



80092

Be with Me Lord

Michael Joncas

SATB

Organ, Guitar, Flute, Oboe

The attached sheet music is copyrighted material and is protected under United States and international copyright laws. A written license is required before reproducing any copyrighted material in any format. A separate purchase is required for each copy of this sheet music. An OCP receipt serves as verification of purchase and limited permission to photocopy/print the stated number of copies.

Be With Me, Lord

Psalm 91:15, 1-2, 10-16

Michael Joncas
Organ Accompaniment by Craig S. Kingsbury

INTRO: (♩ = ca. 108)

Organ

REFRAIN: 1st time: Cantor; Each time thereafter: All

p unison

Be with me, Lord; be with me,

Lord, when I am in trou-ble and need.

© 1981, 1982, Jan Michael Joncas Trust. Published by OCP, 5536 NE Hassalo, Portland, OR 97213. All rights reserved.

VERSE 1: Cantor

p

1. You who dwell in the shel - ter of God, Most High, who a -

p

Detailed description: This system contains the first two measures of the piece. The vocal line begins with a treble clef, a key signature of one flat (B-flat), and a dynamic marking of *p*. The lyrics are "1. You who dwell in the shel - ter of God, Most High, who a -". The piano accompaniment consists of two staves (treble and bass clefs) with a *p* dynamic marking. The music is in a 4/4 time signature.

cresc. ----- *mp*

1. bide in Al-might - y's shade, say to the Lord: "My

cresc. ----- *mp*

Detailed description: This system contains the next two measures. The vocal line continues with the lyrics "1. bide in Al-might - y's shade, say to the Lord: "My". There are dynamic markings of *cresc.* (crescendo) and *mp* (mezzo-piano). The piano accompaniment continues with similar dynamics and includes a fermata over the final note of the second measure.

cresc. ----- *mf* ----- *dim.* -----

1. ref - uge, my strong-hold, my God in whom I trust!"

cresc. ----- *mf* ----- *dim.* -----

Detailed description: This system contains the final two measures. The vocal line concludes with the lyrics "1. ref - uge, my strong-hold, my God in whom I trust!". Dynamic markings include *cresc.*, *mf* (mezzo-forte), and *dim.* (diminuendo). The piano accompaniment also features these dynamics and ends with a fermata over the final note of the second measure.

REFRAIN: All:
Soprano/Melody

mp

Be with me, Lord; be with me, Lord, — when

Tenor

Bass *mp*

This system contains the first two measures of the refrain. It features three vocal staves: Alto (top), Tenor (middle), and Bass (bottom). The piano accompaniment is shown in two staves (treble and bass clef) below the vocal parts. The music is in a key with one flat (B-flat major or D minor) and a common time signature. The lyrics are: "Be with me, Lord; be with me, Lord, — when".

mp

This system shows the piano accompaniment for the first two measures of the refrain. It consists of two staves: a treble clef staff and a bass clef staff. The music is in a key with one flat and common time. The piano part provides harmonic support for the vocal lines.

I am in trou - ble and need.

This system contains the next two measures of the refrain. It features the same three vocal staves (Alto, Tenor, Bass) and piano accompaniment (treble and bass clef). The lyrics are: "I am in trou - ble and need." The music concludes with a double bar line.

This system shows the piano accompaniment for the second system of the refrain. It consists of two staves: a treble clef staff and a bass clef staff. The music is in a key with one flat and common time. The piano part provides harmonic support for the vocal lines.

VERSE 2: Cantor

p

2. E - vil shall nev - er be - fall you, _____ nor af - flic - tion come

p

cresc. *mp*

2. near to your tent. _____ Un - to his an - gels he's

cresc. *mp*

cresc. *mf* *dim.*

2. giv - en com - mand to guard you in all your ways. _____

cresc. *mf* *dim.*

REFRAIN: All

Soprano/Melody

mp

Alto

Be with me, Lord; be with me, Lord, when

Tenor

Bass *mp*

mp

I am in trou - ble and need.

VERSE 3: Cantor, Altos & Tenors

Cantor *mp*

3. On their hands the an - gels will bear you up, lest you dash your

Alto *mp*

3. On their hands the an - gels will bear you up, lest you dash your

Tenor *mp*

cresc. *mf*

3. foot 'gainst a stone. _____ Li - on or vi - per might

cresc. *mf*

3. foot 'gainst a stone. _____ Li - on or vi - per might

cresc. *mf*

cresc. *f* *dim.*

3. strike _ at your life, but you will not come _ to harm. _____

cresc. *f* *dim.*

3. strike _ at your life, but you will not come _ to harm. _____

cresc. *f* *dim.*

cresc. *f* *dim.*

REFRAIN: All

mf

Be with me, Lord; be with me, Lord, when

mf

Soprano Be with me, Lord,

Alto Be with me, Lord; be with me, Lord, when _

Tenor *mf*

Bass Be _ with _ me:

mf

I am in trou - ble and need. _____

I am in trou - ble and need. _____

I am in trou - ble and need. _____

VERSE 4:

Soprano

mf

4. Cling to the Lord and he'll sure - ly de - liv - er you;

Alto

Tenor

Bass *mf*

mf

Melody

cresc...... *f*

4. he rais-es up all who call on his name. He will bring joy to your

cresc...... *f*

This system contains the first two staves of music. The top staff is the vocal melody, and the bottom staff is the piano accompaniment. Both are in a key with one flat (B-flat major or D minor). The melody begins with a half note G4, followed by quarter notes A4, Bb4, C5, D5, E5, and F5. The piano accompaniment consists of a steady eighth-note bass line in the left hand and a more active line in the right hand. Dynamics include a crescendo leading to a forte (f) section.

dim......

4. hearts ___ and _ bless you with peace in all your days. _____

dim......

dim......

This system contains the next two staves of music. The top staff is the vocal melody, and the bottom staff is the piano accompaniment. The melody continues with a half note G4, followed by quarter notes F5, E5, D5, C5, Bb4, and A4. The piano accompaniment continues with similar rhythmic patterns. Dynamics include a decrescendo leading to a dimesso (dim.) section.

FINAL REFRAIN: All

mf unison

Be with me, Lord; be with me, Lord, when I am in

trou - ble and need.

p

Fine

rit.

Be With Me, Lord

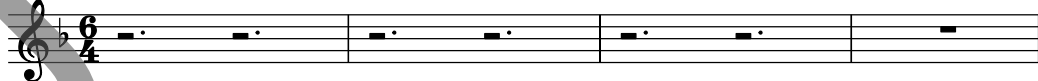
(Guitar/Vocal)

Psalms 91:15, 1-2, 10-16

Michael Joncas

INTRO: (♩ = ca. 108)

Capo 1: (E) (A) (F#m) (B7) (C#m) (Am) (E)
F Bb Gm C7 Dm Bbm F



REFRAIN: 1st time: Cantor; Each time thereafter: All

(E) (A) (F#m) (B7) (C#m) (Am) 1 (E)
p F Bb Gm C7 Dm Bbm F D.S.

Be with me, Lord; be with me, Lord, when I am in trou-ble and need. ____

2-5 (E) to Verses Final (E) (A) (F#m) (B7) (C#m) (Am) (E)
F F Bb Gm C7 Dm Bbm rit. F Fine

need. ____ need. ____

VERSE 1:

(E) (Am6) (E)
p F Bbm6 F

1. You who dwell in the shel-ter of God, Most High, who a-bide in Al-

(Am6) (F) (F#°)
Bbm6 Gb G°
cresc. mp

1. might - y's shade, ____ say to the Lord: ____ "My

(Em) (C) (Am) (F#°) (B7sus4) (B7)
Fm Db Bbm G° Csus4 C7
cresc. mf dim. D.S.

1. ref - uge, my strong - hold, my God, in whom I trust!" ____

VERSE 2: Cantor

(E) (Am6) (E)
p F Bbm6 F

2. E - vil shall nev - er be - fall you, ____ nor af - flic - tion come

(Am6) (F) (F#°)
Bbm6 Gb G°
cresc.

2. near to your tent. _____ Un - to his an - gels he's

(Em) (C) (Am) (F#°) (B7sus4) (B7)
Fm Db Bbm G° C7sus4 C7
cresc. *mf* *dim.* *D.S.*

2. giv - en com-mand to guard you in all your ways. _____

VERSE 3:

(E) (Am6) (E)
F Bbm6 F
mp

3. On their hands the an - gels will bear you up, lest you dash your

(Am6) (F) (F#°)
Bbm6 Gb G°
cresc. *mf*

3. foot 'gainst a stone. _____ Li - on or vi - per might

(Em) (C) (Am) (F#°) (B7sus4) (B7)
Fm Db Bbm G° C7sus4 C7
cresc. *f dim.* *D.S.*

3. strike _____ at your life, but you will not come _____ to harm. _____

VERSE 4:

(Am) (D) (Gmaj7) (C) (F)
Bbm Eb Abmaj7 Db Gb
mf

4. Cling to the Lord and he'll sure - ly de - liv - er you; he rais - es

(Dm7) (E) (E7) (Am) (D)
Eb7 F F7 Bbm Eb
cresc. *f*

4. up all who call on his name. He will bring joy to your

(Gmaj7) (C) (Am) (F#°) (B7sus4) (B7)
Abmaj7 Db Bbm G° C7sus4 C7
dim. *D.S.*

4. hearts and bless you with peace in all your days. _____

Be With Me, Lord

FLUTE

Michael Joncas

INTRO: *Lyrical* (♩ = ca. 108)

REFRAIN: *Tacet*

VERSE 1:

REFRAIN: *Tacet*

VERSE 2: *Tacet*

REFRAIN:

VERSE 3: *Tacet*

REFRAIN: *Tacet*

VERSE 4: *Tacet*

FINAL REFRAIN:

Be With Me, Lord

OBOE

Michael Joncas

INTRO: *Lyrical* (♩ = ca. 108)

REFRAIN: Tacet

VERSE 1: Tacet

REFRAIN: Tacet

VERSE 2:

REFRAIN:

VERSE 3: Tacet

REFRAIN: Tacet

VERSE 4: Tacet

FINAL REFRAIN:

BE WITH ME, LORD

Michael Joncas

Refrain
Be with me, Lord; be with me, Lord, when I am in trouble and

Verse 1
1. You who dwell in the shelter of God, Most High, who a-

1. bide in Al-might - y's shade, say to the Lord: "My

1. re - fuge, my strong-hold, my God in whom I trust."

Verse 2
2. E - vil shall nev - er be - fall you,

2. flic-tion come near to your tent. Un-to his an-gels he's

2. giv - en com-mand to guard you all in your ways.

Text: Psalm 91:15, 1-2, 10-16. Text and music © 1981, 1992, Jan Michael Joncas Trust. Published by OCP, 5536 NE Hassalo, Portland, OR 97213. All rights reserved.

BE WITH ME, LORD (continued)

Verse 3
3. On their hands the an - gels will bear you up, lest you

3. dash your foot 'gainst a stone. Li - on or vi - per might

3. strike at your life, but you will not come to harm. to Refrain

Verse 4
4. Cling to the Lord and he'll sure - ly de - liv - er you; he rais - es

4. up all who call on his name. He will bring joy to your

4. hearts and bless you with peace in all your days. to Refrain

For reprint permissions, please visit OneLicense.net or contact us at 1-800-663-1501.