

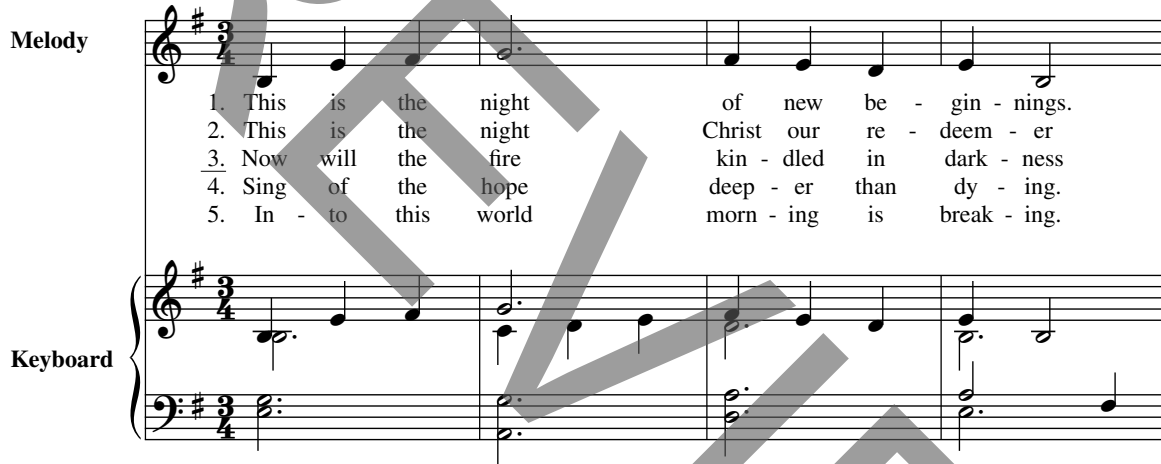
## Christ, Be Our Light (Easter Vigil text)

Assembly, Unison Choir, Descant, Keyboard, Guitar, Flute, and B♭ Trumpet

Bernadette Farrell

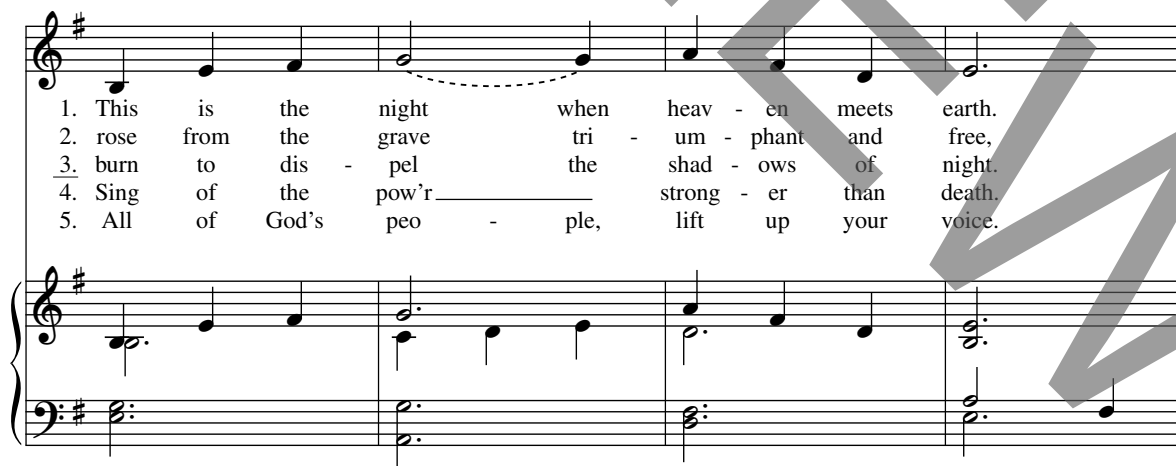
\*VERSES (♩ = ca. 132)

Melody



1. This is the night of new be - gin - nings.  
2. This is the night Christ our re - deem - er  
3. Now will the fire kin - dled in dark - ness  
4. Sing of the hope deep - er than dy - ing.  
5. In - to this world morn - ing is break - ing.

Keyboard



1. This is the night when heav - en meets earth.  
2. rose from the grave tri - um - phant and free,  
3. burn to dis - pel the shad - ows of night.  
4. Sing of the pow'r strong - er than death.  
5. All of God's peo - ple, lift up your voice.

© 1993, 2000, Bernadette Farrell. Published by OCP Publications, 5536 NE Hassalo, Portland, OR 97213. All rights reserved.

\*Play first four measures as Intro.

1. This is the night \_\_\_\_\_ filled with God's glo - ry,  
 2. leav - ing the tomb of e - vil and dark - ness,  
 3. Star of the morn - ing, Je - sus our Sav - ior,  
 4. Sing of the love \_\_\_\_\_ end - less as heav - en,  
 5. Cry out with joy, \_\_\_\_\_ tell out the sto - ry,

1. prom - ise of our new birth! \_\_\_\_\_  
 2. emp - ty for all to see. \_\_\_\_\_  
 3. you are the world's true light! \_\_\_\_\_  
 4. dawn - ing through - out the earth. \_\_\_\_\_  
 5. all of the earth re - joice. \_\_\_\_\_

**REFRAIN****Descant**

Christ, be our light! Shine out

**Melody**

Christ, be our light! Shine in our hearts.

through the dark, shine! Christ,

Shine through the dark - ness. Christ,

This system contains the first two vocal staves and the piano accompaniment. The first vocal staff has lyrics: "through the dark, shine! Christ,". The second vocal staff has lyrics: "Shine through the dark - ness. Christ,". The piano accompaniment is in G major and 4/4 time, with a steady bass line and chords in the right hand.

be our light! Shine in your church

be our light! Shine in your church

This system contains the next two vocal staves and the piano accompaniment. Both vocal staves have lyrics: "be our light! Shine in your church". The piano accompaniment continues with similar harmonic support.

gath - ered to - day.

gath - ered to - day.

gath - ered to - day.

This system contains the final three vocal staves and the piano accompaniment. Each vocal staff has lyrics: "gath - ered to - day.". The piano accompaniment concludes with a final chord. Above the piano part, there are markings: "1-4", "D.C.", and "Final" with a fermata symbol.

# Christ, Be Our Light

(Easter Vigil text)

(Guitar/Vocal)

Bernadette Farrell

## INTRO (♩ = ca. 132)

Em Am7 Bm7 Esus4

## VERSES

Em Am7 Bm7 Esus4

1. This is the night of new be - gin - nings.  
 2. This is the night Christ our re - deem - er  
 3. Now will the fire kin - dled in dark - ness  
 4. Sing of the hope deep - er than dy - ing.  
 5. In - to this world morn - ing is break - ing.

Em Am7 Bm7 Esus4

1. This is the night when heav - en meets earth.  
 2. rose from the grave tri - um - phant and free,  
 3. burn to dis - pel the shad - ows of night.  
 4. Sing of the pow'r strong - er than death.  
 5. All of God's peo - ple, lift up your voice.

Em Am7 D G

1. This is the night filled with God's glo - ry,  
 2. leav - ing the tomb of e - vil and dark - ness,  
 3. Star of the morn - ing, Je - sus our Sav - ior,  
 4. Sing of the love end - less as heav - en,  
 5. Cry out with joy, tell out the sto - ry,

C Am Dsus4 D

1. prom - ise of our new birth! \_\_\_\_\_  
 2. emp - ty for all to see. \_\_\_\_\_  
 3. you are the world's true light! \_\_\_\_\_  
 4. dawn - ing through - out the earth. \_\_\_\_\_  
 5. all of the earth re - joice. \_\_\_\_\_

REFRAIN

G C G Em Bm

Melody

Christ, be our light! Shine in our hearts.

Descant

Christ, be our light! Shine out

Em Am7 D G

Shine through the dark - ness. Christ,

through the dark, shine! Christ,

Dsus4 D Em Em/D C

be our light! Shine in your church

be our light! Shine in your church

Am7 D G Am/G

gath - ered to - day.

1-4 G Final G

D.S.

gath - ered to - day.

1-4 D.S. Final

# Christ, Be Our Light

FLUTE

Bernadette Farrell

INTRO (♩ = ca. 132) 4 VERSES 1-5

Musical notation for the Intro and Verses 1-5. It consists of two staves of music in G major and 3/4 time. The first staff begins with a four-measure rest, followed by a melodic line with a slur. The second staff continues the melody with a slur and ends with a quarter rest.

REFRAIN

Musical notation for the Refrain. It consists of two staves of music in G major and 3/4 time. The first staff contains the main melodic phrase with a slur. The second staff continues the phrase with a slur and ends with a fermata and the instruction "D.S. (Fine)".

# Christ, Be Our Light

B $\flat$  TRUMPET

Bernadette Farrell  
Arranged by Craig Kingsbury

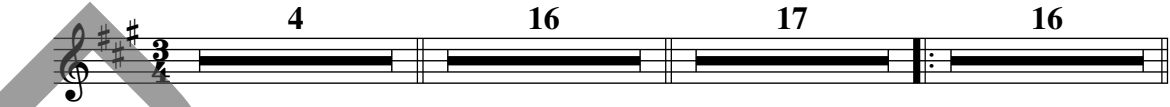
INTRO ( $\text{♩} = \text{ca. } 132$ )

VERSE 1

REFRAIN

VERSES 2, 3, 4

4 16 17 16



REFRAIN

*mf*



(repeat twice)

VERSE 5

*mp legato*

In - to this...

*mf*



REFRAIN

*f*



## Assembly Edition

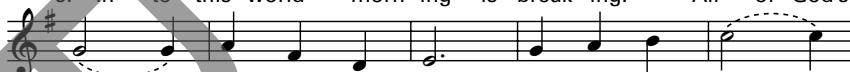
### CHRIST, BE OUR LIGHT (Easter Vigil text)

Bernadette Farrell

## Verses



1. This is the night of new be - gin - nings. This is the
2. This is the night Christ our re - deem - er rose from the
3. Now will the fire kin - dled in dark - ness burn to dis -
4. Sing of the hope deep - er than dy - ing. Sing of the
5. In - to this world morn - ing is break - ing. All of God's



1. night when heav - en meets earth. This is the night \_\_\_\_\_
2. grave tri - um - phant and free, leav - ing the tomb of
3. pel the shad - ows of night. Star of the morn - ing,
4. pow'r \_\_\_\_\_ strong - er than death. Sing of the love \_\_\_\_\_
5. peo - ple, lift up your voice. Cry out with joy, \_\_\_\_\_



1. filled with God's glo - ry, prom - ise of our new birth!
2. e - vil and dark - ness, emp - ty for all to see.
3. Je - sus our Sav - ior, you are the world's true light!
4. end - less as heav - en, dawn - ing through - out the earth.
5. tell out the sto - ry, all of the earth re - joice.

## Refrain



Christ, be our light! Shine in our hearts.



Shine through the dark - ness. Christ, be our light!



Shine in your church gath - ered to - day.

© 1993, 2000, Bernadette Farrell. Published by OCP Publications, 5536 NE Hassalo, Portland, OR 97213.  
All rights reserved.

For reprint permissions, please visit [OneLicense.net](http://OneLicense.net) or contact us at 1-800-663-1501.