

YOU ARE NEAR

Dan Schutte
Arranged by Christopher Walker
Refrain solo instrument part by Randall DeBruyn,
adapted by Christopher Walker

Based on Psalm 139

INTRO Peacefully (♩ = ca. 80)

Solo Instrument

Cello

Keyboard

p

G Cadd9 G

REFRAIN

p

Soprano (Descant)

(there.) I know you are near, you are near;

Soprano/Alto (Melody)

Yah - weh, I know you are near, stand-ing

G Cadd9 G D/F#

© 1971, 1992, 2000, OCP, 5536 NE Hassalo, Portland, OR 97213. All rights reserved.

al - ways stand - ing at my side, at my side.

al - ways at my side. You

Cadd9 G/B Am7 Am7/G G D/F#

From the foe, and you lead me in ways ev - er -

guard me from the foe, and you lead me in ways ev - er -

Cadd9 Bm C Am7 Am7/G

1-4 to Verses Final rit. Fine

1-4 to Verses Final rit. Fine

1-4 to Verses Final rit. Fine

last-ing. last-ing.

1-4 to Verses Final rit. Fine

last-ing. last-ing.

1-4 G to Verses Final G rit. Fine

VERSES

mp

mp

S (Descant)

A (Harm.) Ah, ah,

S (Melody)

1. Lord, you have searched my heart, and you know when I
 2. Where can I run from your love? If I climb to the
 3. You know my heart and its ways, you who formed me be -
 4. Mar - vel - ous to me are your works; how pro - found are your

G Cadd9 D/F# Em

cresc.

cresc.

cresc.

you are there. Ah,

cresc.

1. sit and when I stand. Your hand is up - on me, pro -
 2. heav - ens you are there; if I fly to the sun - rise or
 3. fore I was born, in the se - cret of dark - ness be -
 4. thoughts, my Lord. E - ven if I could count them, they

Am Bm Em

cresc.

D.S.

D.S.

D.S.

ah, I'd find you

D.S.

1. tect - ing me from death, keep - ing me from harm.
 2. sail be - yond the sea, still I'd find you there.
 3. fore I saw the sun, in my moth - er's womb.
 4. num - ber as the stars; you would still be there.

Am Bm Am7 Am7/G D/F#

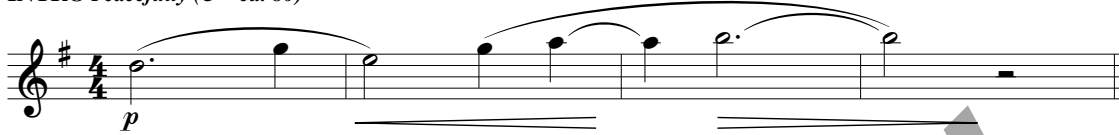
D.S.

YOU ARE NEAR

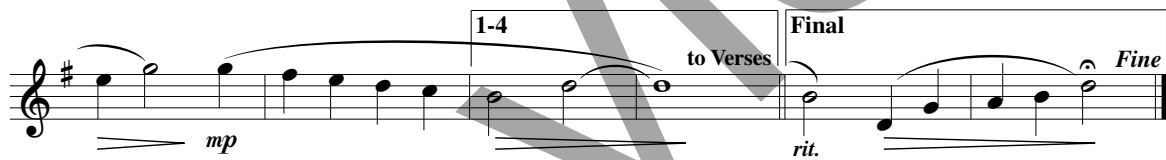
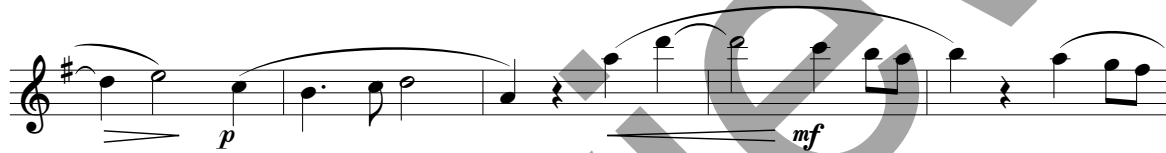
Dan Schutte
 Refrain by Randall DeBruyn,
 adapted by Christopher Walker

SOLO INSTRUMENT in C

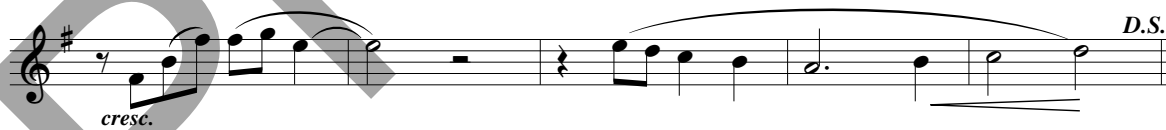
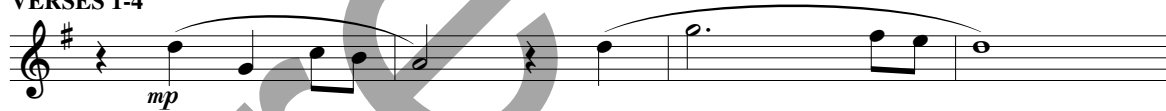
INTRO *Peacefully* (♩ = ca. 80)



REFRAIN



VERSES 1-4



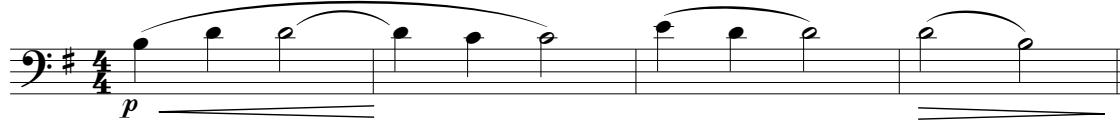
© 1971, 1992, 2000, OCP, 5536 NE Hassalo, Portland, OR 97213. All rights reserved.

YOU ARE NEAR

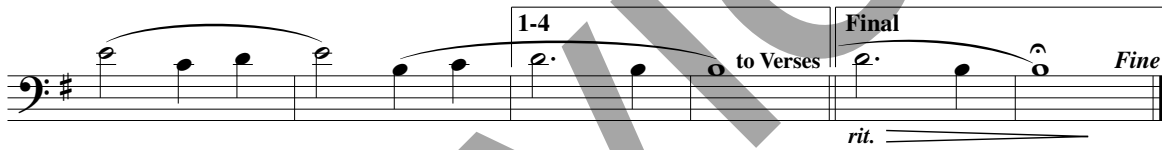
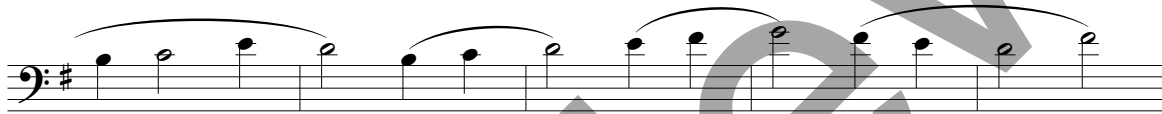
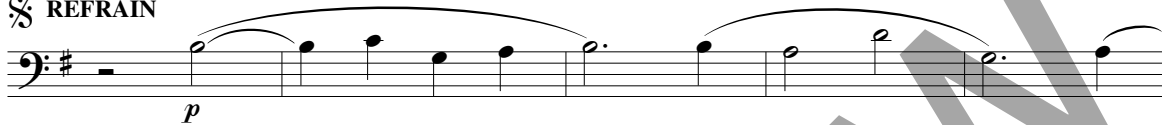
CELLO

Dan Schutte
Arranged by Christopher Walker

INTRO *Peacefully* (♩ = ca. 80)



REFRAIN



VERSES 1-4



© 1971, 2000, OCP, 5536 NE Hassalo, Portland, OR 97213. All rights reserved.

Assembly Edition

YOU ARE NEAR

Dan Schutte

Refrain

Yah-weh, I know you are near, stand-ing al-ways at my side. You
guard me from the foe, and you lead me in ways ev-er-last-ing.

Verses

1. Lord, — you have searched my heart, and you know when I
2. Where — can I run from your love? If I climb to the
3. You — know my heart and its ways, you who formed me be -
4. Mar-vel-ous to me are your works; how pro - found are your

1. sit and when I stand. Your — hand is up - on me pro -
2. heav-ens you are there; if I fly to the sun - rise or
3. fore I was born, in the se - cret of dark - ness be -
4. thoughts, my — Lord. E - ven if I could count them, they

to Refrain

1. tect-ing me from death, keep - ing me from harm.
2. sail be-yond the sea, still I'd find you there.
3. fore I saw the sun, in my moth-er's womb.
4. num-ber as the stars, you would still be there.

Text based on Psalm 139. Text and music © 1971, OCP, 5536 NE Hassalo, Portland, OR 97213. All rights reserved.

For reprint permissions, please visit OneLicense.net or contact us at 1-800-663-1501.

PERFORMANCE NOTES

Dan Schutte's beautiful setting of Psalm 139, *You Are Near*, is probably the most widely sung song to have crossed into every Christian denomination. This arrangement enriches the melody with new instrumental and choral parts. It has been recorded on the album "Sisters in Song Rejoice!" As well as a piano, we used a synthesizer pad to support the harmony. A suggested performance outline is below, but you may make your own if you wish.

INTRODUCTION	With flute and cello
REFRAIN	Melody
VERSE 1	Melody
REFRAIN	Melody & flute
VERSE 2	Melody with vocal descant & harmony
REFRAIN	Melody with vocal descant & cello
VERSE 3	Melody
REFRAIN	Melody with vocal descant, flute & cello
VERSE 4	Melody & instruments
REFRAIN	Solo & cello with flute coming in for the final measure and a half

— Christopher Walker