

Unless the Lord

Harry Hagan, OSB

Timothy R. Smith

INTRO in 1 (♩. = ca. 46)

Keyboard *mp*

**VERSES 1, 2: Verse 1, men unison;
Verse 2, S/A**

mp

1. Un - less the us Lord shall build the
(2. You) made us stew - ards of the

Text © 1997, St. Meinrad Archabbey. Music © 2003, Timothy R. Smith.
Published by OCP Publications, 5536 NE Hassalo, Portland, OR 97213. All rights reserved.

1. house, The build - ers and build in vain.
2. earth To bless and mul - ti - ply,

Ab Db/Ab Eb/Ab

1. — And they who watch shall sure - ly fail Lest
2. — And ev - 'ry - thing you made is good, As

Ab Db/F Ab/Eb

1. God their watch sus - tain. In vain they
2. we must tes - ti - fy: How won - drous -

Db Ebsus4 Eb Ab Ab/Db

cresc. *mf*

1. rise _____ and la - bor long To eat their bread of
 2. ly _____ you formed us all, An im - age of your

E \flat B \flat m F m D \flat maj7 E \flat

1. pain, _____ For, while they slum - ber, God pours
 2. face! _____ How gra - cious - ly you bless us

mp

Ab D \flat /A \flat

dim. mp

1. down Good gifts on them like rain. _____ 2. You
 2. still With your sur - pris - ing

Ab D \flat E \flat sus4 E \flat 1 A \flat

2
2. grace!

2
Ab

A \flat /D \flat

E \flat

cresc.

mf

This section contains the piano introduction. It features a treble clef staff with a melodic line and a grand staff (treble and bass clefs) with a more active accompaniment. A first ending bracket labeled '2' spans the first two measures. A second ending bracket labeled '2' spans the last two measures. Chord symbols Ab, A \flat /D \flat , and E \flat are placed above the piano staff. Dynamics include *cresc.* and *mf*.

Soprano *mp*

Alto Oo

Tenor

Bass *mp*

B \flat m F m D \flat maj7 E \flat A \flat

dim. *mp*

This section contains the vocal and piano accompaniment for the first part of the piece. It includes staves for Soprano, Alto, Tenor, and Bass. The piano accompaniment is in a grand staff. Chord symbols B \flat m, F m, D \flat maj7, E \flat , and A \flat are placed above the piano staff. Dynamics include *mp*, *dim.*, and *mp*.

VERSE 3

mf

3. Great God and all cre - a - tion's Lord, — Un -

unis.

mf

D \flat /A \flat A \flat

mf

This section contains the lyrics and piano accompaniment for Verse 3. It includes a vocal staff and a piano grand staff. The lyrics are: "3. Great God and all cre - a - tion's Lord, — Un -". A dynamic marking *mf* is present above the vocal staff. A dynamic marking *unis.* is present above the piano staff. Chord symbols D \flat /A \flat and A \flat are placed above the piano staff. A dynamic marking *mf* is present below the piano staff.

3. fath - omed Depth and Height, O Mys - ter -

Db/Ab Eb/Ab Ab

3. y be - yond our grasp, O Love be - yond our

Db/F Ab/Eb Db Ebsus4 Eb

3. might: We praise you, Fa - ther,

Ab Ab/Db Eb

3. Source _____ of _____ Life, Re-vealed in Christ your

Bbm Fm Db Eb

3. Son, _____ With God the Spir - it, Font of

unis.

Ab Db/Ab

3. Love, _____ E - ter - nal Three - in - One. _____

Ab Db Ebsus4 Eb Ab

dim.

mp unis.

Oo

mp

mp

Db/Ab Ab Db/Ab

Oo

Ab Db/Ab Eb/Ab

Oo _____ Oh _____

Ab Db/F Ab/Eb Db

This system contains the first four measures of the piece. It features a vocal line with lyrics "Oo" and "Oh", a bass line, and a piano accompaniment. The piano part includes a treble clef with chords and a bass clef with a melodic line. Chords are labeled as Ab, Db/F, Ab/Eb, and Db.

rit.

rit.

Ebsus4 Eb Ab

rit.

This system contains the next four measures. It features a vocal line with a slur over the notes, a bass line with a slur, and a piano accompaniment. The piano part includes a treble clef with chords and a bass clef with a melodic line. Chords are labeled as Ebsus4, Eb, and Ab. The word "rit." is written above the vocal line and below the piano accompaniment.

Unless the Lord

(Guitar/Vocal)

Harry Hagan, OSB

Timothy R. Smith

INTRO in 1 (♩. = ca. 46)

Capo 1: (G) Ab (C/G) Db/Ab (G) Ab (C) Db

VERSES 1, 2

(Dsus4) Ebsus4 (D) Eb (G) Ab (G) Ab (C/G) Db/Ab

1. Un - less the Lord shall build the
 (2. You) made us stew - ards of the

(G) Ab (C/G) Db/Ab (D/G) Eb/Ab (G) Ab

1. house, The build - ers build in vain. And they who
 2. earth To bless and mul - ti - ply, And ev - 'ry -

(C/E) Db/F (G/D) Ab/Eb (C) Db (Dsus4) Ebsus4 (D) Eb (G) Ab *cresc.*

1. watch shall sure - ly fail Lest God their watch sus - tain.
 2. thing you made is good, As we must tes - ti - fy:

mf (G/C) Ab/Db (D) Eb (Am) Bbm (Em) Fm

1. In vain they rise and la - bor long To
 2. How won - drous - ly you formed us all, An

(Cmaj7) Dbmaj7 (D) Eb (G) Ab *dim.* *mp*

1. eat their bread of pain, For, while they slum - ber,
 2. im - age of your face! How gra - cious - ly you

(C/G) Db/Ab (G) Ab (C) Db (Dsus4) Ebsus4 (D) Eb 1 (G) Ab

1. God pours down Good gifts on them like rain. 2. You
 2. bless us still With your sur - pris - ing

Text © 1997, St. Meinrad Archabbey. Music © 2003, Timothy R. Smith.
 Published by OCP Publications, 5536 NE Hassalo, Portland, OR 97213. All rights reserved.

2
 (G) (G/C) (D) (Am) (Em) (Cmaj7) (D) (G)
 Ab Ab/Db Eb Bbm Fm Dbmaj7 Eb Ab
mp
 2. grace! _____ Oo _____

VERSE 3

mp
 (C/G) (G) (C/G)
 Db/Ab Ab Db/Ab
 3. Great God and all cre - a - tion's Lord, Un - fath - omed

(D/G) (G) (C/E)
 Eb/Ab Ab Db/F
 3. Depth and Height, _____ O Mys - ter - y be - yond our

(G/D) (C) (Dsus4) (D) (G) (G/C)
 Ab/Eb Db Ebsus4 Eb Ab Ab/Db
 3. grasp, O Love be - yond our might: _____ We _____ praise you,

(D) (Am) (Em) (C) (D) (G)
 Eb Bbm Fm Db Eb Ab
 3. Fa - ther, Source _____ of _____ Life, Re - vealed in Christ your Son, _____

(C/G) (G) (C)
 Db/Ab Ab Db
 3. _____ With God the Spir - it, Font of Love, E - ter - nal

(Dsus4) (D) (G) (C/G) (G)
 Ebsus4 Eb Ab Db/Ab Ab
dim. *mp*
 3. Three - in - One. _____ Oo _____

(C/G) (G) (C/G) (D/G) (G)
 Db/Ab Ab Db/Ab Eb/Ab Ab
 _____ Oo _____ Oo _____

(C/E) (G/D) (C) (Dsus4) (D) (G)
 Db/F Ab/Eb , Db Ebsus4 Eb Ab
rit.
 _____ Oh _____

Assembly Edition

UNLESS THE LORD

Timothy R. Smith



1. Un - less the Lord shall build the house, The
 2. You made us stew - ards of the earth To
 3. Great God and all cre - a - tion's Lord, Un -



1. build - ers build in vain. And they who
 2. bless and mul - ti - ply, And ev - 'ry -
 3. fath - omed Depth and Height, O Mys - ter -



1. watch shall sure - ly fail Lest God their watch sus -
 2. thing you made is good, As we must tes - ti -
 3. y be - yond our grasp, O Love be - yond our



1. tain. In vain they rise and
 2. fy: How won - drous - ly you
 3. might: We praise you, Fa - ther,



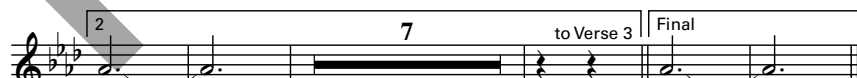
1. la - bor long To eat their bread of
 2. formed us all, An im - age of your
 3. Source of Life, Re - vealed in Christ your



1. pain, For, while they slum - ber, God pours
 2. face! How gra - cious - ly you bless us
 3. Son, With God the Spir - it, Font of



1. down Good gifts on them like rain.
 2. still With your sur - pris - ing
 3. Love, E - ter - nal Three - in -



2. grace! 3. One.

Text: CMD; Harry Hagan, OSB, © 1997, St. Meinrad Archabbey. Music © 2003, Timothy R. Smith.
 Published by OCP Publications, 5536 NE Hassalo, Portland, OR 97213. All rights reserved.

For reprint permissions, please visit OneLicense.net or contact us at 1-800-663-1501.