

20189
88231 (PDF)

Bathed in the Waters of Life
SATB Choir, Keyboard, Guitar,
Flute, Oboe, Assembly

Carey Landry



CHORAL SERIES

Bathed in the Waters of Life

Carey Landry

Preview

FROM THE COLLECTION
O Healing Light of Christ
Choral Songbook #10861
CD #10863 | MP3 Album #99165



Bathed in the Waters of Life

Carey Landry
Arranged by David Wey

INTRO (♩ = ca. 124)

Keyboard

D Dsus4 A/D

Dsus4 D A/D G/D

Gm/D Em7 F#m7 Bm C

© 1998, Carey Landry. Published by OCP, 5536 NE Hassalo, Portland, OR 97213. All rights reserved.

VERSE 1

Soprano/Alto

1. Bathed in the wa-ters of life, and filled with the Spir - it;

D A/D G/D D

Tenor/Bass

1. bathed in the wa-ters of life, Je - sus went forth.

A/D Em Asus4 A

S/A

1. Bathed in the wa-ters of life, we hear Christ call-ing.

D F#m7 G A/G D/F# D

All

1. We are God's peo - ple, bathed in the wa-ters of life.

G A/G D/F# Bm Em A7 D

1. —

Dsus4 D G/A A G/A A

VERSE 2

S/A

2. Bathed in the wa-ters of life, we are God's chil-dren.

T/B

D A/D G/D D

2. Bathed in the wa-ters of life, we are the Church.

we — are the

A/D Em Asus4 A

2. Bathed in the wa-ters of life, we walk to - geth-er.

Church.

D F#m7 G A/G D/F# D

2. We are God's peo - ple, bathed in the wa-ters of life.

G A/G D/F# Bm Em A7 D

Detailed description: This system contains the vocal melody and piano accompaniment for the first part of the song. The vocal line is in treble clef with a key signature of one sharp (F#) and a 4/4 time signature. The lyrics are "2. We are God's peo - ple, bathed in the wa-ters of life." The piano accompaniment is in bass clef with the same key signature and time signature. Above the piano staff, the following chords are indicated: G, A/G, D/F#, Bm, Em, A7, and D.

INTERLUDE

C/D D C/D D

Detailed description: This section is an interlude for the piano. It consists of two staves (treble and bass clef) in the key of D major (one sharp) and 4/4 time. The treble staff features a rhythmic pattern of eighth and sixteenth notes, while the bass staff provides a simple harmonic accompaniment. The chords indicated above the staff are C/D, D, C/D, and D.

Bb/C C Bb/C C Asus4 A

Detailed description: This section continues the interlude. It consists of two staves (treble and bass clef) in the key of D major (one sharp) and 4/4 time. The treble staff features a rhythmic pattern of eighth and sixteenth notes, while the bass staff provides a simple harmonic accompaniment. The chords indicated above the staff are Bb/C, C, Bb/C, C, Asus4, and A.

VERSE 3

S/A

3. Bathed in the wa-ters of life, we work for jus - tice.

T

B

3. Bathed in the wa-ters of life, we work for jus - tice. —

D A/D G/D D

3. Bathed in the wa-ters of life, we tell good news.

3. Bathed in the wa-ters of life, we tell — good —

A/D Em Asus4 A

3. Bathed in the wa-ters of life, we serve with com - pas-sion.

The first system shows a vocal line in treble clef and a piano accompaniment in bass clef. The key signature has two sharps (F# and C#). The vocal line starts with a quarter note G4, followed by eighth notes A4, B4, C5, and a quarter note D5. The piano accompaniment features a steady eighth-note bass line in the left hand and a melody in the right hand.

3. news. Bathed in the wa-ters we serve with com - pas-sion.

D F#m7 G A/G D/F# D

The second system continues the vocal and piano parts. Chord symbols are placed above the piano accompaniment: D, F#m7, G, A/G, D/F#, and D. The piano accompaniment includes a large 'P' watermark.

3. We are God's peo - ple, bathed in the wa-ters of life.

The third system shows the vocal line and piano accompaniment. The vocal line has a quarter note G4, followed by a half note A4, and a quarter note B4. The piano accompaniment continues with the same rhythmic pattern.

G A/G D/F# Bm Em A7 D

The fourth system shows the piano accompaniment with chord symbols: G, A/G, D/F#, Bm, Em, A7, and D. The piano accompaniment includes a large 'P' watermark.

A G Gm7 C

The fifth system shows the piano accompaniment with chord symbols: A, G, Gm7, and C. The piano accompaniment includes a large 'P' watermark.

VERSE 4

4. Bathed in the wa-ters of life, we sing with glad-ness.

F C/F B \flat Csus4 C7 F

4. Bathed in the wa-ters of life, we pray as one.

C/F Gm Csus4 C

4. Bathed in the wa-ters of life, we let our light shine.

we let our light shine.

F Am7 B \flat C7 F F/A

This system contains the first two lines of music. The top line is the vocal melody with lyrics. The bottom line is the piano accompaniment. The key signature has one flat (Bb). The first line of music is in 4/4 time. The lyrics are: "4. Bathed in the wa-ters of life, we let our light shine." The second line of music continues the melody and accompaniment with the lyrics: "we let our light shine." The piano part features chords: F, Am7, Bb, C7, F, and F/A.

4. We are God's peo - ple, — bathed in the wa-ters of life.

B \flat C/B \flat F/A Dm Gm C7 F

This system contains the second two lines of music. The top line is the vocal melody with lyrics. The bottom line is the piano accompaniment. The key signature has one flat (Bb). The first line of music is in 4/4 time. The lyrics are: "4. We are God's peo - ple, — bathed in the wa-ters of life." The second line of music continues the melody and accompaniment. The piano part features chords: Bb, C/Bb, F/A, Dm, Gm, C7, and F.

4. We are God's peo - ple. ____ We are God's peo - ple, ____

B \flat Am Dm B \flat C/B \flat C C/D Dm

4. bathed in the wa - ters of life. ____

4. bathed in the wa - ters of life. ____

Gm Gm/C C7 F Fsus4

F Fsus4 F Fsus4 F

rit.

Bathed in the Waters of Life

(Guitar/Vocal)

Carey Landry
Arranged by David Wey

INTRO (♩ = ca. 124)

D Dsus4 A/D Dsus4 D A/D

G/D Gm/D Em7 F#m7 Bm C

VERSES 1-3

D A/D G/D D

1. Bathed in the wa-ters of life, and filled with the Spir - it;
2. Bathed in the wa-ters of life, we are God's chil - dren.
3. Bathed in the wa-ters of life, we work for jus - tice.

A/D Em Asus4 A

1. bathed in the wa-ters of life, Je - sus went forth.
2. Bathed in the wa-ters of life, we are the Church.
3. Bathed in the wa-ters of life, we tell good news.

D F#m7 G A/G D/F# D

1. Bathed in the wa-ters of life, we hear Christ call - ing.
2. Bathed in the wa-ters of life, we walk to - geth - er.
3. Bathed in the wa-ters of life, we serve with com - pas - sion.

G A/G D/F# Bm Em A7

1-3. We are God's peo - ple, bathed in the wa - ters of

1
D Dsus4 D G/A A G/A A D.S.

1. life.

2 **INTERLUDE**
D C/D D C/D D

2. life.

B \flat /C C B \flat /C C Asus4 A *D.S.*

$\overset{3}{\text{D}}$ A G Gm7 C

3. life.

VERSE 4

F C/F B \flat Csus4 C7 F

4. Bathed in the wa - ters of life, we sing _____ with glad - ness.

C/F Gm Csus4 C

4. Bathed in the wa - ters of life, we pray as one. _____

F Am7 B \flat C7 F F/A

4. Bathed in the wa - ters of life, we let _____ our light shine.

B \flat C/B \flat F/A Dm Gm C7 F

4. We are God's peo - ple, _____ bathed in the wa - ters of life.

B \flat Am Dm B \flat C/B \flat C C/D Dm

4. We are God's peo - ple. _____ We are God's peo - ple, _____

Gm Gm/C C7 F Fsus4

4. bathed in the wa - ters of life. _____

F Fsus4 F Fsus4 *rit.* // F

Bathed in the Waters of Life

Carey Landry

Arranged by David Wey

FLUTE

INTRO (♩ = ca. 124)

5

VERSE 1

7

We are God's peo-ple

VERSE 2

3 11

INTERLUDE

3

VERSE 3

11

We are God's peo-ple

VERSE 4

2

13

bathed in the wa-ters of life _____

rit.

Bathed in the Waters of Life

OBOE

Carey Landry
Arranged by David Wey

INTRO (♩ = ca. 124)

4

Musical notation for the Intro section, starting with a treble clef, key signature of one sharp (F#), and 4/4 time signature. It features a four-measure rest followed by a melodic line of eighth and quarter notes.

VERSE 1

6

2

Musical notation for Verse 1, starting with a six-measure rest followed by a melodic line of eighth and quarter notes. The section concludes with a two-measure rest.

VERSE 2

3

11

INTERLUDE

Musical notation for Verse 2, starting with a three-measure rest followed by a melodic line of eighth and quarter notes. The section concludes with an eleven-measure rest, followed by the Interlude section featuring a melodic line of eighth and quarter notes.

VERSE 3

13

bathed in the wa-ters of life

Musical notation for Verse 3, starting with a thirteen-measure rest followed by a melodic line of eighth and quarter notes. The lyrics "bathed in the wa-ters of life" are written below the notes.

VERSE 4

21

bathed in the wa-ters of life

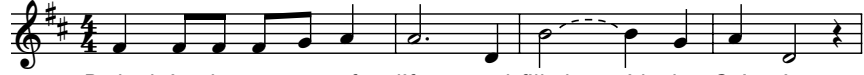
Musical notation for Verse 4, starting with a twenty-one-measure rest followed by a melodic line of eighth and quarter notes. The lyrics "bathed in the wa-ters of life" are written below the notes. The section concludes with a melodic line of eighth and quarter notes.

Assembly Edition

BATHED IN THE WATERS OF LIFE

Carey Landry

Verses



1. Bathed in the wa-ters of life, and filled with the Spir - it;
2. Bathed in the wa-ters of life, we are _____ God's chil - dren.
3. Bathed in the wa-ters of life, we work _____ for jus - tice.
4. Bathed in the wa-ters of life, we sing _____ with glad-ness.



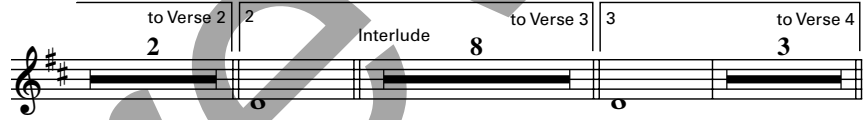
1. bathed in the wa-ters of life, Je - sus went forth.
2. Bathed in the wa-ters of life, we are the Church.
3. Bathed in the wa-ters of life, we tell good news.
4. Bathed in the wa-ters of life, we pray as one.



1. Bathed in the wa-ters of life, we hear _____ Christ call - ing.
2. Bathed in the wa-ters of life, we walk _____ to - geth - er.
3. Bathed in the wa-ters of life, we serve with com - pas - sion.
4. Bathed in the wa-ters of life, we let _____ our light shine.



- 1-4. We are God's peo-ple, bathed in the wa-ters of life.



life. life.

© 1998, Carey Landry. Published by OCP, 5536 NE Hassalo, Portland, OR 97213. All rights reserved.

For reprint permissions, please visit OneLicense.net or contact us at 1-800-663-1501.

