

Make Me a Channel

Edition # 20192-Z2

(Prayer of St. Francis)

(Guitar/Vocal)

Sarah Hart

Based on a prayer ascribed to St. Francis

Vocal arrangement by Scott Soper

INTRO (♩ = ca. 112)

Capo 3: (Dadd9)

Fadd9

(A/C#)

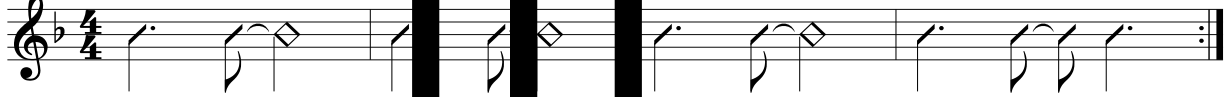
C/E

(Bm7)

Dm7

(A/C#)

C/E



VERSES 1, 2, 4

(D)

F

(Em7/D)

Gm7/F

(D)

F

(Em7/D)

Gm7/F



1. Make me a chan - nel of your peace.
2. Make me a ves - sel of your truth.
4. Make me a mes - sen - ger of love.

(D)

F

(Em7/D)

Gm7/F

(Bm)

Dm

(Bm7/A)

Dm7/C

(G)

Bb



1. Where there is ha - tred, let me sow love and bring for-give -
2. Where there is doubt - ing, let me sow faith and bring as - sur -
4. Where there is dark - ness, let me give light and bring re - joic -

(Em7)

Gm7

(A/C#)

C/E

Cue

Vocal Only

(D)

F

(A/C#)

C/E

(Bm7)

Dm7

(Bm7/A)

Dm7/C



1. - ness to the place of in - jury.
2. - ance to the heart un - be - lief.
4. - ing to the soul in - cessant fear.

1

(Em7)

Gm7

(C)

Eb

(A/C#)

C/E

D.S.



1. Make me a chan - nel of your peace.

2, 3

(Em7)

Gm7

(A7/C#)

C7/E

(D)

F

(Em7/D)

Gm7/F

(D)

F



- 2, 4. Make me a chan - nel of your peace.

VERSES 3, 5

(A/C#) C/E (Bm7) Dm7 (A/C#) C/E (D) F

Melody

3. Fa - ther, grant that I may nev - er seek
 5. For it is in giv - ing we re - ceive,

Harmony

(C6,9) Eb6,9 (Bm7) Dm7 (G6,9) Bb6,9

3. so much to be con - soled as to con - sole;
 5. and in for - giv - ing that we are for - giv - en.

(Bm7) Dm7 (A/C#) C/E 1 (D) F

3. to be under - stood as to un - der - stand;
 5. And so it is in - g to our

(C6,9) Eb6,9 (F) Ab (Em7) Gm7 (A/C#) C/E

3. to be loved as to e with all my soul,

3. Oo

(D) F (A/C#) C/E (Bm7) Dm7 (A/C#) C/E D.S.

3. with all my soul.

2
 (D) (C6,9) (F) (Em7) (A)
 F Eb6,9 Ab Gm7 C

5. ver - y ___ selves that we ___ are born a - gain ___ to life ___ that has ___ no ___ end. ___

VERSE 6
 (D) (Em7/D) (D)
 F Gm7/F F

5. _____ 6. Make a chan - nel of ___ your peace, _____

(Em7/D) (D) (Em7) (D) (Bm7) (Bm7/A) (G)
 Gm7/F F Gm7/F Dm7 Dm7/C Bb

6. the keep - er of ___ that is pure ___ and true, ___ a door ___ that o -

(Em7) (A/C#) (D) (A/C#) (Bm7) (Bm7/A)
 Gm7 C/E F C/E Dm7 Dm7/C

6. - pens to re - veal the ver - y heart ___ of you. _____

(G add9) Bbadd9

6. Make me ___ a chan - nel, ___ O Lord, ___ make ___ me your chan - nel;

(Em7) Gm7 (A7) C7 (Dadd9) Fadd9 (A/C#) C/E

6. make me a chan - nel of your peace.

(Bm7) Dm7 (A/C#) C/E **Final (D) F** **Alternate Ending (Dadd9) Fadd9** (A/C#) C/E (Bm7) Dm7

6. Let me sow love;

(A/C#) C/E (Dadd9) Fadd9 (A/C#) C/E (Bm7) Dm7 (A/C#) C/E

6. let me s faith.

(Dadd9) Fadd9 (A/C#) C/E (Bm7) Dm7 (A/C#) C/E (D) F

6. Make me a chan - nel your peace.

SAM