

20321  
88564 (PDF)

**This Holy Light**  
SATB Choir, Keyboard, Guitar, Assembly

Ricky Manalo, CSP



# This Holy Light

Ricky Manalo, CSP

FROM THE COLLECTION

***This Holy Light***

Songbook #20296

CD #20295

ocp.org | 1-800-LITURGY (548-8749)



# This Holy Light

for Jerry Chiusano, in friendship and in gratitude

Ricky Manalo, CSP  
Choral arrangement by Craig S. Kingsbury

**INTRO** *Gentle rubato* (♩ = ca. 102)

Keyboard

Am Em Fadd9 G C Am Em

*mf* *p*

F Em F G C Csus4 C

© 2006, Ricky Manalo, CSP. Published by OCP, 5536 NE Hassalo, Portland, OR 97213. All rights reserved.

\*If Solo Instrument plays melody, keyboardist plays only chords.

Solo Instrument part (70512-Z3) is available online. Visit [ocp.org](http://ocp.org).

**REFRAIN**

Soprano *mf* *p*

Alto

Tenor

Bass *mf* *p*

Am Em Fadd9 G C Am

*mf* *p*

1-5

East, — look to the sky: Christ, our Sav - ior, is

our

Em F Em F 1-5 G

to Verses **Final**

born. Sav - ior, is born.

Sav - ior, is born.

C Csus4 C to Verses **Final** G Am Em F

*rit.* Christ, our Sav - ior, is born. *Fine*

*rit.* our Sav - ior, is born.

Em F G C Csus4 C *Fine*

*rit.*

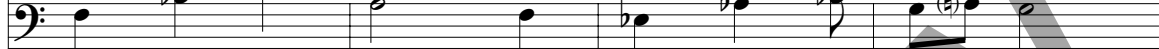
## VERSES

## Melody

*mp*

1. In a world of suff - 'ring, \_\_\_\_\_ in a world of pain,
2. In a world of con - flict, \_\_\_\_\_ in a world at war,
3. In a world of hun - ger where all we want is more,
4. In a world of blood - shed, \_\_\_\_\_ in a world of hate,
5. In a world of mys - t'ry, where no one can be sure,

## Harmony

*pp*

3, 5. Fol - low the star; oh, fol - low the ho - ly light!

B $\flat$ sus2 F/A A $\flat$ maj7 C/G

*mp*

*gradually building* *mf* *D.S.*

1. where do we seek an - swers to un - der - stand our faith? \_\_\_\_\_
2. where do we seek an - swers to the vio - lence we ab - hor? \_\_\_\_\_
3. where do we seek an - swers to wel - come in the poor? \_\_\_\_\_
4. where do we seek an - swers be - fore it's all too late? \_\_\_\_\_
5. where do we seek an - swers to o - pen wide our doors? \_\_\_\_\_

*gradually building* *mf* *D.S.*

3, 5. Fol - low \_\_\_\_\_ the star! \_\_\_\_\_

Am Em Fadd9 Gsus4 G *D.S.*

*gradually building* *mf*

# This Holy Light

for Jerry Chiusano, in friendship and in gratitude  
(Guitar/Vocal)

Ricky Manalo, CSP

INTRO *Gentle rubato* (♩ = ca. 102)

Am *mf* Em Fadd9 G C Am *p* Em

(Keyboard)

F Em F G C C<sub>sus4</sub> C

REFRAIN

Am *mf* Em Fadd9 G C Am *p*

Come fol - low the star, this ho - ly light! Peo - ple, look

Em F Em F G

East, look to the sky: Christ, our Sav - ior, is born.

1-5  
C C<sub>sus4</sub> C to Verses


**Final**  
Am Em F Em F *rit.* G C C<sub>sus4</sub> C *Fine*

born. Christ, our Sav - ior, is born.

© 2006, Ricky Manalo, CSP. Published by OCP, 5536 NE Hassalo, Portland, OR 97213. All rights reserved.

## VERSES

B $\flat$ sus2 F/A A $\flat$ maj7 C/G




*mp*

1. In a world of suff - 'ring, in a world of pain,  
 2. In a world of con - flict, in a world at war,  
 3. In a world of hun - ger where all we want is more,  
 4. In a world of blood - shed, in a world of hate,  
 5. In a world of mys - t'ry, where no one can be sure,

Am Em Fadd9 Gsus4 G D.S.

*gradually building* *mf*



1. where do we seek an - swers to un - der - stand our faith?  
 2. where do we seek an - swers to the vio - lence we ab - hor?  
 3. where do we seek an - swers to wel - come in the poor?  
 4. where do we seek an - swers be - fore it's all too late?  
 5. where do we seek an - swers to o - pen wide our doors?

## Composer Notes

Our liturgical music repertoire for the Christmas season is rich with traditional hymns and carols that, more often than not, present a romanticized narrative of the events that took place 2000 years ago. While these hymns and carols remain close to our hearts, I wanted to compose a Christmas/Epiphany song that would be more apparently relevant for us today; the text needed to make better sense in our modern world. The verses to this song address many of the heartaches that continue to plague our world: poverty, war, hatred, etc. The musical harmony to these verses is in sharp contrast to the harmonic simplicity of the refrain: each time we arrive at the refrain, we are reminded of the simple answer: “Christ, our Savior, is born!” In Christ, we Christians continuously rediscover our appropriate response to the world around us.

In the tempo marking, I note a gentle *rubato*. Try not to sing this song in too strict a meter, but allow the sensitivity of the lyrics to become a gentle reminder of the true meaning of Christmas.

**Uses:** Christmas Season: Masses of Christmas, Epiphany

Solo Instrument part (70512-Z3) is available online. Visit [ocp.org](http://ocp.org).


—*Ricky Manalo, CSP*

## Assembly Edition

THIS HOLY LIGHT


Ricky Manalo, CSP

Refrain




Come fol - low the star, this ho - ly light! Peo - ple, look  
East, look to the sky: Christ, our Sav - ior, is born.

Verses



1. In a world of suff - 'ring, \_\_\_\_\_ in a world of pain,
2. In a world of con - flict, \_\_\_\_\_ in a world at war,
3. In a world of hun - ger where all we want is more,
4. In a world of blood - shed, \_\_\_\_\_ in a world of hate,
5. In a world of mys - t'ry, where no one can be sure,

to Refrain



1. where do we seek an - swers to un - der - stand our faith?
2. where do we seek an - swers to the vio - lence we ab - hor?
3. where do we seek an - swers to wel - come in the poor?
4. where do we seek an - swers be - fore it's all too late?
5. where do we seek an - swers to o - pen wide our doors?

© 2006, Ricky Manalo, CSP. Published by OCP, 5536 NE Hassalo, Portland, OR 97213. All rights reserved.

For reprint permissions, please visit [OneLicense.net](http://OneLicense.net) or contact us at 1-800-663-1501.

