

Libera Nos

Janèt Sullivan Whitaker

(♩ = ca. 72) 1st time: Unison; 2nd time: SATB; thereafter: All

Descant

Soprano Alto

Tenor Bass

In the morn - ing, I cry to
Lí be - ra nos, sal - va

*Lí - be - ra nos, sal - va nos,
O Lord, our God, we turn to you.

you.
 nos, *In you my on - ly hope.*
su Chri - ste.

Je - su Chri ste Dó - mi - ne.
In you a - lone is our sal - va - tion.

Je - su Chri - ste Dó - mi - ne.
In you a - lone, you a - lone, our sal - va - tion.

© 2001, Janèt Sullivan Whitaker. Published by OCP, 5500 Massalo, Portland, OR 97213. All rights reserved.

*English translation: Free us, save us, Lord Jesus Christ.

And all my life, I will sing to you,
O Lord, my God, I turn to you,

L

pro - claim - ing you Lord and my God.
for you a - lone sal - va - tion.

R

N

Je - su Chri - ste, Dó - mi - ne.
In you a - lone is our sal - va - tion.

Je - su Chri - ste Dó - mi - ne.
In you a - lone, you alone, our sal - va - tion.

A

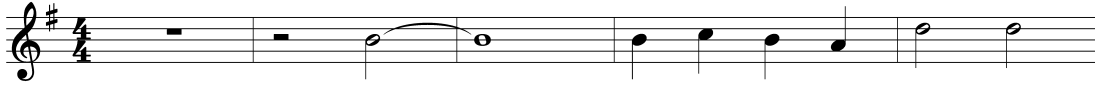
S

Libera Nos

CLARINET in B \flat

Janèt Sullivan Whitaker

(♩ = ca. 72) Tacet 1st 2 times and when Descant is sung



© 2001, Janèt Sullivan Whitaker. Published by [redacted] Salo, Portland, OR 97213. All rights reserved.

**W
L
SAMP
S**

Lord, You Are Merciful to All

Janèt Sullivan Whitaker

Descant *p* Lord, you are mer - ci - ful to

Unison *mp* Lord, you are mer - ci - ful to all, _____ for - sak - ing

all. _____ O _____

not _____ what you - a - ted. _____

look _____ not _____ on _____ but _____ draw us

Look not _____ up - on _____ sin, _____ but draw us

to _____ full _____ re - pen - tance. _____

to _____ full _____ re - pen - tance. _____

W
L
R
M
A
S

Composer Notes

Libera Nos

This piece is built on the foundation of an ostinato refrain, as in a Taizé-style chant. The obligato can be sung by a dramatic soprano or tenor, or by a reedy-voiced older child. Interest will be sustained by layering dynamics, varying between choral humming and sung Latin and English text, and weaving in and out of the ostinato vocal and instrument parts. This song will work well as a Lenten Communion processional, as a refrain to the RCIA scrutinies, and as a processional to accompany the Good Friday Veneration of the Cross.

Lord, You Are Merciful to All

This is a setting of the entrance antiphon for Ash Wednesday. It is most effective when sung unaccompanied, but if instrumental support is desired, the entire chant can be supported by a low D pedal point sustained on the organ, synthesizer, or arco string bass.

—Janèt Sullivan Whitaker

SAMPLE

LIBERA NOS

Janet Sullivan Whitaker

*Lí - be - ra nos, sal - va nos,
O Lord, our God, we turn to you.

Je - su Chri - ste Dó - mi - ne.
In you a - lone is our sal - va - tion.

Lí - be - ra nos, sal - va nos,
O Lord, our God, we turn to you.

Je - su Chri - ste Dó - mi - ne.
In you a - lone is our sal - va - tion.

***English translation: Free us, save us, Lord Jesus Christ.**
© 2001, Janet Sullivan Whitaker. Published by OCP, 5536 NE Hassalo, Portland, OR 97213. All rights reserved.

LORD, YOU ARE MERCIFUL TO ALL

Janet Sullivan Whitaker

Lord, you are mer - ci - ful to all,
not what you cre - a - ted.

Look not up - on our sin,
but draw us
from our pre - sence.

PLEASE

© 2001, Janet Sullivan Whitaker. Published by OCP, 5536 NE Hassalo, Portland, OR 97213. All rights reserved.

We are pleased to grant permission to reprint the assembly edition enclosed in the box at no charge for the special celebrations of ordination, religious profession, first Mass or funeral. Reprints must include title, composer's name and full copyright notice as it appears above. If not kept as a souvenir, copies must be destroyed after use. For all other uses please contact: OCP Reprint Permission, 1-800-LITURGY.