

His Name Is Joseph

(Guitar/Vocal)

Edition # 20591-Z2

Sarah Hart
Arrangement by Scott Soper

VERSE 1 (♩ = ca. 78)

Capo 1: (G)
Ab

(D/F#)
Eb/G



1. This new morn - ing seems so strange;

(A/E)
Bb/F

(D/F#)
Ab/Eb

(G)
Ab



1. beau-ti-ful, — but not the same. Last night the an - gel came to

(D/F#)
Eb/G

(C/E)
Db/F

(G)
Ab



1. speak, and to-day — there is no life with-in me.

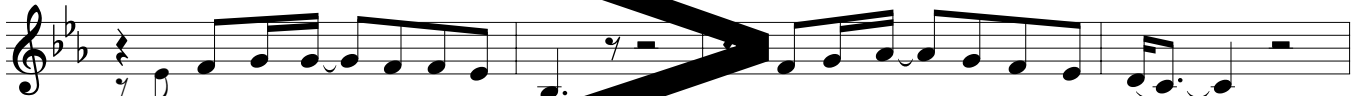
VERSES 2, 3

(G)
Ab

(D/F#)
Eb/G

(Bb/F)

(G/D)
Ab/Eb



2. I ad-mit — that I am sca - I was real - ly not pre - pared. —
3. So you have cho - sen this for me, I ac - cept — it will - ing - ly. —

(G)
Ab

(D/F#)
Eb/G

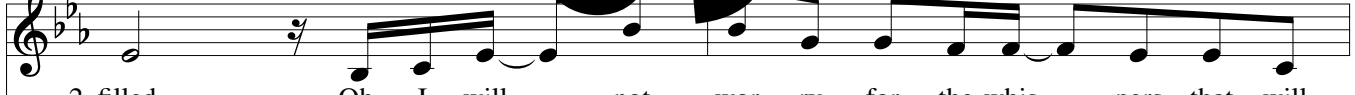
(C/E)
Db/F



2. But let the world think what they will, — for to-day — your prom - ise is ful -
3. But as for him, I can - not tell. — can on - ly pray — you've cho - sen him as

(Gmaj7)
Abmaj7
Melody

(Em)
F#m



2. filled. Oh, I will — not wor - ry for the whis - pers that will
3. well. Oh, it is — one thing for me to walk — in - to this



Harmony

(Bm7) Cm7 **(Em7)** Fm7

2. sure - ly sur - round me; but I ask your re - as - sur - ance for the
 3. glo - rious un - known. But an - oth - er, Lord, to think that I must

(Gmaj7) Abmaj7 **(A/C#)** Bb/Ab **(G/B)** Ab/C **(A/C#)** Bb/D

2. love that found me. His name is Jo-seph; he is a
 3. do it a - lone.

REFRAIN

(Dsus4) Ebsus4 **(D)** Eb **(G/B)** Ab/C **(A/C#)** Bb/D **(Dsus4)** Ebsus4 **(D)** Eb

car - pen - ter. I be - lieve our hearts are des - tined for each oth - er.

(Gmaj7) Abmaj7 **(Bm)** Cm

And when you find him, please tell him gen - tly, for this is some -

(Em) Fm **(F#m)** Gm **(Em)** Fm **(F#m)** Gm last time to ⊕

- thing I can't think he'll un - der - stand. Oh, send your an - gels to sing to

1

(G) (Asus4) (G/B) (A/C#) (Dsus4) (D) (G/B) (A/C#)
 Ab Bbsus4 Ab/C Bb/D Ebsus4 Eb Ab/C Bb/D to Verse 3

him. His name is Jo-seph.

2 INSTRUMENTAL REFRAIN

(G/B) (A/C#) (Dsus4) (D) (G/B) (A/C#) (Dsus4) (D) (Gmaj7) (Bm) (Em)(F#m)
 Ab/C Bb/D Ebsus4 Eb Ab/C Bb/D Ebsus4 Eb Abmaj7 Cm Fm Gm

Jo-seph.

VERSE 4

(G) (F#) (C/E) (G)
 Ab /G Db/F Ab D.S. al Coda

4. And if he goes, life will not but I could tru-ly use a friend.

⊕ CODA

(G) (Em) (F#m) (G) (A/G) (G)
 Ab Gm Ab Bb/Ab Ab

him. Please send your an to be with him.

(G/B) (A/C#) (Dsus4) (D) (G/B) (A/C#) (Dsus4) (D) (G/B) (A/C#)
 Ab/C Bb/D Ebsus4 Eb Ab/C Bb/D Ebsus4 Eb Ab/C Bb/D

His name is Jo-seph. His name is Jo-seph.

(Dsus4) (D) (G/B) (A/C#) (G2(no3))
 Ebsus4 Eb Ab/C Bb/D Ab2(no3rd)
 rit.