

# LUZ DE CRISTO/LIGHT OF CHRIST

Verses based on *Phos Hilaron*, Greek, ca. 200

Pedro Rubalcava  
Keyboard accompaniment by Gregorio Reyes

## ESTRIBILLO/REFRAIN (♩ = ca. 66)

Sol  
G
Re/Fa#  
D/F#
Mi m  
Em
Si m  
Bm

Luz de Cris - to, a - lum - bra nues - tras vi - das,  
 Light of Christ, dis - pel ev' - ry dark - ness.

Teclado/  
Keyboard

Do  
C
Sol  
G
1  
La7  
A7
Re  
D
2  
Re  
D
Sol  
G (Fin/Fine)

des - va - ne - ce to - da he - ri - da. to - da he - ri - da.  
 May our lives pro - claim your good - ness. claim your good - ness.

1
2  
a las Estrofas/to Verses  
(Fin/Fine)

© 2004, Pedro Rubalcava. Published by OCP, 5536 NE Hassalo, Portland, OR 97213. All rights reserved.

Nota: Toque el estribillo una vez como introducción.  
Note: Play refrain once as an intro.

ESTROFAS/VERSES: Cantor

Sol G      Re/Fa# D/F#      Mi m Em      Si m Bm      Do C      Sol G      La A      Re D

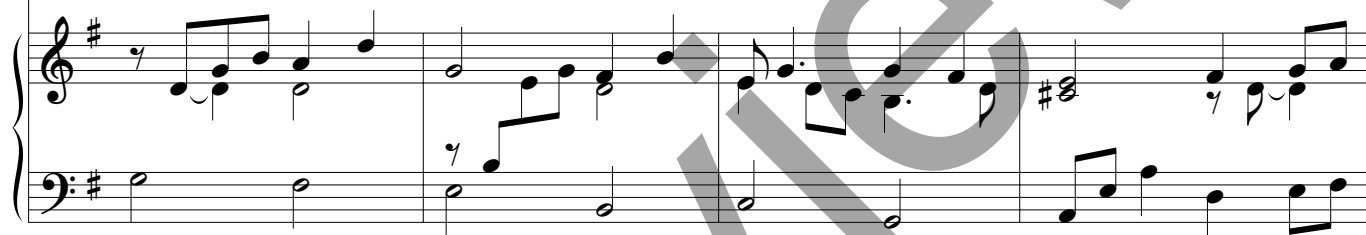


- |          |                    |        |              |
|----------|--------------------|--------|--------------|
| 1. Sol   | de jus - ti - cia, | Luz    | de a - mor.  |
| 2. Luz   | de vi - da,        | res -  | plan - dor.  |
| 3. Luz   | ra - dian - te,    | guí -  | a - nos.     |
| 4. Es -  | pe - ran - za      | y      | ver - dad,   |
| 1. Sun   | of jus - tice,     | Ra -   | diant light. |
| 2. Light | of life, O         | Day    | in night.    |
| 3. Light | un - fail - ing,   | light  | of truth.    |
| 4. Ho -  | ly Spir - it,      | Source | of Life.     |

OSTINATO



Lu - men Chri - sti. De - o grá - ti - as.



Sol G      Re/Fa# D/F#      Mi m Em      Si m Bm      Do C      Sol G      Re D      Sol G *at  $\text{♩}$ /D.S.*

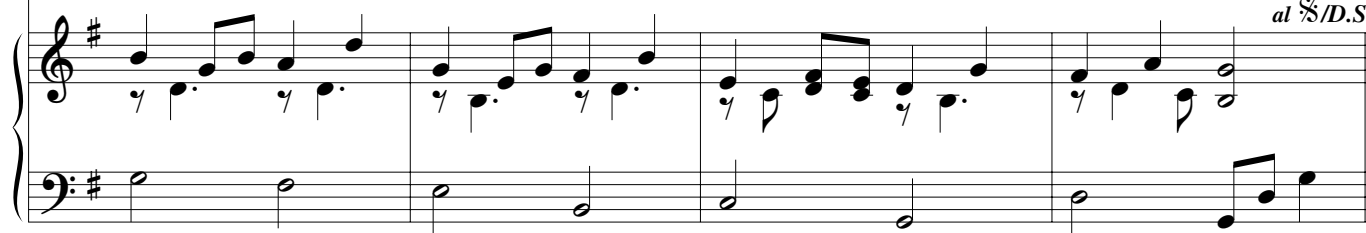


- |           |                    |       |                 |
|-----------|--------------------|-------|-----------------|
| 1. Sol    | Di - vi - no, Oh   | Luz   | de paz.         |
| 2. Luz    | e - ter - na, sin  | i -   | gual.           |
| 3. Luz    | bon - da - do - sa | que   | da ca - lor.    |
| 4. mués - | tra - nos          | la    | li - ber - tad. |
| 1. Sun    | di - vine, O       | Light | sub - lime.     |
| 2. Shin - | ing splen - dor,   | end - | less flame.     |
| 3. Light  | of love, O         | Light | of peace.       |
| 4. Lamp   | of wis - dom,      | Hope  | for all.        |

*at  $\text{♩}$ /D.S.*



Lu - men Chri - sti. De - o grá - ti - as.



*at  $\text{♩}$ /D.S.*