

LUZ DE CRISTO/LIGHT OF CHRIST

Verses based on *Phos Hilaron*, Greek, ca. 200

Pedro Rubalcava
Keyboard accompaniment by Gregorio Reyes

ESTRIBILLO/REFRAIN (♩ = ca. 66)

Sol G Re/Fa# D/F# Mi m Em Si m Bm

Luz de Cris - to, a - lum - bra nues - tras vi - das,
Light of Christ, dis - pel ev' - ry dark - ness.

Teclado/
Keyboard

Do C Sol G 1 La7 A7 Re D 2 Re D a las Estrofas/to Verses Sol G (Fin/Fine)

des - va - ne - ce to - da he - ri - da. to - da he - ri - da.
May our lives pro - claim your good - ness. claim your good - ness.

1 2 a las Estrofas/to Verses (Fin/Fine)

© 2004, Pedro Rubalcava. Published by OCP, 5536 NE Hassalo, Portland, OR 97213. All rights reserved.

Nota: Toque el estribillo una vez como introducción.
Note: Play refrain once as an intro.

ESTROFAS/VERSES: Cantor

Sol G Re/Fa# Mi m Si m Do Sol La Re
G D/F# Em Bm C G A D

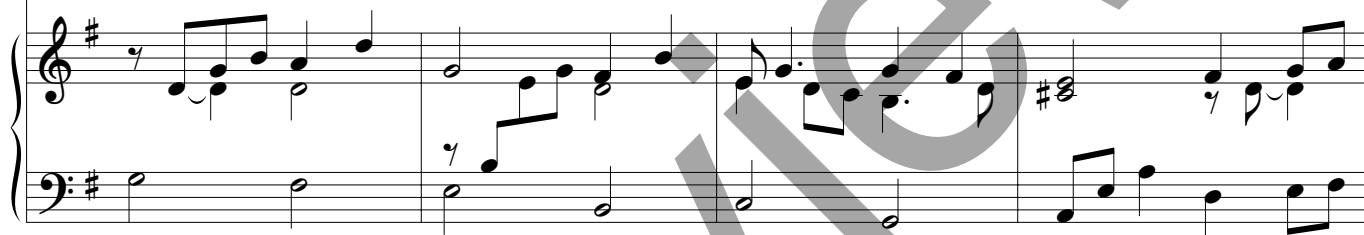


1. Sol de jus - ti - cia, Luz de a - mor.
 2. Luz de vi - da, res - plan - dor.
 3. Luz ra - dian - te, guí - a - nos.
 4. Es - pe - ran - za y ver - dad,
1. *Sun of jus - tice, Ra - diant light.*
 2. *Light of life, O Day in night.*
 3. *Light un - fail - ing, light of truth.*
 4. *Ho - ly Spir - it, Source of Life.*

OSTINATO



Lu - men Chri - sti. De - o grá - ti - as.



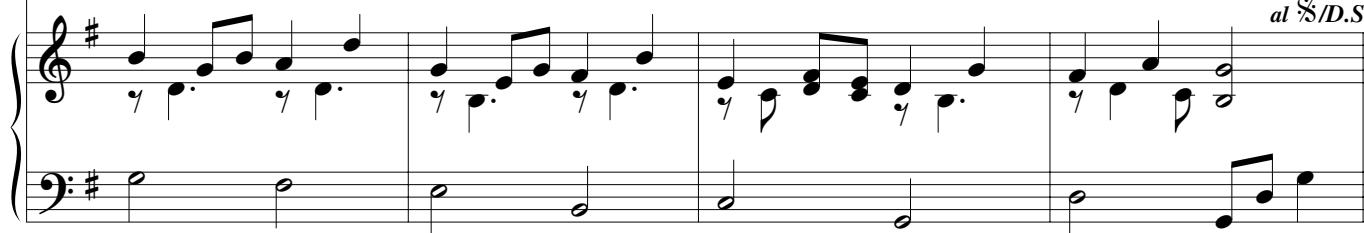
Sol G Re/Fa# Mi m Si m Do Sol Re Sol
G D/F# Em Bm C G D G *at ♩ /D.S.*



1. Sol Di - vi - no, Oh Luz de paz.
 2. Luz e - ter - na, sin i - gual.
 3. Luz bon - da - do - sa que da ca - lor.
 4. mués - tra - nos la li - ber - tad.
1. *Sun di - vine, O Light sub - lime.*
 2. *Shin - ing splen - dor, end - less flame.*
 3. *Light of love, O Light of peace.*
 4. *Lamp of wis - dom, Hope for all.*



Lu - men Chri - sti. De - o grá - ti - as. *at ♩ /D.S.*



LUZ DE CRISTO/LIGHT OF CHRIST

Verses based on *Phos Hilaron*, Greek, ca. 200

Pedro Rubalcava
Choral arrangement by Gregorio Reyes

ESTRIBILLO/REFRAIN (♩ = ca. 66)

Soprano
Contralto/
Alto

Tenor
Bajo/Bass

Sol G Re/Fa# D/F# Mi m Em Si m Bm

Luz de Cris - to, a - lum - bra nues - tras vi - das,
Light of Christ, dis - pel ev - 'ry dark - ness.

Do C Sol G 1 La7 A7 Re D 2 Re D Sol G a las Estrofas/to Verses (Fin/Fine)

des - va - ne - ce to - da he - ri - da. to - da he - ri - da.
May our lives pro - claim your good - ness. claim your good - ness.

© 2004, 2006, Pedro Rubalcava. Published by OCP, 5536 NE Hassalo, Portland, OR 97213. All rights reserved.

Nota: Toque el estribillo una vez como introducción.
Note: Play refrain once as an intro.

ESTROFAS/VERSES: Cantor

- | | | | |
|-----------------------|--------------------|-------------------|-------------|
| 1. Sol | de jus - ti - cia, | Luz | de a - mor. |
| 2. Luz | de vi - da, | res - plan - dor. | |
| 3. Luz | ra - dian - te, | guí - a - nos. | |
| 4. Es - pe - ran - za | y ver - dad, | | |
| 1. Sun | of jus - tice, | Ra - diant | light. |
| 2. Light | of life, | O Day | in night. |
| 3. Light | un - fail - ing, | light | of truth. |
| 4. Ho - ly | Spir - it, | Source | of Life. |

OSTINATO

Sol	Re/Fa#	Mi m	Si m	Do	Sol	La	Re
G	D/F#	Em	Bm	C	G	A	D

Lu - men Chri - sti. De - o grá - ti - as.

at $\text{♩}/D.S.$

- | | | | |
|---------------------|--------------------|---------------|-------------|
| 1. Sol | Di - vi - no, | Oh Luz | de paz. |
| 2. Luz | e - ter - na, | sin i - gual. | |
| 3. Luz | bon - da - do - sa | que da | ca - lor. |
| 4. mués - tra - nos | la li - ber - tad. | | |
| 1. Sun | di - vine, | O Light | sub - lime. |
| 2. Shin - ing | splen - dor, | end - less | flame. |
| 3. Light | of love, | O Light | of peace. |
| 4. Lamp | of wis - dom, | Hope | for all. |

Sol	Re/Fa#	Mi m	Si m	Do	Sol	Re	Sol
G	D/F#	Em	Bm	C	G	D	G

at $\text{♩}/D.S.$

Lu - men Chri - sti. De - o grá - ti - as.

LUZ DE CRISTO/LIGHT OF CHRIST

Verses based on *Phos Hilaron*, Greek, ca. 200

Pedro Rubalcava
Choral arrangement by Gregorio Reyes

ESTRIBILLO/REFRAIN (♩ = ca. 66)

Soprano
Contralto/
Alto

Tenor
Bajo/Bass

Sol G Re/Fa# D/F# Mi m Em Si m Bm

Luz de Cris - to, a - lum - bra nues - tras vi - das,
Light of Christ, dis - pel ev - 'ry dark - ness.

Do C Sol G 1 La7 A7 Re D 2 Re D Sol G a las Estrofas/to Verses (Fin/Fine)

des - va - ne - ce to - da he - ri - da. to - da he - ri - da.
May our lives pro - claim your good - ness. claim your good - ness.

© 2004, 2006, Pedro Rubalcava. Published by OCP, 5536 NE Hassalo, Portland, OR 97213. All rights reserved.

Nota: Toque el estribillo una vez como introducción.
Note: Play refrain once as an intro.

ESTROFAS/VERSES: Cantor

- | | | | |
|-----------------------|--------------------|-------------------|-------------|
| 1. Sol | de jus - ti - cia, | Luz | de a - mor. |
| 2. Luz | de vi - da, | res - plan - dor. | |
| 3. Luz | ra - dian - te, | guí - a - nos. | |
| 4. Es - pe - ran - za | | y ver - dad, | |
| 1. Sun | of jus - tice, | Ra - diant | light. |
| 2. Light | of life, | O Day | in night. |
| 3. Light | un - fail - ing, | light | of truth. |
| 4. Ho - ly | Spir - it, | Source | of Life. |

OSTINATO

Sol	Re/Fa#	Mi m	Si m	Do	Sol	La	Re
G	D/F#	Em	Bm	C	G	A	D

Lu - men Chri - sti. De - o grá - ti - as.

at ♩ /D.S.

- | | | | |
|---------------------|--------------------|------------------|-------------|
| 1. Sol | Di - vi - no, | Oh Luz | de paz. |
| 2. Luz | e - ter - na, | sin i - gual. | |
| 3. Luz | bon - da - do - sa | que da ca - lor. | |
| 4. mués - tra - nos | la li - ber - tad. | | |
| 1. Sun | di - vine, | O Light | sub - lime. |
| 2. Shin - ing | splen - dor, | end - less | flame. |
| 3. Light | of love, | O Light | of peace. |
| 4. Lamp | of wis - dom, | Hope | for all. |

Sol	Re/Fa#	Mi m	Si m	Do	Sol	Re	Sol
G	D/F#	Em	Bm	C	G	D	G

Lu - men Chri - sti. De - o grá - ti - as.

at ♩ /D.S.

Luz de Cristo/Light of Christ

Edition # 70924-Z3

SOLO INSTRUMENT

Pedro Rubalcava
Arranged by Rick Modlin

ESTRIBILLO/REFRAIN

The first two staves of the Refrain section are written in treble clef with a key signature of one sharp (F#) and a 4/4 time signature. The first staff begins with a quarter rest, followed by a half note G4, a quarter note A4, and a half note B4. The second staff continues with a quarter note C5, a quarter note D5, a quarter note E5, and a quarter note F#5. The third staff contains a quarter rest, a quarter note G4, a quarter note A4, and a quarter note B4. The fourth staff concludes with a quarter note C5, a quarter note D5, a quarter note E5, and a quarter note F#5.

ESTROFAS/VERSES 1, 2

The first two staves of Verses 1 and 2 are written in treble clef with a key signature of one sharp (F#) and a 4/4 time signature. The first staff begins with a quarter rest, followed by a half note G4, a quarter note A4, and a half note B4. The second staff continues with a quarter note C5, a quarter note D5, a quarter note E5, and a quarter note F#5. The third staff contains a quarter rest, a quarter note G4, a quarter note A4, and a quarter note B4. The fourth staff concludes with a quarter note C5, a quarter note D5, a quarter note E5, and a quarter note F#5.

ESTRIBILLO/REFRAIN

The second two staves of the Refrain section are written in treble clef with a key signature of one sharp (F#) and a 4/4 time signature. The first staff begins with a repeat sign, followed by a quarter note G4, a quarter note A4, and a half note B4. The second staff continues with a quarter note C5, a quarter note D5, a quarter note E5, and a quarter note F#5. The third staff contains a quarter note G4, a quarter note A4, and a quarter note B4. The fourth staff concludes with a quarter note C5, a quarter note D5, a quarter note E5, and a quarter note F#5. The word "(Fin/Fine)" is written at the end of the fourth staff.

ESTROFAS/VERSES 3, 4

The last two staves of Verses 3 and 4 are written in treble clef with a key signature of one sharp (F#) and a 4/4 time signature. The first staff begins with a quarter rest, followed by a half note G4, a quarter note A4, and a half note B4. The second staff continues with a quarter note C5, a quarter note D5, a quarter note E5, and a quarter note F#5. The third staff contains a quarter rest, a quarter note G4, a quarter note A4, and a quarter note B4. The fourth staff concludes with a quarter note C5, a quarter note D5, a quarter note E5, and a quarter note F#5.

© 2004, 2006, Pedro Rubalcava. Published by OCP, 5536 NE Hassalo, Portland, OR 97213. All rights reserved.

Nota: Toque la segunda mitad del Estribillo como introducción.
Play the second half of the Refrain as an introduction.

For use with the collection *Mi Boca Proclamará Tu Alabanza/My Mouth Will Proclaim Your Praise*, edition 20447.