

Infinite Grace

(Guitar/Vocal)

Edition # 20949-Z2

Sarah Hart and Marc Byrd

INTRO *With gentle confidence* (♩ = ca. 88)

Capo 3: (Am7) (C) (G) (D/F#) (Am7) (C) (G) (D/F#)
 Cm7 Eb Bb F/A Cm7 Eb Bb F/A



VERSE 1

(Am7) (Cmaj7) (G add9) (D/F#) (Am7add11) (Cmaj7) (G add9) (D/F#)
 Cm7 Ebmaj7 Bbadd9 F/A Cm7add11 Ebmaj7 Bbadd9 F/A



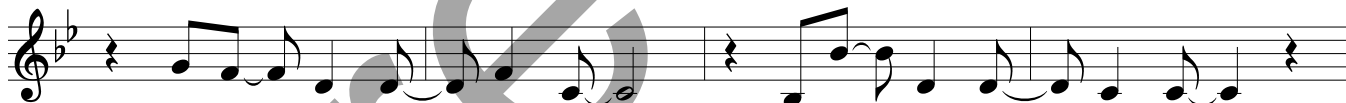
1. There is ___ a wel - come field ___ where e - ven the wa - ter's still, ___

(Am7) (Cmaj7) (G add9) (D/F#) (Em) (Cadd9)
 Cm7 Ebmaj7 Bbadd9 F/A Gm Ebadd9



1. a pas - ture made ___ for rest ___ in the arms ___ of ho - li-ness.

(Am7add11) (Cmaj7) (G add9) (D/F#) (Am7) (Cmaj7) (G add9) (D/F#)
 Cm7add11 Ebmaj7 Bbadd9 F/A Cm7 Ebmaj7 Bbadd9 F/A



1. Where mer - cy gent - ly sings ___ and thirst - y hearts ___ can drink. ___

(Em) (Am) (C) (D)
 Gm Cm Eb F



1. Let us find ___ our way, ___ lead us to ___ that place where in - fi - nite grace _

© 2007, 2008, Blue Raft Music (BMI), Meaux Mercy (BMI), River Oaks Music Company (BMI) and Sarah Hart (BMI). Published by Spirit & Song®, a division of OCP, 5536 NE Hassalo, Portland, OR 97213. All rights reserved. Administered at CapitolCMGPublishing.com. Used with permission.

REFRAIN

(G add 9) **(D/F#)** **(Am7add11)** **(Cmaj7)** **(G add 9)** **(D/F#)**
Bbadd9 **F/A** **Cm7add11** **Ebmaj7** **Bbadd9** **F/A**

falls like rain, in - fi - nite grace sings our name,

(Am7add11) **(Cmaj7)** **(G add 9)** **(D/F#)** **(Am7add11)** **(G/B)**
Cm7add11 **Ebmaj7** **Bbadd9** **F/A** **Cm7add11** **Bb/D**
 to Coda ⊕

where mer - ci - ful love shep - herds us in beau - ti - ful ways

(C) **(D/C)** **(Cadd9)** **(D)** **(Am7)** **(C)** **(G)** **(D/F#)** **(Am7)** **(C)** **(G)** **(D/F#)**
Eb **F/Eb** **Ebadd9** **F** **Cm7** **Eb** **Bb** **F/A** **Cm7** **Eb** **Bb** **F/A**

with in - fi - nite grace.

VERSE 2

(Am7add11) **(Cmaj7)** **(G add 9)** **(D/F#)** **(Am7add11)** **(Cmaj7)** **(G add 9)** **(D/F#)**
Cm7add11 **Ebmaj7** **Bbadd9** **F/A** **Cm7add11** **Ebmaj7** **Bbadd9** **F/A**

2. And let us want no more than to be with you, Lord,

(Am7) **(Cmaj7)** **(G add 9)** **(D/F#)** **(Em)** **(Cadd9)**
Cm7 **Ebmaj7** **Bbadd9** **F/A** **Gm** **Ebadd9**

2. to sim - ply catch our breath when we see the ta - ble set

(Am7) **(Cmaj7)** **(G add 9)** **(D/F#)** **(Am7add11)** **(Cmaj7)** **(G add 9)** **(D/F#)**
Cm7 **Ebmaj7** **Bbadd9** **F/A** **Cm7add11** **Ebmaj7** **Bbadd9** **F/A**

2. with cups that o - ver-flow, our fu - ture and our hope, where

(Em) **(Am)** **(C)** **(D)**
Gm **Cm** **Eb** **F** *D.S. al Coda*

2. fear is lost to love and you are more than e - nough, where in - fi - nite grace

⊕ CODA

(C) (D/C) (Cadd9) (D) (G) (Gsus4) (G) (Gsus4) (G)
 Eb F/Eb Ebadd9 F Bb Bbsus4 Bb Bbsus4 Bb

_____ with in - fi - nite grace. _____ How sweet _____

BRIDGE

(D) (Am7add11) (Cadd9)
 F Cm7add11 Ebadd9

_____ the sound _____ that sings _____ us _____ the word _____ by which _____ we're _____ found. _____

(G) (D) (Am7add11)
 Bb F Cm7add11

_____ The pro - mise that _____ sus - tains _____ us, _____ the light _____

(Cadd9) (D) (Dsus2) (D) (D/F#)
 Ebadd9 F Fsus2 F F/A

_____ that leads _____ us home. _____ Lead us home, _____ where in - fi - nite grace _____

FINAL REFRAIN

(Gadd9) (D/F#) (Am7add11) (Cmaj7) (Gadd9) (D/F#)
 Bbadd9 F/A Cm7add11 Ebmaj7 Bbadd9 F/A

_____ falls _____ like rain, _____ in - fi - nite grace _____ sings _____ our name, _____

(Am7add11) (Cmaj7) (Gadd9) (D/F#) (Am7add11) (G/B)
 Cm7add11 Ebmaj7 Bbadd9 F/A Cm7add11 Bb/D

_____ where mer - ci - ful love _____ shep - herds us _____ in beau - ti - ful ways _____

(Cadd9) (D/C) (Cadd9) (D) (G) (D/F#) (Am7) (Cadd9)
 Ebadd9 F/Eb Ebadd9 F Bb F/A Cm7 Ebadd9

with in - fi - nite grace, in - fi - nite grace, -

(G) (D/F#) (Am7) (Cadd9) (G) (D/F#) (Am7) (Cadd9) (G)
 Bb F/A Cm7 Ebadd9 Bb F/A Cm7 Ebadd9 Bb

with in - fi - nite grace, in - fi - nite grace. *rit.*

Preview