

CENTER OF MY LIFE

REFRAIN (♩ = ca. 80)

Melody

Keyboard

Chords: Eb/G, Ab, Eb, Ab, C, Eb, Bb

O Lord, you are the cen-ter of my life: I will al-ways praise you,

Chords: Cm, Gm, Ab, Fm, Fm6, C, Eb/G, C

I will al-ways serve you, I will al-ways keep you in my sight. O sight.

1 D.S. 2-5 to Verses (Fine)

VERSES

Chords: Ab, Bb, Eb, Cm

1. Keep me safe, O God, — I take ref - uge in you. — I

2. I will bless the Lord who gives me coun - sel, — who

3. And so my heart re - joic - es, my soul is glad; — 7

Chords: Ab, Bb, Eb, Cm

4. You will show — me the path of life, — the

Text: Psalm 16:1-2, 7-11. Refrain, Paul Inwood, b. 1947, © 1985, Paul Inwood. Published by OCP. All rights reserved.
 Verses, alt., © 1963, The Grail (England). All rights reserved. Used with permission of A. P. Watt, Ltd.
 Music: Paul Inwood, © 1985, Paul Inwood. Published by OCP. All rights reserved.

Fm Gm C C7 F Bb

1. say to the Lord, "You are my God. My hap - pi - ness _____
 2. e - ven at night di - rects my heart. I keep _____ the Lord _____
 3. e - ven in safe - ty shall my bod - y rest. For you will not leave my

Fm Gm C C7 F Bb

4. full - ness of joy _____ in your pres - ence, _____ at your right hand,

G Cm Ab Eb maj7/G Ab Eb maj7/G *D.C.*

1. lies in you a - lone; my hap - pi - ness _____ lies in you a - lone." _____
 2. ev - er in my sight: since he is at my right _____ hand, _____ I shall stand firm.
 3. soul a - mong the dead, nor let _____ your be - lov - ed know de - cay. _____

G Cm Ab Eb maj7/G Ab Eb maj7/G *D.C. al fine*

4. at your right hand hap - pi - ness for - ev - er.

D.C.

CENTER OF MY LIFE

REFRAIN (♩ = ca. 80)

Capo 3: (C/E) (F) (C) (F) (A) (C) (G)
 Eb/G Ab Eb Ab C Eb Bb

O Lord, you are the cen-ter of my life: I will al-ways praise you,

(Am) (Em) (F) (Dm) (Dm6) 1 (A) (C/E) 2-5 (A)
 Cm Gm Ab Fm Fm6 C Eb/G C to Verses (A)
 D.S. (Fine)

I will al-ways serve you, I will al-ways keep you in my sight. O sight.

VERSES 1-3

(F) (G) (C) (Am) (Dm)
 Ab Bb Eb Cm Fm

1. Keep me safe, O God, I take ref-uge in you. I say to the
 2. I will bless the Lord who gives me coun - sel, who e - ven at
 3. And so my heart re - joic - es, my soul is glad; e - ven in

(Em) (A) (A7) (D) (G)
 Gm C C7 F Bb

1. Lord, "You are my God. My hap - pi - ness
 2. night di - rects my heart. I keep the Lord
 3. safe - ty shall my bod - y rest. For you will not leave my

(E) (Am) (F) (Cmaj7/E) (F) (Cmaj7/E)
 G Cm Ab Eb maj7/G Ab Eb maj7/G
 D.C.

1. lies in you a - lone; my hap - pi - ness lies in you a - lone."
 2. ev - er in my sight: since he is at my right hand, I shall stand firm.
 3. soul a - mong the dead, nor let your be - lov - ed know de - cay.

Text: Psalm 16:1-2, 7-11. Refrain, Paul Inwood, b. 1947, © 1985, Paul Inwood. Published by OCP. All rights reserved. Verses, alt., © 1963, The Grail (England).
 All rights reserved. Used with permission of A. P. Watt, Ltd.
 Music: Paul Inwood, © 1985, Paul Inwood. Published by OCP. All rights reserved.

VERSE 4

(F) (G) (C) (Am) (Dm)
 Ab Bb Eb Cm Fm

4. You will show me the path of life, the full-ness of

(Em) (A) (A7) (D) (G)
 Gm C C7 F Bb

4. joy in your presence, at your right hand,

(E) (Am) (F) (Cmaj7/E) (F) (Cmaj7/E)
 G Cm Ab Eb maj7/G Ab Eb maj7/G

4. at your right hand hap-pi-ness for-ev-er.



CENTER OF MY LIFE

REFRAIN (♩ = ca. 80)

Capo 3: (C/E) (F) (C) (F) (A) (C) (G)
 Eb/G Ab Eb Ab C Eb Bb

O Lord, you are the cen-ter of my life: I will al-ways praise you,

(Am) (Em) (F) (Dm) (Dm6) 1 (A) (C/E) 2-5 (A)
 Cm Gm Ab Fm Fm6 C Eb/G C to Verses (A)
 D.S. (Fine)

I will al-ways serve you, I will al-ways keep you in my sight. O sight.

VERSES 1-3

(F) (G) (C) (Am) (Dm)
 Ab Bb Eb Cm Fm

1. Keep me safe, O God, I take ref-uge in you. I say to the
 2. I will bless the Lord who gives me coun - sel, who e - ven at
 3. And so my heart re - joic - es, my soul is glad; e - ven in

(Em) (A) (A7) (D) (G)
 Gm C C7 F Bb

1. Lord, "You are my God. My hap - pi - ness
 2. night di - rects my heart. I keep the Lord
 3. safe - ty shall my bod - y rest. For you will not leave my

(E) (Am) (F) (Cmaj7/E) (F) (Cmaj7/E)
 G Cm Ab Eb maj7/G Ab Eb maj7/G
 D.C.

1. lies in you a - lone; my hap - pi - ness lies in you a - lone."
 2. ev - er in my sight: since he is at my right hand, I shall stand firm.
 3. soul a - mong the dead, nor let your be - lov - ed know de - cay.

Text: Psalm 16:1-2, 7-11. Refrain, Paul Inwood, b. 1947, © 1985, Paul Inwood. Published by OCP. All rights reserved. Verses, alt., © 1963, The Grail (England).
 All rights reserved. Used with permission of A. P. Watt, Ltd.
 Music: Paul Inwood, © 1985, Paul Inwood. Published by OCP. All rights reserved.

VERSE 4

(F) (G) (C) (Am) (Dm)
 Ab Bb Eb Cm Fm

4. You will show me the path of life, the fullness of

(Em) (A) (A7) (D) (G)
 Gm C C7 F Bb

4. joy in your presence, at your right hand,

(E) (Am) (F) (Cmaj7/E) (F) (Cmaj7/E)
 G Cm Ab Eb maj7/G Ab Eb maj7/G

4. at your right hand happiness forever.



CENTER OF MY LIFE

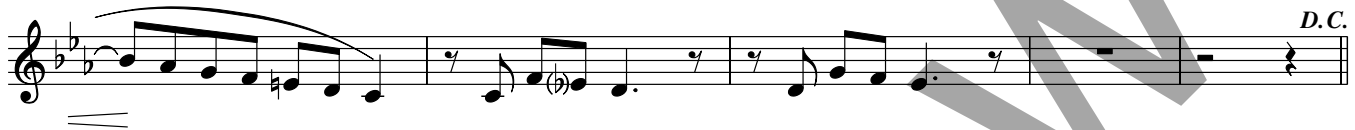
SOLO INSTRUMENT I

*REFRAIN: (♩ = ca. 80) Play after Verses 2, 3, and 4



VERSES 1, 3, 4: Tacet

VERSE 2



*Repeat Refrain 1st time only.

Music: Paul Inwood, b. 1947, © 1985, Paul Inwood. Published by OCP. All rights reserved.

SOLO INSTRUMENT II

*REFRAIN: (♩ = ca. 80) Play after Verses 1, 2, and 4



VERSES 1, 3, 4: Tacet

VERSE 2



*Repeat Refrain 1st time only.

Music: Paul Inwood, b. 1947, © 1985, Paul Inwood. Published by OCP. All rights reserved.

ELECTRIC BASS

*REFRAIN (♩ = ca. 80)

VERSES 1-4



*Repeat Refrain 1st time only.

Music: Paul Inwood, b. 1947, © 1985, Paul Inwood. Published by OCP. All rights reserved.