

# COME, LORD JESUS

SOLO INSTRUMENT

INTRO (♩ = ca. 84-114\*)

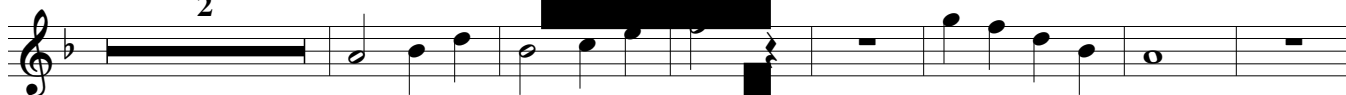
VERSE 1

16

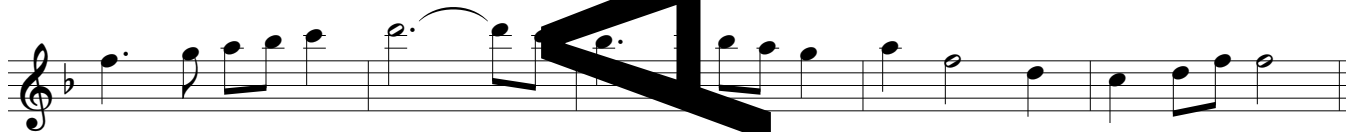


VERSE 2

2



VERSE 3



\*The tempo should be determined by the setting in which the piece is used—slowly and gently (*ca. 84*) for Evening Prayer, or more energetically (*ca. 114*) as a gathering or closing song for Eucharist.

Music: M.D. Ridge, © 1997, M.D. Ridge. Published by OCP. All rights reserved.

COME, LORD JESUS (SOLO INSTRUMENT in B $\flat$ )

SOLO INSTRUMENT in B $\flat$

INTRO (♩ = ca. 84-114\*)

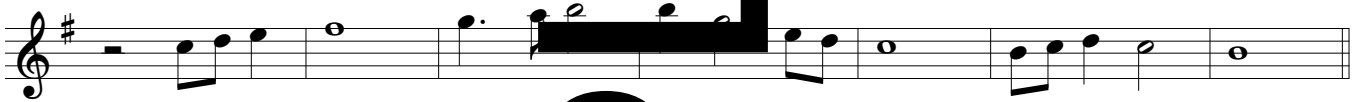
VERSE 1

16

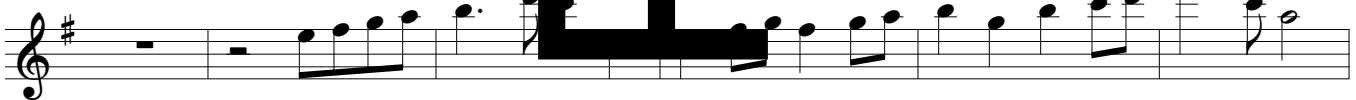


VERSE 2

2



VERSE 3



\*The tempo should be determined by the setting in which the piece is used—thoughtfully and gently (ca. 84) for Evening Prayer, or more energetically (ca. 114) as a gathering or closing song for Eucharist.

Music: M.D. Ridge, © 1997, M.D. Ridge. Published by OCP. All rights reserved.

W  
A  
S