

COME, LORD JESUS

INTRO (♩ = ca. 84-114*)

Keyboard

VERSES

1. When the dark - ness ___ clos - es in, Come, Lord ___ Je - sus!
 2. Wise and fool - ish, ___ still we ___ Come, Lord ___ Je - sus!
 3. Come to us, O ___ liv - ing Lord, Come, Lord ___ Je - sus!

1. Cour - age fails and ___ hopes grow ___ Lord Je - sus, come!
 2. Is our Bride-groom ___ at ___ gate? Lord Je - sus, come!
 3. Come with jus - tice ___ like ___ Lord Je - sus, come!

*The tempo should be determined by the setting in which the piece is used—thoughtfully and gently (ca. 84) for Evening Prayer, or more energetically (ca. 114) as a gathering or closing song for Eucharist.

Text: M.D. Ridge.

Music: M.D. Ridge; keyboard acc. by Gerard Chiusano, b. 1965.

Text and music © 1997, 2000, M.D. Ridge. Published by OCP. All rights reserved.

Gm C7 F

1. Clear the shad - ows from our sight; set our trou - bled world a - right.
 2. At his voice, our hearts have stirred, list - 'ning for his heal - ing word,
 3. Come in word and wine and bread; come a - gain that we poor be fed.

Dm Gm F/C Bb F D.S. (Fine)

1. Fill our eyes with ra - diant light Lord Je - sus, come!
 2. Con - fi - dent our cries are heard Lord Je - sus, come!
 3. Raise your ser - vants from the dead Lord Je - sus, come!

D.S. (Fine)

SAMUEL

COME, LORD JESUS

INTRO (♩ = ca. 84–114*)

Capo 3: (D) F (Em) Gm (D/A) F/C (G) B♭ (D) F

(Kbd)

VERSES

(D) F (Em) Gm (D) F (G) B♭ (Em7) Gm7 (A) C

1. When the dark - ness___ clos - es in, Come, Lord___ Je - sus!
 2. Wise and fool - ish,___ still we wait. Come, Lord___ Je - sus!
 3. Come to us, O___ liv - ing Lord, Come, Lord___ Je - sus!

(D) F (Em) Gm (D/A) F/C (G) B♭ (D) F

1. Cour - age fails and___ hopes grow dim. Lord Je - sus, come!
 2. Is our Bride-groom___ at the gate? Lord Je - sus, come!
 3. Come with jus - tice___ like a sword. Lord Je - sus, come!

(Em) Gm (A7) C7 (D) F

1. Clear the shad - ows___ from our sight, set our trou - bled___ world a - right.
 2. At his voice, our___ hearts have stirred, list - 'ning for his___ heal - ing word,
 3. Come in word and___ wine and bread; come a - gain that we poor be fed.

(Bm) Dm (Em) Gm (D/A) F/C (G) B♭ (D) F *D.S. (Fine)*

1. Fill our eyes with___ ra - diant light. Lord Je - sus, come!
 2. Con - fi - dent our___ cries are heard. Lord Je - sus, come!
 3. Raise your ser - vants___ from the dead. Lord Je - sus, come!

*The tempo should be determined by the setting in which the piece is used—thoughtfully and gently (ca. 84) for Evening Prayer, or more energetically (ca. 114) as a gathering or closing song for Eucharist.

Text and music: M.D. Ridge, © 1997, M.D. Ridge. Published by OCP. All rights reserved.

COME, LORD JESUS

INTRO (♩ = ca. 84–114*)

Capo 3: (D) F (Em) Gm (D/A) F/C (G) B♭ (D) F

(Kbd)

VERSES

(D) F (Em) Gm (D) F (G) B♭ (Em7) Gm7 (A) C

1. When the dark - ness___ clos - es in, Come, Lord___ Je - sus!
 2. Wise and fool - ish,___ still we wait. Come, Lord___ Je - sus!
 3. Come to us, O___ liv - ing Lord, Come, Lord___ Je - sus!

(D) F (Em) Gm (D/A) F/C (G) B♭ (D) F

1. Cour - age fails and___ hopes grow dim. Lord Je - sus, come!
 2. Is our Bride-groom___ at the gate? Lord Je - sus, come!
 3. Come with jus - tice___ like a sword. Lord Je - sus, come!

(Em) Gm (A7) C7 (D) F

1. Clear the shad - ows___ from our sight, set our trou - bled___ world a - right.
 2. At his voice, our___ hearts have stirred, list - 'ning for his___ heal - ing word,
 3. Come in word and___ wine and bread; come a - gain that we poor be fed.

(Bm) Dm (Em) Gm (D/A) F/C (G) B♭ (D) F *D.S. (Fine)*

1. Fill our eyes with___ ra - dant light. Lord Je - sus, come!
 2. Con - fi - dent our___ cries are heard. Lord Je - sus, come!
 3. Raise your ser - vants___ from the dead. Lord Je - sus, come!

*The tempo should be determined by the setting in which the piece is used—thoughtfully and gently (*ca. 84*) for Evening Prayer, or more energetically (*ca. 114*) as a gathering or closing song for Eucharist.

Text and music: M.D. Ridge, © 1997, M.D. Ridge. Published by OCP. All rights reserved.

COME, LORD JESUS

SOLO INSTRUMENT

INTRO (♩ = ca. 84-114*)

VERSE 1

16

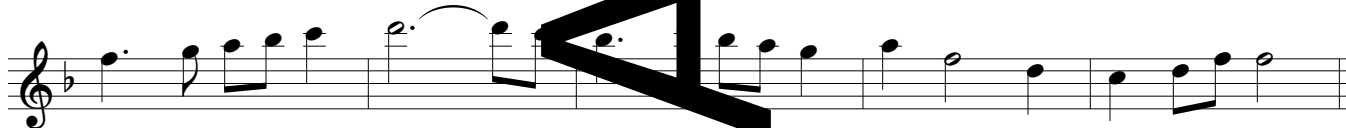


VERSE 2

2



VERSE 3



*The tempo should be determined by the setting in which the piece is used—slowly and gently (ca. 84) for Evening Prayer, or more energetically (ca. 114) as a gathering or closing song for Eucharist.

Music: M.D. Ridge, © 1997, M.D. Ridge. Published by OCP. All rights reserved.

COME, LORD JESUS (SOLO INSTRUMENT in B \flat)

SOLO INSTRUMENT in B \flat

INTRO (♩ = ca. 84-114*)

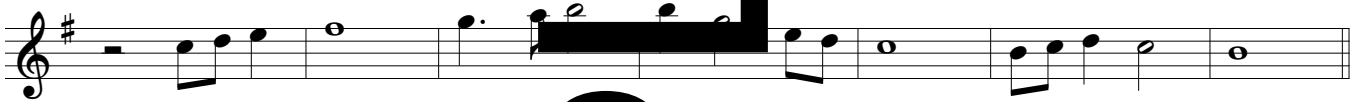
VERSE 1

16

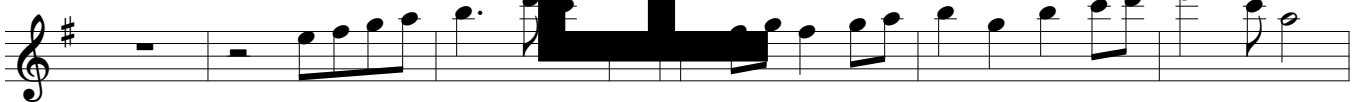


VERSE 2

2



VERSE 3



*The tempo should be determined by the setting in which the piece is used—thoughtfully and gently (ca. 84) for Evening Prayer, or more energetically (ca. 114) as a gathering or closing song for Eucharist.

Music: M.D. Ridge, © 1997, M.D. Ridge. Published by OCP. All rights reserved.

S