

MARY, FULL OF GRACE

C F C Csus4 C F C G

1. Ma - ry, full of grace, — Splen - dor of our race, Ho - ly
 2. Moth - er, Vir - gin pure, — Hope and ref - uge sure, Lead us

D G C G D7 G [G] G7

1. Vir - gin Ma - ri - a! Pray for us to Christ, your Son,
 2. safe - ly to Je - sus! Spir - it filled and low - ly,

C Csus4 C F C F C G7 C

1. Now and when our life is done! }
 2. Mir - ror of the Ho - ly! } O - ra, — o - ra pro no - bis!

Text: 55 7 77 7; O Sanctissima, alt.; Jeanne Frolick, SFCC, © 1973, Jeanne Frolick, SFCC. Published by OCP. All rights reserved.
 Music: O DU FRÖHLICHE; Tattersall's Improved Psalmody, 1794; keyboard arrangement by Ronald DeBruyn, b. 1947, © 1991, OCP. All rights reserved.

W
 E
 N
 A
 S

MARY, FULL OF GRACE

C F C Csus4 C F C G

1. Ma - ry, full of grace, — Splen - dor of our race, Ho - ly
 2. Moth - er, Vir - gin pure, — Hope and ref - uge sure, Lead us

D G C G D7 G [G] G7

1. Vir - gin Ma - ri - a! Pray for us to Christ, your Son,
 2. safe - ly to Je - sus! Spir - it filled and low - ly,

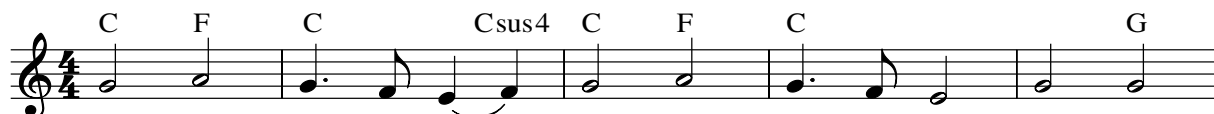
C Csus4 C F/C C F C F C G7 C

1. Now and when our life is done! } O - ra, — o - ra pro no - bis!
 2. Mir - ror of the Ho - ly! }

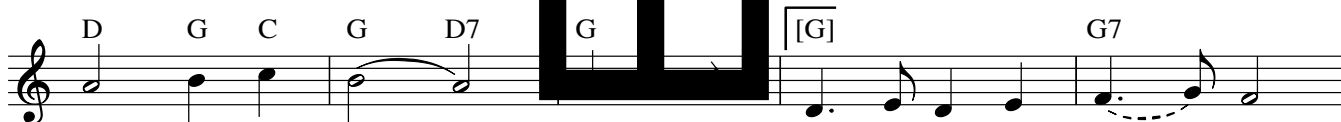
Text: 55 7 77 7; O Sanctissima, alt.; Jeanne Frolick, SFCC, © 1973, Jeanne Frolick, SFCC. Published by OCP. All rights reserved.
 Music: O DU FRÖHLICHE; Tattersall's Improved Psalmody, 1794; guitar arr. © 1991, OCP. All rights reserved.

W
L
E
S
A
M
S

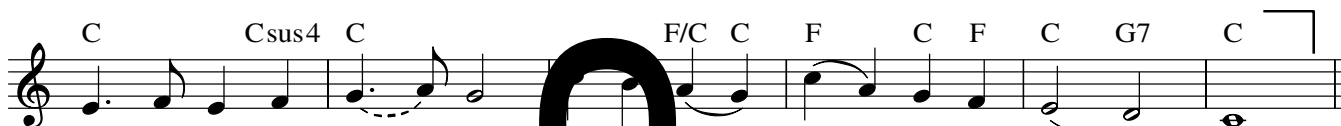
MARY, FULL OF GRACE



1. Ma - ry, full of grace, — Splen - dor of our race, Ho - ly
 2. Moth - er, Vir - gin pure, — Hope and ref - uge sure, Lead us



1. Vir - gin Ma - ri - a! Pray for us to Christ, your Son,
 2. safe - ly to Je - sus! Spir - it filled and low - ly,



1. Now and when our life is done! } O - ra, — o - ra pro no - bis!
 2. Mir - ror of the Ho - ly! }

Text: 55 7 77 7; O Sanctissima, alt.; Jeanne Frolick, SFCC, © 1973, Jeanne Frolick, SFCC. Published by OCP. All rights reserved.
 Music: O DU FRÖHLICHE; Tattersall's Improved Psalmody, 1794; guitar arr. © 1991, OCP. All rights reserved.

W
L
E
S
A
M
S

MARY, FULL OF GRACE

TRUMPET in B \flat

Musical score for Trumpet in B \flat . The score is written in treble clef, key of D major (two sharps), and 4/4 time. It consists of three staves of music. The first staff begins with a *mf* dynamic and includes a *f* dynamic later. The second staff has a *f* dynamic. The third staff includes dynamics of *f*, *mf*, *f*, *mf*, and *f*. The score concludes with a first ending marked '1' and a second ending marked '2' with a *f* dynamic. A *D.C.* (Da Capo) instruction is present between the first and second endings. There are also asterisks (*) and accents (>) in the score.

*Cue-size notes optional.
**If trumpet plays only on Verse 2, begin here.

Music: O DU FRÖHLICHE; Tattersall's *Improved Psalms*, 1794; arranged by Randall D. Gruyn, b. 1947, © 1991, OCP. All rights reserved.

SAMPLE