

GOD WILL WIPE AWAY EVERY TEAR

INTRO (♩ = 84-92)

Keyboard

Cm Eb Fm Eb Gsus4 G

REFRAIN

Cm Fm Cm Fm Cm Fm Cm G

God will wipe a - way ev - 'ry tear.

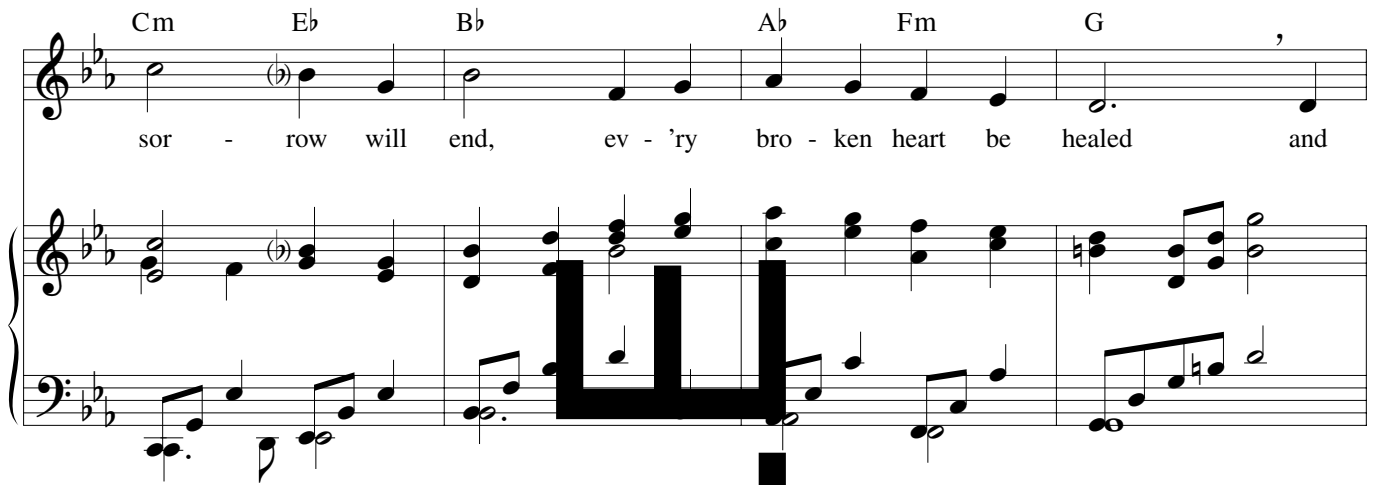
Cm Ab Eb Cm Ab Eb G7

God will wipe a - way ev - 'ry tear. Ev - 'ry

Text: Based on Revelation 7:17, 21:4, Isaiah 25:8; M.D. Ridge.
Music: M.D. Ridge; keyboard acc. by Gerard Chiusano, b. 1965.
Text and music © 1998, 1999, M.D. Ridge. Published by OCP Publications. All rights reserved.


Cm Eb Bb Ab Fm G

sor - row will end, ev - 'ry bro - ken heart be healed and



Cm Ab Eb Cm Fm

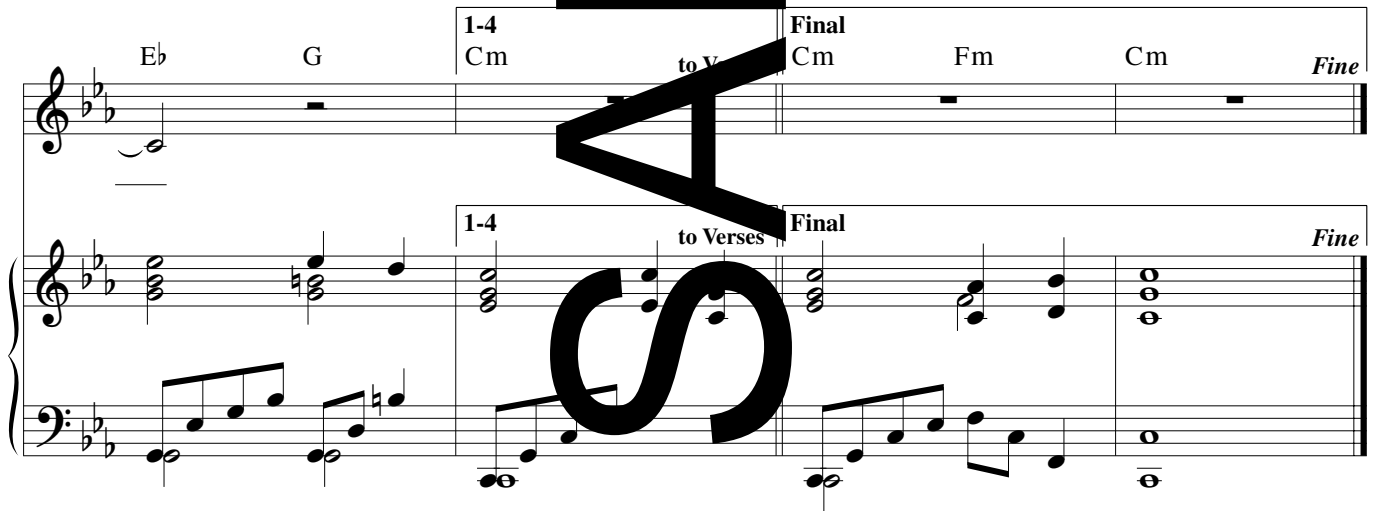
God will wipe a - way ev - 'ry tear.



Eb G

1-4 Cm to Verses Final Cm Fm Cm Fine

1-4 to Verses Final Fine



GOD WILL WIPE AWAY EVERY TEAR, cont. (3)

VERSES

Chords: Eb Bb Bb7 Eb Gm

1. On the Lord's moun - tain height, all will
 2. All is rich - ness at that feast, fin - est
 3. We will hon - or you, O Lord: you, the
 4. They who fol - low the Lamb will find

Chords: Ab Bb Cm Eb Bb

1. eat and have their food at the ban - quet that the
 2. food and fin - est who will ev - er hun - ger,
 3. ref - uge of the shel - ter of the
 4. springs of last - ing life. There will be no death or

Chords: Ab Fm G7 (Vs. 2) Cm G7 D.S.

1. Lord of Hosts pro - vides for them.
 2. ev - er thirst a - gain? Not one!
 3. need - y who cry out to you. } And
 4. griev - ing in the sight of God. }

GOD WILL WIPE AWAY EVERY TEAR

INTRO (♩ = 84-92)

Capo 3: (Am) Cm (C) Eb (Dm) Fm (C) Eb (Esus4) Gsus4 (E) G

REFRAIN

Melody (Am) Cm (Dm) Fm (Am) Cm (Dm) Fm (Am) Cm (E) G

God will wipe a - way ev - 'ry tear.

Harmony

(Am) Cm (F) Ab (C) Eb (D) (Am) (F) Ab (C) Eb (E7) G7

God will wipe a - way ev - 'ry tear. Ev - 'ry

tear. d will wipe a - way ev - 'ry

(Am) Cm (C) Eb (G) Bb (F) Ab (Dm) Fm (E) G

sor - row will end, ev - 'ry bro - ken heart be healed and

sor - row will end, ev - 'ry bro - ken heart be healed.

Text: Based on Revelation 7:17, 21:4, Isaiah 25:8; M.D. Ridge.

Music: M.D. Ridge.

Text and music © 1998, 1999, M.D. Ridge. Published by OCP Publications. All rights reserved.

(Am) Cm (F) Ab (C) Eb (E) G (Am) Cm (Dm) Fm

God will wipe a - way ev - 'ry tear.

God will wipe a - way, God will wipe a -

(C) Eb (E) G 1-4 (Am) Cm (Am) Cm (Dm) Fm (Am) Cm *Fine*

to Verses

way ev - 'ry tear. tear.

VERSES

(C) Eb (G) Bb (G7) Bb7 (C) Eb (Em) Gm

Melody

Harmony

1. On the Lord's moun - tain that height, all will
 2. All is rich - ness at that feast, fin - est
 3. We will h - on - our Lord: you, the
 4. They who fol - low the Lamb will find

(F) Ab (G) Bb (Am) Eb (C) Eb (G) Bb

1. eat and have their fill at the ban - quet that the
 2. food and fin - est will ev - er hun - ger,
 3. ref - uge of the poor, you the shel - ter of the
 4. springs of last - ing life. There will be no death or

(F) Ab (Dm) Fm (E7) G7 (Am) Cm (E7) G7 *D.S.*

1. Lord of Hosts pro - vides _____ for them. }
 2. ev - er thirst a - gain? _____ Not one! }
 3. need - y who cry out _____ to you. }
 4. griev - ing in the reign _____ of God. }

And

GOD WILL WIPE AWAY EVERY TEAR

INTRO (♩ = 84-92)

Capo 3: (Am) Cm (C) Eb (Dm) Fm (C) Eb (Esus4) Gsus4 (E) G

REFRAIN

Melody (Am) Cm (Dm) Fm (Am) Cm (Dm) Fm (Am) Cm (E) G

God will wipe a - way ev - 'ry tear.

Harmony

(Am) Cm (F) Ab (C) Eb (D) Fm (Am) Fm (F) Ab (C) Eb (E7) G7

God will wipe a - way ev - 'ry tear. Ev - 'ry

tear.

(Am) Cm (C) Eb (G) Bb (F) Ab (Dm) Fm (E) G

sor - row will end, ev - 'ry bro - ken heart be healed and

sor - row will end, ev - 'ry bro - ken heart be healed.

Text: Based on Revelation 7:17, 21:4, Isaiah 25:8; M.D. Ridge.

Music: M.D. Ridge.

Text and music © 1998, 1999, M.D. Ridge. Published by OCP Publications. All rights reserved.

(Am) Cm (F) Ab (C) Eb (E) G (Am) Cm (Dm) Fm

God will wipe a - way ev - 'ry tear.

God will wipe a - way, God will wipe a -

(C) Eb (E) G 1-4 (Am) Cm (Am) Cm (Dm) Fm (Am) Cm *Fine*

to Verses

way ev - 'ry tear. tear.

VERSES

(C) Eb (G) Bb (G7) Bb7 (C) Eb (Em) Gm

Melody

Harmony

1. On the Lord's moun - tain that height, all will
 2. All is rich - ness at that feast, fin - est
 3. We will h - on - our Lord: you, the
 4. They who fol - low the Lamb will find

(F) Ab (G) Bb (Am) Eb (C) Eb (G) Bb

1. eat and have their fill at the ban - quet that the
 2. food and fin - est will ev - er hun - ger,
 3. ref - uge of the poor, you the shel - ter of the
 4. springs of last - ing life. There will be no death or

(F) Ab (Dm) Fm (E7) G7 (Am) Cm (E7) G7 *D.S.*

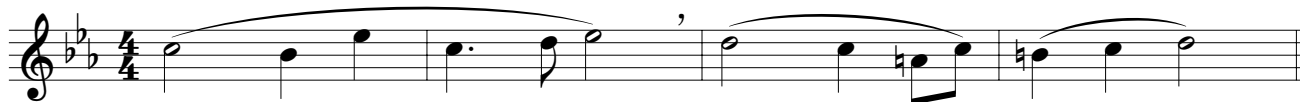
1. Lord of Hosts pro - vides _____ for them. }
 2. ev - er thirst a - gain? _____ Not one! }
 3. need - y who cry out _____ to you. }
 4. griev - ing in the reign _____ of God. }

And

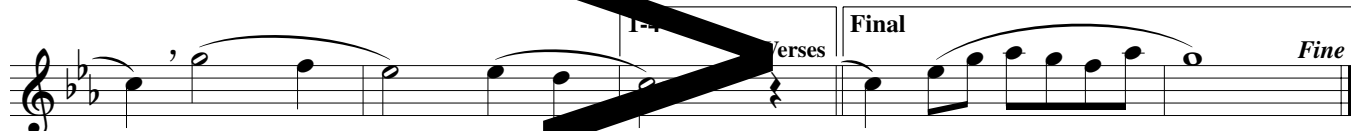
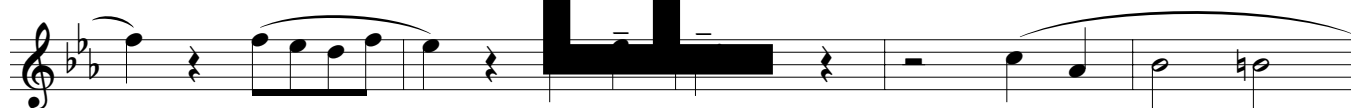
GOD WILL WIPE AWAY EVERY TEAR

SOLO INSTRUMENT

INTRO (♩ = 84-92)



REFRAIN



VERSES 1-4



Music: M.D. Ridge; arr. by Gerard Chiusano, b. 1965, © 1998, 1999, 2000, M.D. Ridge. Published by OCP Publications. All rights reserved.