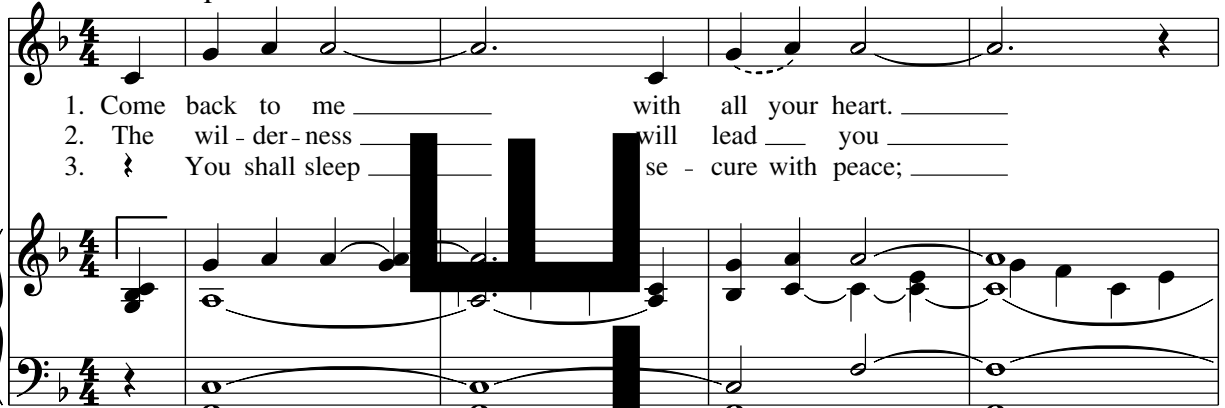


# HOSEA

VERSES *Gently, with movement*

Melody

F

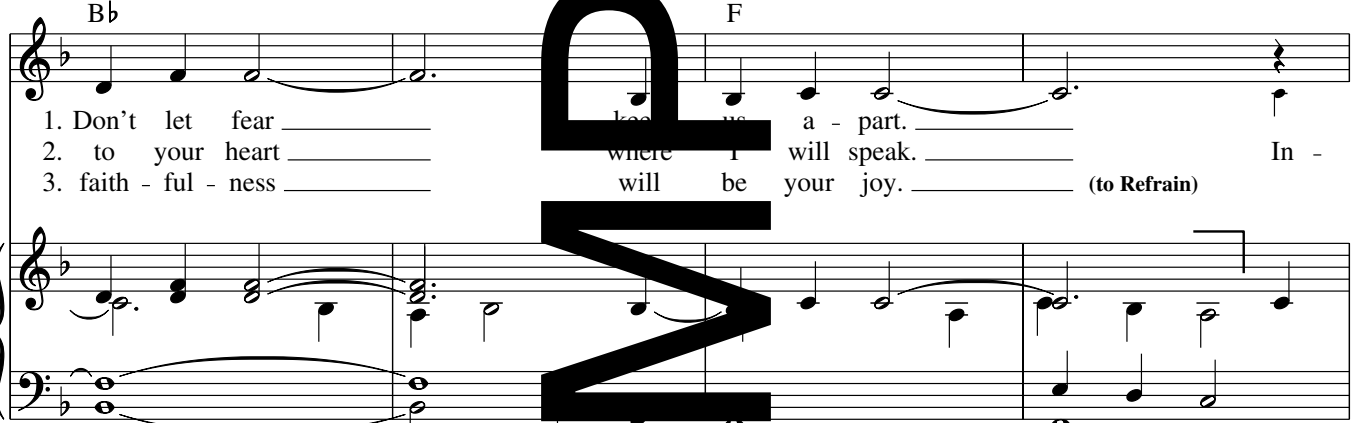


1. Come back to me \_\_\_\_\_ with all your heart. \_\_\_\_\_  
2. The wil-der-ness \_\_\_\_\_ will lead you \_\_\_\_\_  
3. You shall sleep \_\_\_\_\_ se-cure with peace; \_\_\_\_\_

Keyboard

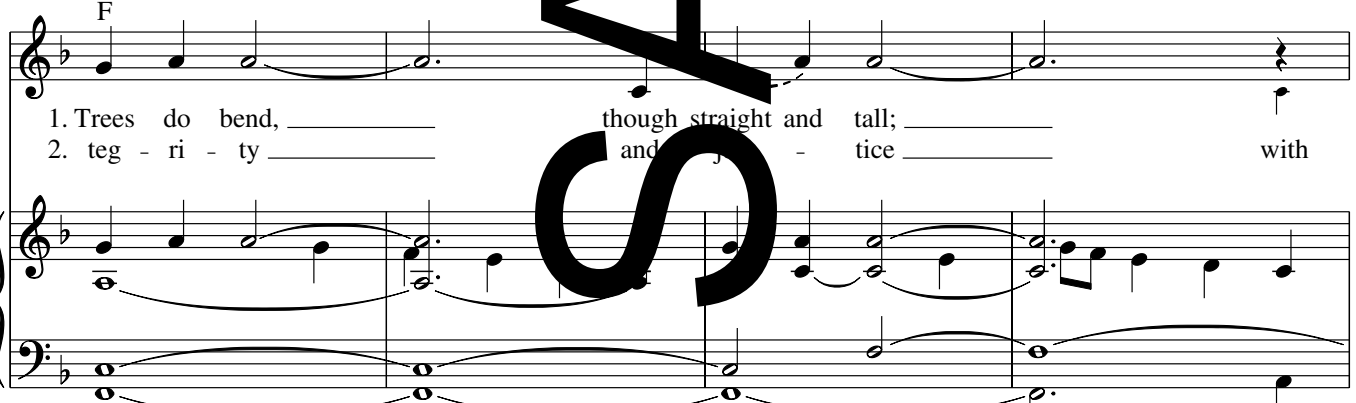
Bb

F



1. Don't let fear \_\_\_\_\_ keep us a-part. \_\_\_\_\_ In -  
2. to your heart \_\_\_\_\_ where I will speak. \_\_\_\_\_  
3. faith-ful-ness \_\_\_\_\_ will be your joy. \_\_\_\_\_ (to Refrain)

F



1. Trees do bend, \_\_\_\_\_ though straight and tall; \_\_\_\_\_ with  
2. teg-ri-ty \_\_\_\_\_ and jus-tice \_\_\_\_\_ with

Text: Based on Hosea; Weston Priory, Gregory Norbet, OSB, b. 1940.

Music: Weston Priory, Gregory Norbet, OSB; keyboard acc. by Mary David Callahan, OSB.

Text and music © 1972, 1980, The Benedictine Foundation of the State of Vermont, Inc. All rights reserved. Used with permission.

**Bb** **F**

1. so must we \_\_\_\_\_ to oth - ers' call. \_\_\_\_\_  
 2. ten - der - ness \_\_\_\_\_ & you shall know. \_\_\_\_\_

**REFRAIN**

**C** **Dm** **G**

Long have I wait - ed \_\_\_\_\_ - ing home to me and

**F/C** **C**

liv - ing deep - ly our new \_\_\_\_\_

**D.C.** **Final** **F** **C** **Dm** **Am** **Bb** **C** **F**

life. \_\_\_\_\_

**D.C.** **Final** *rit.*

# HOSEA

VERSES *Gently, with movement*

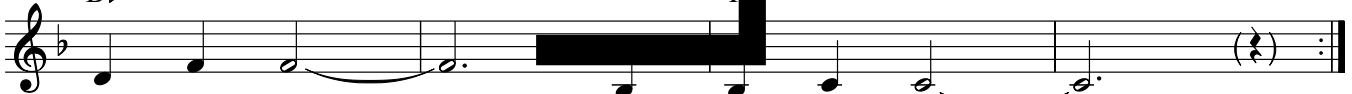
Capo 3: (D)  
F



1. Come back to me \_\_\_\_\_ with all your heart. \_\_\_\_\_  
 2. The wil - der - ness \_\_\_\_\_ all lead you \_\_\_\_\_  
 3. You shall sleep \_\_\_\_\_ se - cure with peace; \_\_\_\_\_

(G)  
Bb

(D)  
F



1. Don't let fear \_\_\_\_\_ us a - part. \_\_\_\_\_  
 so must we \_\_\_\_\_ to oth - ers' call. \_\_\_\_\_  
 2. to your heart \_\_\_\_\_ when I will speak. \_\_\_\_\_  
 ten - der - ness \_\_\_\_\_ you shall know. \_\_\_\_\_  
 3. faith - ful - ness \_\_\_\_\_ your joy. \_\_\_\_\_

## REFRAIN

(A)  
C

(Bm)  
Dm

(E)  
G



Long have I wait - ed \_\_\_\_\_ m - ing home to me and

(D/A)  
F/C

(A)  
C

1, 2  
(D)  
F



liv - ing deep - ly \_\_\_\_\_ on \_\_\_\_\_

Final

(D)

(A)

(Bm)

(A#m)

(G)

(A)

(D)

*D.C.*

F

C

Dm

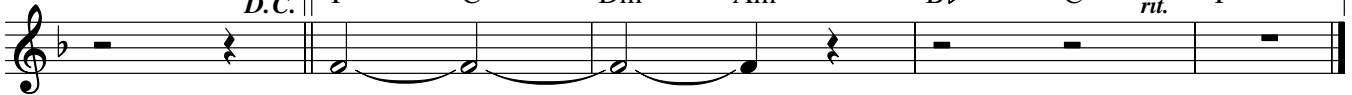
Am

Bb

C

*rit.*

F



life. \_\_\_\_\_

Text: Based on Hosea; Weston Priory, Gregory Norbet, OSB, b. 1940.

Music: Weston Priory, Gregory Norbet, OSB.

Text and music © 1972, The Benedictine Foundation of the State of Vermont, Inc. All rights reserved. Used with permission.

# HOSEA

VERSES *Gently, with movement*

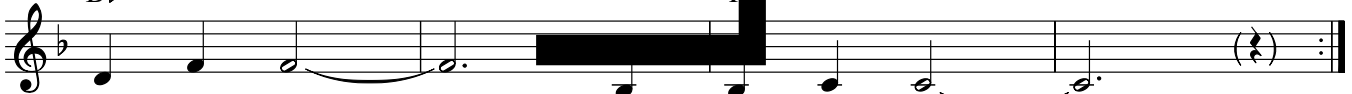
Capo 3: (D)  
F



1. Come back to me \_\_\_\_\_ with all your heart. \_\_\_\_\_  
 2. The wil - der - ness \_\_\_\_\_ all lead you \_\_\_\_\_  
 3. You shall sleep \_\_\_\_\_ se - cure with peace; \_\_\_\_\_

(G)  
Bb

(D)  
F



1. Don't let fear \_\_\_\_\_ us a - part. \_\_\_\_\_  
 so must we \_\_\_\_\_ to oth - ers' call. \_\_\_\_\_  
 2. to your heart \_\_\_\_\_ when I will speak. \_\_\_\_\_  
 ten - der - ness \_\_\_\_\_ you shall know. \_\_\_\_\_  
 3. faith - ful - ness \_\_\_\_\_ your joy. \_\_\_\_\_

REFRAIN

(A)  
C

(Bm)  
Dm

(E)  
G



Long have I wait - ed \_\_\_\_\_ m - ing home to me and

(D/A)  
F/C

(A)  
C

1, 2  
(D)  
F



liv - ing deep - ly \_\_\_\_\_ on \_\_\_\_\_

Final

(D)

(A)

(Bm)

(A#m)

(G)

(A)

(D)

*D.C.*

F

C

Dm

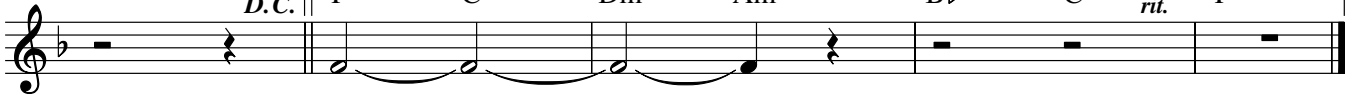
Am

Bb

C

*rit.*

F



life. \_\_\_\_\_

Text: Based on Hosea; Weston Priory, Gregory Norbet, OSB, b. 1940.  
 Music: Weston Priory, Gregory Norbet, OSB.

Text and music © 1972, The Benedictine Foundation of the State of Vermont, Inc. All rights reserved. Used with permission.

# HOSEA

SOLO INSTRUMENT

VERSES 1, 2 *Gently, with movement*

Musical notation for Verses 1 and 2, consisting of three staves of music in 4/4 time with a key signature of one flat. The music features a melodic line with various note values and rests, including a large 'W' watermark overlaid on the second staff.

REFRAIN

Musical notation for the Refrain and Verse 3, consisting of four staves of music. The Refrain section includes a first ending marked '1, 2' and a second ending marked 'to Verses 2, 3'. Verse 3 begins with a 'Final' marking and a 'rit.' instruction, followed by a 'Fine' marking and a 'pp' instruction. The section concludes with a 'D.S. al fine' instruction. A large 'S' watermark is overlaid on the bottom two staves.

Music: Weston Priory, Gregory Norbet, OSB, b. 1940, © 1972, 1980, The Benedictine Foundation of the State of Vermont, Inc. All rights reserved. Used with permission.