

# LEAD ME, LORD

VERSES (♩ = ca. 120)

Melody

Keyboard

G C G D/F#

1. Bless - ed are the poor in spir - it, long - ing for their Lord,  
 — Bless - ed are the sor - row - ing, for they shall be con - soled,  
 2. Bless - ed are the mer - ci - ful, for mer - cy shall be theirs,  
 — Blest are they whose hun - ger on - ly ho - li - ness can fill,  
 3. Blest are they who through their life - times sow the seeds of peace,  
 — Blest are you, though per - se - cu - ted in your ho - ly life,

1

Em Am7 C Bm D D/F#

1. for God's com - ing king - dom shall be theirs.  
 — and the meek shall  
 2. and the pure in heart shall see their God.  
 — for I say they  
 3. all will call them chil - dren of the Lord.  
 — for in heav - en,

2

Am7 D G D REFRAIN

1. come to rule the world. Lead me, Lord, —  
 2. shall be sat - is - fied.  
 3. great is your re - ward.

2

Text: Based on the Beatitudes; Matthew 5:3-12; 7:7, 13; John 14:6; John D. Becker, b. 1953.  
 Music: John D. Becker.  
 Text and music © 1987, John D. Becker. Published by OCP. All rights reserved.

G D/F# Em C D

lead me, Lord, by the light of truth to

G Bm Am7 G/B C D D/F#

seek and to find the nar-row way. Be my way; -

G D/F# Em C D

be my truth; be my life, my Lord, and

G	Bm	Am7	D	1-2	G	D	D.C.	Final	G
---	----	-----	---	-----	---	---	------	-------	---

lead me, Lord, to - day. day.

Em Am7 Bm C D C G

And lead me, Lord, to - day.

*rit.*

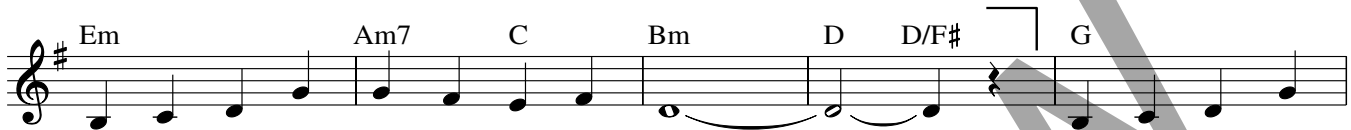
Preview

# LEAD ME, LORD

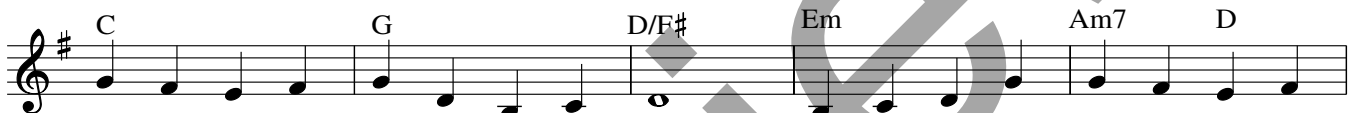
VERSES (♩ = ca. 120)



1. Bless - ed are the poor in spir - it, long - ing for their Lord,
2. Bless - ed are the mer - ci - ful, for mer - cy shall be theirs,
3. Blest are they who through their life-times sow the seeds of peace,



1. for God's com - ing king - dom shall be theirs. \_\_\_\_\_ Bless - ed are the
2. and the pure in heart shall see their God. \_\_\_\_\_ Blest are they whose
3. all will call them chil - dren of the Lord. \_\_\_\_\_ Blest are you, though



1. sor - row - ing, for they shall be con - soled, and the meek shall come to rule the
2. hun - ger on - ly ho - li - ness can fill, for I say they shall be sat - is -
3. per - se - cu - ted in your ho - ly life, for in heav - en, great is your re -

## REFRAIN



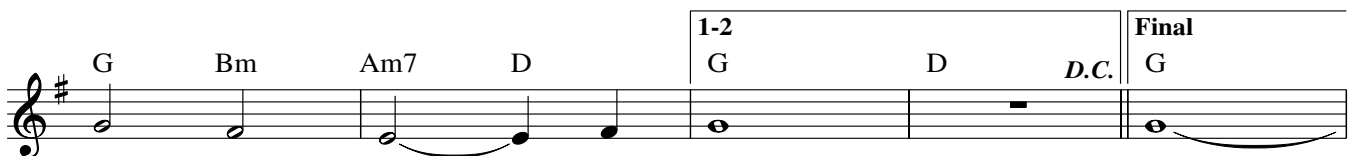
1. world. \_\_\_\_\_ Lead me, Lord, \_\_\_\_\_ lead me, Lord, \_\_\_\_\_ by the light \_\_\_\_\_
2. fied. \_\_\_\_\_
3. ward. \_\_\_\_\_



\_\_\_\_\_ of truth to seek and to find \_\_\_\_\_ the nar - row way. \_\_\_\_\_



\_\_\_\_\_ Be my way; \_\_\_\_\_ be my truth; \_\_\_\_\_ be my life, \_\_\_\_\_ my Lord, and



lead me, Lord, \_\_\_\_\_ to - day. \_\_\_\_\_ day. \_\_\_\_\_

Text: Based on the Beatitudes; Matthew 5:3-12; 7:7, 13; John 14:6; John D. Becker, b. 1953.

Music: John D. Becker.

Text and music © 1987, John D. Becker. Published by OCP. All rights reserved.

22274-ZZ

Edition #91088

Musical notation for the second part of the song. The key signature is one sharp (F#). The melody is written on a treble clef staff. The lyrics are: "And lead me, Lord, to - day." The notes are: G4 (quarter), A4 (quarter), B4 (quarter), C5 (quarter), B4-A4 (quarter), G4 (quarter), F#4 (quarter), E4 (quarter), D4 (half). Chords are indicated above the staff: Em, Am7, Bm, C, D, C, C *rit.*, G. The word "rit." is written below the staff above the final C chord. The lyrics are placed below the staff, with "And" under the first G, "lead" under the A, "me," under the B, "Lord," under the C, "to" under the B-A, and "day." under the G. There are two blank lines under the first G and one blank line under the "to".

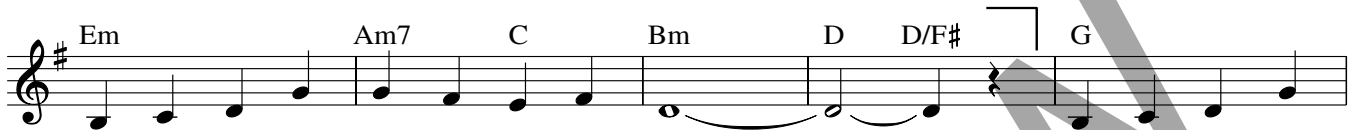
Preview

# LEAD ME, LORD

VERSES (♩ = ca. 120)



1. Bless-ed are the poor in spir-it, long-ing for their Lord,
2. Bless-ed are the mer-ci-ful, for mer-cy shall be theirs,
3. Blest are they who through their life-times sow the seeds of peace,



1. for God's com-ing king-dom shall be theirs. \_\_\_\_\_ Bless-ed are the
2. and the pure in heart shall see their God. \_\_\_\_\_ Blest are they whose
3. all will call them chil-dren of the Lord. \_\_\_\_\_ Blest are you, though



1. sor-row-ing, for they shall be con-soled, and the meek shall come to rule the
2. hun-ger on-ly ho-li-ness can fill, for I say they shall be sat-is-
3. per-se-cu-ted in your ho-ly life, for in heav-en, great is your re-

## REFRAIN



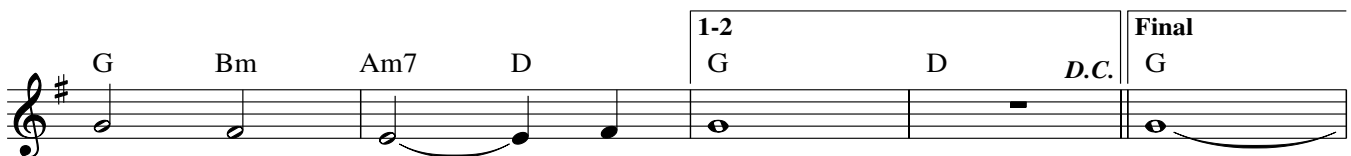
1. world. \_\_\_\_\_ Lead me, Lord, \_\_\_\_\_ lead me, Lord, \_\_\_\_\_ by the light \_\_\_\_\_
2. fied. \_\_\_\_\_
3. ward. \_\_\_\_\_



\_\_\_\_\_ of truth to seek and to find \_\_\_\_\_ the nar-row way. \_\_\_\_\_



\_\_\_\_\_ Be my way; \_\_\_\_\_ be my truth; \_\_\_\_\_ be my life, \_\_\_\_\_ my Lord, and



lead me, Lord, \_\_\_\_\_ to - day. \_\_\_\_\_ day. \_\_\_\_\_

Text: Based on the Beatitudes; Matthew 5:3-12; 7:7, 13; John 14:6; John D. Becker, b. 1953.  
Music: John D. Becker.  
Text and music © 1987, John D. Becker. Published by OCP. All rights reserved.

22274-72  
Edition #91088

Musical notation for the second part of the song. The key signature is one sharp (F#). The melody is written on a treble clef staff. The lyrics are: "And lead me, Lord, to - day." The notes are: G4 (quarter), A4 (quarter), B4 (quarter), C5 (quarter), B4-A4 (quarter), G4 (quarter), F#4 (quarter), E4 (quarter), D4 (half). Chords are indicated above the staff: Em, Am7, Bm, C, D, C, and G. A *rit.* (ritardando) marking is placed above the final C chord. The piece ends with a double bar line.

Preview

# LEAD ME, LORD

SOLO INSTRUMENT I & II

VERSES 1-3 (♩ = ca. 120)

unison

I  
II

REFRAIN

*div.*

1-2

*rit.*

*rit.*

*D.C.*

**Final**

Music: John D. Becker, b. 1953, © 1987, John D. Becker. Published by OCP. All rights reserved.