

LIVES BROUGHT TOGETHER

VERSES *Lively* (♩ = ca. 76)

Melody

Keyboard

mp

1. Lives brought to- geth - er this ho - ly day:
 2. Two come to- geth - er they leave as one.
 3. Car - ry the trea - sur - es to all the poor.

Chords: Eb, Ab/Eb, Eb

1. a man and wom - an God has made.
 2. They reap the har - vest of the seed God has sown.
 3. Give of the rich - es of the love you have known.

Chords: Eb, Eb/D, Ab/C, Eb, Fm, Bb

1. The life — they prom - ise will light our way, for
 2. In — times of sor - row when night is long, the
 3. The world — is hun - gry for what you've known: the

Chords: Fm, Bb, Eb, Eb/D, Cm, Cm/Bb

Text: Dan Schutte, b. 1947.
 Music: Dan Schutte; keyboard acc. by Tom Kendzia, b. 1954.
 Text and music © 1992, Daniel L. Schutte. Published by OCP Publications. All rights reserved.

LIVES BROUGHT TOGETHER, cont. (2)

Ab Ab/G Fm Bb Eb Ab/Eb Eb Ab/Eb

1. love has been born this day.
2. love of the Lord will stay.
3. love of our God this day.

cresc.

REFRAIN

Eb Ab/Eb Eb Fm Bb

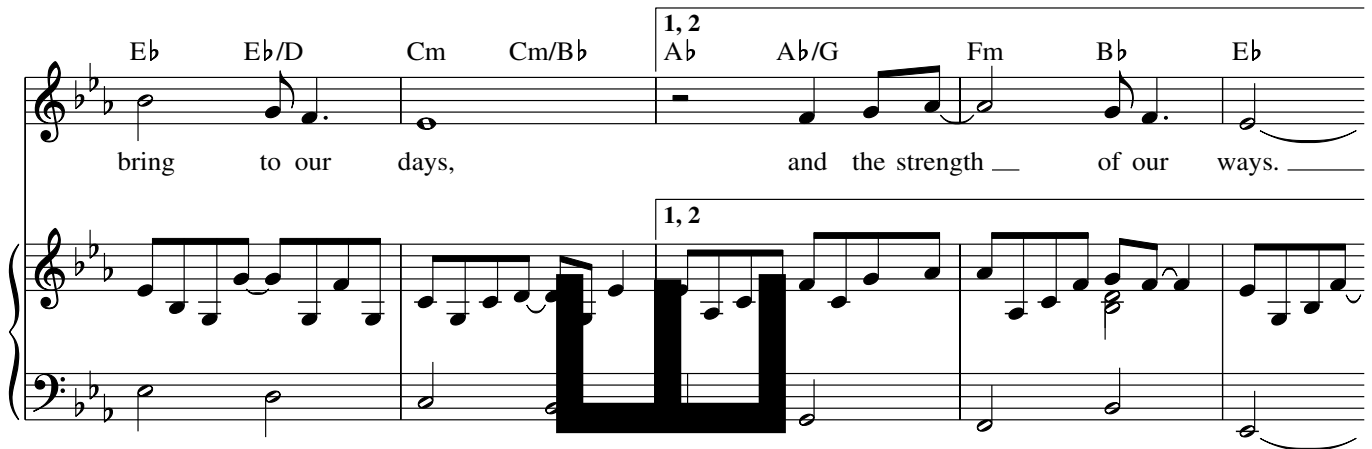
Lord, may your love be the mel - o - dy we

Eb Eb/D Ab/C Eb/Bb Fm Bb

sing, _____ be the har - mo - ny we

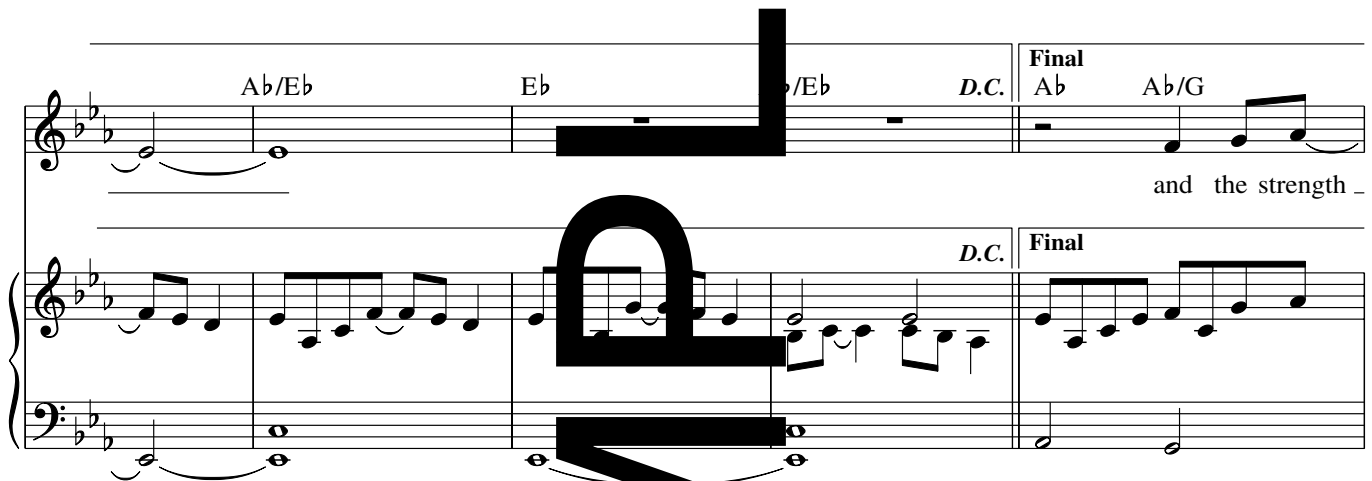
Chords: Eb Eb/D Cm Cm/Bb | 1, 2 | Ab Ab/G Fm Bb Eb

bring to our days, and the strength of our ways.



Chords: Ab/Eb Eb Eb/Eb D.C. | Final | Ab Ab/G

and the strength



Chords: Fm Bb Eb Eb/D Ab/C Eb Eb/D

of our ways.



Chords: Ab/C Eb Eb Ab/C Bb Eb Ab/Eb Eb



LIVES BROUGHT TOGETHER

VERSES *Lively* (♩ = ca. 76)

Capo 1: (D)

mp Eb

(G/D)

Ab/Eb

(D)

Eb



1. Lives brought to-ge - er this ho - ly day:
 2. Two come to-ge - er; they leave as one.
 3. Car - ry the tre - sure to all the poor.

(D)

Eb

(D/C#)

Eb/D

(G/B)

Ab/C

(D/A)

Eb/Bb

(Em)

Fm

(A)

Bb



1. a man and wom an ten the love God has made.
 2. They reap the har - vest of the seed God has sown.
 3. Give of the rich - of the love you have known.

(Em)

Fm

(A)

Bb

(D)

Eb

(D/C#)

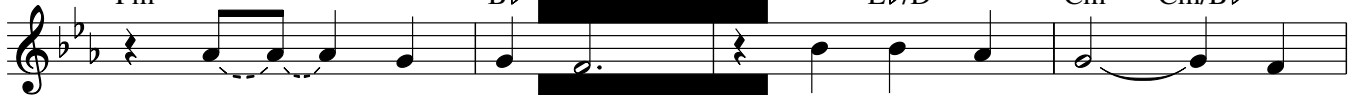
Eb/D

(Bm)

Cm

(Bm/A)

Cm/Bb



1. The life ___ they prom will light our way, ___ for
 2. In ___ times of sor - row, when night is long, ___ the
 3. The world ___ is hun - gry for what you've known: ___ the

(G)

Ab

(G/F#)

Ab/G

(Em)

Fm

(D)

Bb

(G/D)

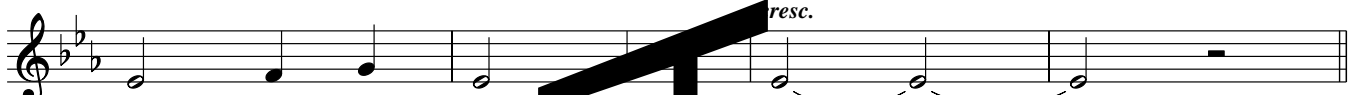
Ab/Eb

(D)

Eb

(G/D)

Ab/Eb



1. love has been born this day. _____
 2. love of the Lord will stay. _____
 3. love of our God this day. _____

REFRAIN

(D)

f Eb

(G/D)

Ab/Eb

(D)

Eb

(Em)

Fm

(A)

Bb



Lord, may your love be the mel - o - dy we

(D) Eb (D/C#) Eb/D (G/B) Ab/C (D/A) Eb/Bb (Em) Fm (A) Bb

sing, _____ be the har - mo - ny _____ we

(D) Eb (D/C#) Eb/D (Bm) Cm (Bm/A) Cm/Bb (G) Ab 1, 2 (G/F#) Ab/ (Em) Fm (A) Bb (D) Eb

bring to our days, _____ and the strength _____ of our ways. _____

(G/D) Ab/Eb (D) Eb (G) Ab D.C. (G) Ab (G/F#) Ab/G (Em) Fm

_____ and the strength _____

(A) Bb (D) E (D/C#) Eb (G/B) Ab/C (D) Eb (D/C#) Eb/D

_____ of our ways. _____

(G/B) Ab/C (D) Eb (D/C#) Eb/D (G/B) Ab/C (A) Bb (D) Eb (G/D) Ab/Eb (D) Eb

W
A
S

LIVES BROUGHT TOGETHER

VERSES *Lively* (♩ = ca. 76)

Capo 1: (D)

mp Eb

(G/D)

Ab/Eb

(D)

Eb



1. Lives brought to-ge - er this ho - ly day:
 2. Two come to-ge - er; they leave as one.
 3. Car - ry the tre - sure to all the poor.

(D)

Eb

(D/C#)

Eb/D

(G/B)

Ab/C

(D/A)

Eb/Bb

(Em)

Fm

(A)

Bb



1. a man and wom an ten the love God has made.
 2. They reap the har - vest of the seed God has sown.
 3. Give of the rich - of the love you have known.

(Em)

Fm

(A)

Bb

(D)

Eb

(D/C#)

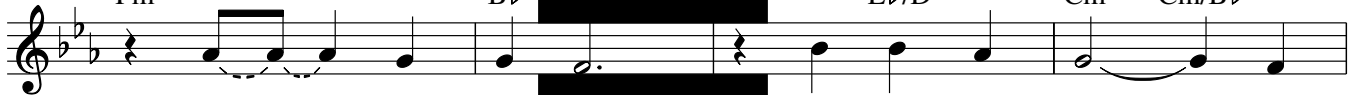
Eb/D

(Bm)

Cm

(Bm/A)

Cm/Bb



1. The life ___ they prom will light our way, ___ for
 2. In ___ times of sor - row, when night is long, ___ the
 3. The world ___ is hun - gry for what you've known: ___ the

(G)

Ab

(G/F#)

Ab/G

(Em)

Fm

(D)

Bb

(G/D)

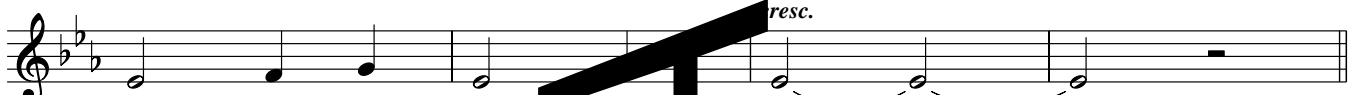
Ab/Eb

(D)

Eb

(G/D)

Ab/Eb



1. love has been born this day. _____
 2. love of the Lord will stay. _____
 3. love of our God this day. _____

REFRAIN

(D)

f Eb

(G/D)

Ab/Eb

(D)

Eb

(Em)

Fm

(A)

Bb



Lord, may your love be the mel - o - dy we

(D) Eb (D/C#) Eb/D (G/B) Ab/C (D/A) Eb/Bb (Em) Fm (A) Bb

sing, _____ be the har - mo - ny _____ we

(D) Eb (D/C#) Eb/D (Bm) Cm (Bm/A) Cm/Bb (G) Ab (G/F#) Ab (Em) Fm (A) Bb (D) Eb

bring to our days, _____ and the strength _____ of our ways. _____

(G/D) Ab/Eb (D) Eb (G) Ab (G/F#) Ab/G (Em) Fm

_____ and the strength _____

(A) Bb (D) E (D/C#) Eb (G/B) Ab/C (D) Eb (D/C#) Eb/D

_____ of our ways. _____

(G/B) Ab/C (D) Eb (D/C#) Eb/D (G/B) Ab/C (A) Bb (D) Eb (G/D) Ab/Eb (D) Eb

1, 2
Final
D.C.
S