

# O COME, DIVINE MESSIAH

## VERSES

G C G G/B C Dsus4 D [D]

1. O come, di - vine Mes - si - ah; The world in si - lence waits — the day When  
 2. O Christ, whom na - tions sigh for, Whom priest and proph - et long — fore - told, Come,  
 3. You come in peace and meek - ness And low - ly will your cra - dle be; All

G C Em G/B D7 G

1. hope shall sing its tri - umph And sad - ness flee — a - way.  
 2. break the cap - tive's fet - ters, Re - deem the long - lost fold.  
 3. clothed in hu - man weak - ness Shall we your God - head see.

## REFRAIN

Am Dsus4 D G G7 Am B7 Em C

Dear Sav - ior, haste! Come, come to earth. Dis - pel the

D C D Am C6 A/C# Dsus4 D

night and show your face, and bid us hail the dawn of grace. — O

**Note:** When guitar and keyboard play together, keyboardists should improvise using the guitar chords above the melody.

Text: 78 76 with refrain; Abbé Simon-Joseph Pellegrin, 1663–1745; tr. by Sr. Mary of St. Philip, 1825–1904.

Music: VENEZ, DIVIN MESSIE; trad. French Carol, 16th cent.; keyboard acc. by Randall DeBruyn, b. 1947, © 1990, OCP. All rights reserved.

O COME, DIVINE MESSIAH, cont. (2)

G C G G/B C Dsus4 D

come, di - vine Mes - si - ah; the world in si - lence waits the day when

Bm Em C Em G/B D7 G

hope shall sing its tri - umph and sad - ness flee a - way.

Preview

# O COME, DIVINE MESSIAH

## VERSES



1. O come, di - vine Mes - si - ah; The world in si - lence waits — the
2. O Christ, whom na - tions sigh for, Whom priest and proph - et long — fore -
3. You come in peace and meek - ness And low - ly will your cra - dle



1. day When hope shall sing its tri - umph And sad - ness flee — a - way. —
2. told, Come, break the cap - tive's fet - ters, Re - deem the long - lost fold. —
3. be; All clothed in hu - man weak - ness Shall we your God - head see. —

## REFRAIN



Dear Sav - ior, haste! — Come, come to earth. Dis - pel the



night and show your face, and bid us hail the dawn of grace. — O



come, di - vine Mes - si - ah; the world in si - lence waits — the day when



hope shall sing its tri - umph and sad - ness flee — a - way. —

**Note:** When guitar and keyboard play together, keyboardists should improvise using the guitar chords above the melody.

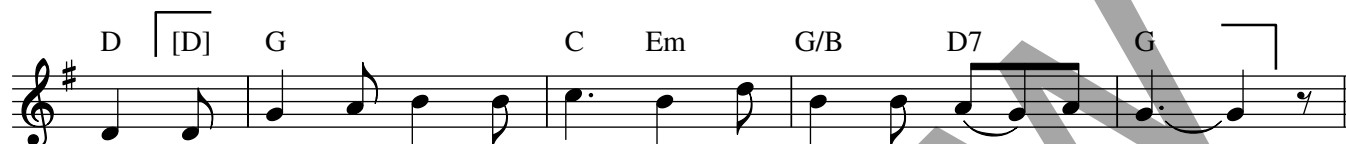
Text: 78 76 with refrain; Abbé Simon-Joseph Pellegrin, 1663–1745; tr. by Sr. Mary of St. Philip, 1825–1904.  
 Music: VENEZ, DIVIN MESSIE; trad. French Carol, 16th cent.; guitar acc. © 1995, OCP. All rights reserved.

# O COME, DIVINE MESSIAH

## VERSES



1. O come, di - vine Mes - si - ah; The world in si - lence waits — the
2. O Christ, whom na - tions sigh for, Whom priest and proph - et long — fore -
3. You come in peace and meek - ness And low - ly will your cra - dle



1. day When hope shall sing its tri - umph And sad - ness flee — a - way. —
2. told, Come, break the cap - tive's fet - ters, Re - deem the long - lost fold. —
3. be; All clothed in hu - man weak - ness Shall we your God - head see. —

## REFRAIN



Dear Sav - ior, haste! — Come, come to earth. Dis - pel the



night and show your face, and bid us hail the dawn of grace. — O



come, di - vine Mes - si - ah; the world in si - lence waits — the day when



hope shall sing its tri - umph and sad - ness flee — a - way. —

**Note:** When guitar and keyboard play together, keyboardists should improvise using the guitar chords above the melody.

Text: 78 76 with refrain; Abbé Simon-Joseph Pellegrin, 1663–1745; tr. by Sr. Mary of St. Philip, 1825–1904.  
 Music: VENEZ, DIVIN MESSIE; trad. French Carol, 16th cent.; guitar acc. © 1995, OCP. All rights reserved.

# O COME, DIVINE MESSIAH

SOLO INSTRUMENT: Use with keyboard edition only.

## VERSES 1-3

Musical notation for Verses 1-3, consisting of two staves. The first staff begins with a treble clef, a key signature of one sharp (F#), and a 6/8 time signature. It contains two measures of rests followed by a melodic line starting with a mezzo-piano (*mp*) dynamic. The second staff continues the melody with dynamics of *mp*, *mf*, and *mp*. A trill (*tr*) is marked above a note in the second measure of the second staff.

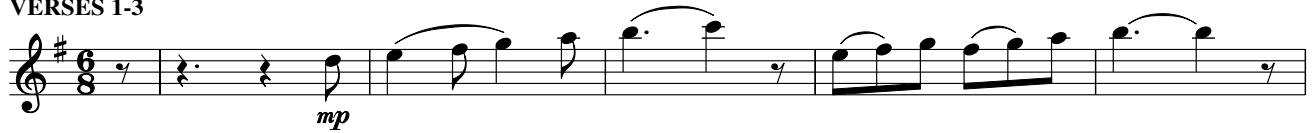
## REFRAIN

Musical notation for the Refrain, consisting of five staves. The first staff begins with a treble clef, a key signature of one sharp (F#), and a 6/8 time signature. It contains two measures of rests followed by a melodic line starting with a mezzo-forte (*mf*) dynamic. The second staff continues the melody with dynamics of *mf*, *mf*, and *mp*. A trill (*tr*) is marked above a note in the second measure of the second staff. The third staff continues with dynamics of *mf* and *mp*. The fourth staff continues with dynamics of *mf* and *mp*. The fifth staff concludes the refrain with dynamics of *mf*, *f*, and *mp*.

Music: VENEZ, DIVIN MESSIE; trad. French Carol, 16th cent.; arr. by Randall DeBruyn, b. 1947, © 1990, OCP. All rights reserved.

SOLO INSTRUMENT: Use with guitar edition only.

VERSES 1-3



Musical notation for Verses 1-3, starting with a treble clef, a key signature of one sharp (F#), and a 6/8 time signature. The piece begins with a whole rest followed by a quarter rest, then a series of eighth and quarter notes with slurs. A dynamic marking of *mp* is placed below the first measure.

REFRAIN



Musical notation for the Refrain, consisting of five staves. The first staff begins with a whole rest, followed by eighth and quarter notes with slurs. A dynamic marking of *mf* is placed below the first measure. The second staff continues with eighth and quarter notes, featuring a dynamic marking of *mp*. The third staff includes a sharp sign (#) above a note and dynamic markings of *mf* and *f*. The fourth staff continues with eighth and quarter notes, with dynamic markings of *mp* and *mf*. The fifth staff concludes the piece with eighth and quarter notes and a dynamic marking of *mp*.

Music: VENEZ, DIVIN MESSIE; trad. French Carol, 16th cent.; arr. by Randall DeBruyn, b. 1947, © 1990, OCP. All rights reserved.