

O LITTLE TOWN OF BETHLEHEM

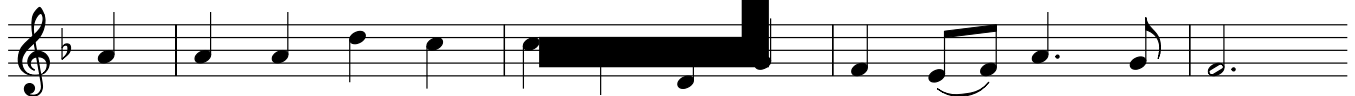
Capo 3: (D) F (D°7) F°7 (D) F (G) Bb (Em) Gm (D/A) F/C (A7) C7 (D) F



1. O lit - tle town of Beth - le - hem, How still we see thee lie!
 2. For Christ is born of Ma - ry, And gath - ered all a - bove,
 3. How si - lent - ly, how si - lent - ly, The won - drous gift is giv'n!
 4. O ho - ly Child of Be - le - lem! De - scend to us, we pray;

W

(B7) D7 (Em) Gm (D/A) F/C (A7) C7 (D) F



1. A - bove thy deep and dream - sleep The si - lent stars go by;
 2. While mor - tals sleep, the an - gels keep Their watch of won - d'ring love.
 3. So God im - parts to hu - man hearts The bless - ings of his heav'n.
 4. Cast out our sin and er - ror; Be born in us to - day.

E

(Em) Gm (D) A (Bm) Dm (Em7) Gm7 (F#) A



1. Yet in thy dark streets shin - eth The ev - er - last - ing Light;
 2. O morn - ing stars, to - geth - er Pro - claim the ho - ly birth!
 3. No ear may hear his com - ing, But in this world of sin,
 4. We hear the Christ - mas an - gel's The great glad tid - ings tell;

M

(D) F (D°7) F°7 (D) F (G) Bb (Em) Gm (D/A) F/C (A) C (D) F



1. The hopes and fears of all the years are met in thee to - night.
 2. And prais - es sing to God and King And peace to all on earth.
 3. Where meek souls will re - ceive him, still The dear Christ en - ters in.
 4. O come to us, a - bide with us, Our Lord Em - man - u - el!

S

Note: When guitar and keyboard play together, keyboardists should improvise using the guitar chords above the melody.

Text: 86 86 76 86; Phillips Brooks, 1835-1893, alt.
 Music: ST. LOUIS; Lewis H. Redner, 1831-1908; guitar acc. © 1995, OCP. All rights reserved.