

SERVANT SONG

VERSES *Not too fast* (♩ = ca. 112)

Harmony

2. I hear you call my name, Lord, and I am
 3. A-bove, be-low, and a-round me, be-fore, be-
 4. You are the light in my dark-ness. You are my
 5. I am your song and ser-vant, sing-ing your

Capo 2: (D) (G) (A) (D)
 E E/G# A B E

Melody

1. What do you call me, Lord? Where do you
 2. I hear you call my name, Lord, and I am
 3. A-bove, be-low, and a-round me, be-fore, be-
 4. You are the light in my dark-ness. You are my
 5. I am your song and ser-vant, sing-ing your

2. moved with-in me. Your Spir-it stirs my
 3. hind, and all through your Spir-it burns deep with-
 4. strength when I'm weak-ly. You give me sight when I'm
 5. praise like Ma-ry. Sur-ren-dered to your

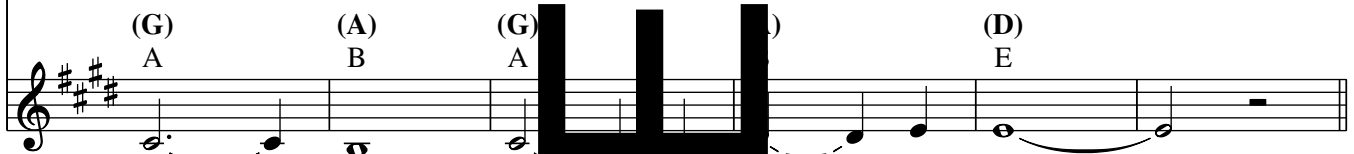
(D/F#) (G) (A) (D) (D/F#)
 E/G# A B E E/G#

1. want me to serve you? Where can I sing your
 2. moved with-in me. Your Spir-it stirs my
 3. hind, and all through me, your Spir-it burns deep with-
 4. strength when I'm weak-ly. You give me sight when I'm
 5. praise like Ma-ry. Sur-ren-dered to your

Text and music: Donna Marie McGargill, OSM, b. 1944, © 1984, OCP. All rights reserved.

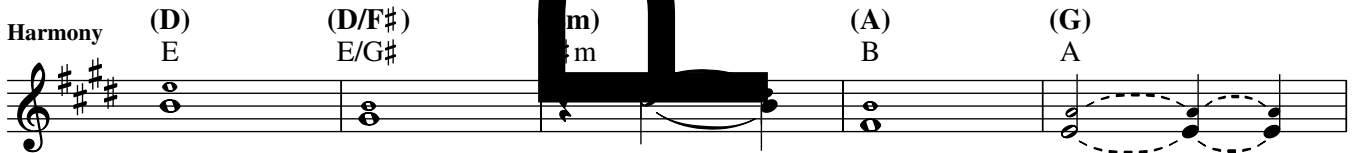


2. deep - est self. Sing _____ your songs _____ in me. _____
 3. in _____ me. Fire _____ my life with your love. _____
 4. blind - ed. Come, _____ see _____ for me. _____
 5. Spir - it, "Let it be done _____ to me." _____



1. prais - es? I _____ am _____ your song. _____
 2. deep - est self. Sing _____ your songs _____ in me. _____
 3. in _____ me. Fire _____ my _____ with your love. _____
 4. blind - ed. Come, _____ see _____ for me. _____
 5. Spir - it, "Let it be done _____ to me." _____

REFRAIN



Melody 1. Je - sus, sus, you _____
 2. Je - sus, Je - sus, you _____
 3. Je - sus, Je - sus, be _____ the
 4. Je - sus, Je - sus, you _____
 5. Je - sus, Je - sus, "Let it be _____



1. are _____ the Lord. _____
 2. are _____ my Lord. _____
 3. warmth of my heart. _____ Je - sus,
 4. are _____ my Light. _____
 5. done _____ to me." _____



1-5. Je - sus, you are the way. _____