

# SONG OF MARY

Grand and majestic (♩ = ca. 96)

Melody

Keyboard

1. Let us sing the praises of Ma - ry, daugh - ter of Da - vid's  
 2. Let us sing the praises of Ma - ry, cho - sen as bless - ed  
 3. Let us sing the praises of Ma - ry, wom - an of strong and  
 4. Let us sing the praises of Ma - ry, pierced by the sword of  
 5. Let us sing the praises of Ma - ry, friend of the poor in

Chords: Eb Cm Ab Bb Eb Fm7 Eb/G

1. ho - ly line, she who heard of an an - gel tell - ing the plan of  
 2. from the least, she who heard the song of the an - gels fill - ing the night with  
 3. stead - fast love. She who raised the Sav - ior of na - tions held in her arms the  
 4. sor - row's pain, she who saw the Son of her lov - ing nailed on a cross to  
 5. ev - 'ry age, she who saw the Son and her Sav - ior ris - en in glo - ry

Chords: Ab Bbsus4 Bb Eb Cm Ab Bb Eb Fm7 Eb/G

1. God's de - sign, how in this ho - ly sight she would moth - er  
 2. heav - en's peace. When the prom - ised one had come she gave birth to  
 3. Son of God. She who knew the fa - ther's grace taught her Son to  
 4. die in shame. Though his friends would flee in fear she re - mained for -  
 5. from the grave. Sin and death shall reign no more; Christ has o - pened

Chords: Ab Bb Eb Db G/B G7 Cm Ab Eb/G

Text: 98 98 77 88; Dan Schutte, b. 1947.

Music: SONG OF MARY; Dan Schutte.

Text and music © 1998, Daniel L. Schutte. Published by OCP. All rights reserved.

22463-Z1

Fm7 Bbsus4 Bb Eb Cm Ab Bb G/B G7 Cm Ab Eb/G

1. heav - en's Christ.  
 2. God's own Son.  
 3. know God's face.  
 4. ev - er near.  
 5. heav - en's door.

Bless - ed be the name of Ma - ry, she who trust - ed the

Ab Bb 1-4 Eb Fm/Eb Eb Bb/D Bb Cm Fm Eb/G

1-5. love of God.

Ab Bb D.C. Final Eb Fm/Eb Fm/Eb Bbsus4 Bb Ebsus4 Eb9 Eb

5. God.

D.C. Final

# SONG OF MARY

*Grand and majestic* (♩ = ca. 96)

**Descant**

5. Let us sing of Ma - ry, friend faith-ful in

**Capo 3:** (C) Eb (Am) Cm (F) A (G) Bb (C) Eb (Dm7) Fm7 (C/E) Eb/G

**Melody**

1. Let us sing the prais - es of Ma - ry, daugh - ter of Da - vid's  
 2. Let us sing the prais - es Ma - ry, cho - sen as bless - ed  
 3. Let us sing the prais - es Ma - ry, wom - an of strong and  
 4. Let us sing the prais - es Ma - ry, pierced by the sword of  
 5. Let us sing th Ma - ry, friend of the poor in

5. ev - 'ry age, she her Sav - ior

(F) Ab (Gsus4) Bbsus4 (G) Bb (C) F (Am) E (F) Ab (G) Bb (C) Eb

1. ho - ly line, she who heard the voice of an an - gel  
 2. from the least, she who heard the song of the an - gels  
 3. stead - fast love. She who heard the Sav - ior of na - tions  
 4. sor - row's pain, she who saw the child of her lov - ing  
 5. ev - 'ry age, she who her Son and her Sav - ior

5. ris'n in glo - ry from the grave. Sin and death

(Dm7) Fm7 (C/E) Eb/G (C) Eb (Bb) Db (Dm) Fm

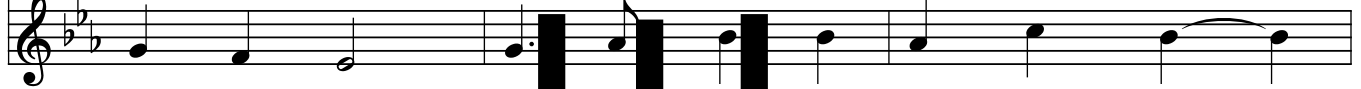
1. tell - ing the plan of God's de - sign, how in wis - dom's  
 2. fill - ing the night with heav - en's peace. When the prom - ised  
 3. held in her arms the Son of God. She who knew the  
 4. nailed on a cross to die in shame. Though his friends would  
 5. ris - en in glo - ry from the grave. Sin and death shall

Text: 98 98 77 88; Dan Schutte, b. 1947.  
 Music: SONG OF MARY; Dan Schutte.  
 Text and music © 1998, Daniel L. Schutte. Published by OCP. All rights reserved.



5. reign no more; Christ has o - pened heav - en's \_\_\_\_\_ door.

(E/G#) (E7) (Am) (F) (C/E) (Dm7) (Gsus4) (G)  
 G/B G7 Cm Ab Eb/G Fm7 Bbsus4 Bb



1. ho - ly sight she woul mot - er heav - en's Christ. \_\_\_\_\_  
 2. time had come she gave birth to God's own Son. \_\_\_\_\_  
 3. Fa - ther's grace taught her Son to know God's face. \_\_\_\_\_  
 4. flee in fear she re - mained for - ev - er near. \_\_\_\_\_  
 5. reign no more; Christ has o pened heav - en's door. \_\_\_\_\_

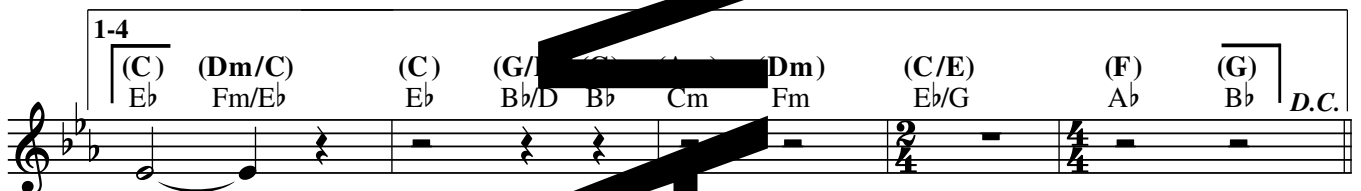


5. Bless - ed name of Ma - ry, she who ev - er trust - ed the love of

(C) (Am) (F) (G) (E/G#) (7) (Am) (F) (C/E) (F) (G)  
 Eb Cm Ab Bb G/B 7 Cm Ab Eb/Gb Ab Bb



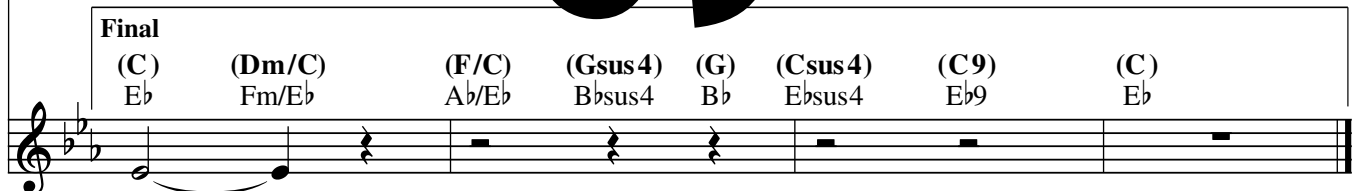
1-5. Bless - ed be the name of \_\_\_\_\_ ry, she who trust - ed the love \_\_\_\_\_ of



1-4. God. \_\_\_\_\_



5. God. \_\_\_\_\_



5. God. \_\_\_\_\_

(C) (Dm/C) (F/C) (Gsus4) (G) (Csus4) (C9) (C)  
 Eb Fm/Eb Ab/Eb Bbsus4 Bb Ebsus4 Eb9 Eb

# SONG OF MARY

*Grand and majestic* (♩ = ca. 96)

**Descant**

5. Let us sing of Ma - ry, friend faith-ful in

**Capo 3:** (C) Eb (Am) Cm (F) A (G) Bb (C) Eb (Dm7) Fm7 (C/E) Eb/G

**Melody**

1. Let us sing the prais - es of Ma - ry, daugh - ter of Da - vid's  
 2. Let us sing the prais - es Ma - ry, cho - sen as bless - ed  
 3. Let us sing the prais - es Ma - ry, wom - an of strong and  
 4. Let us sing the prais - es Ma - ry, pierced by the sword of  
 5. Let us sing th Ma - ry, friend of the poor in

5. ev - 'ry age, she her Sav - ior

(F) Ab (Gsus4) Bbsus4 (G) Bb (C) F (Am) Eb (F) Ab (G) Bb (C) Eb

1. ho - ly line, she who heard the voice of an an - gel  
 2. from the least, she who heard the song of the an - gels  
 3. stead - fast love. She who heard the Sav - ior of na - tions  
 4. sor - row's pain, she who saw the child of her lov - ing  
 5. ev - 'ry age, she who her Son and her Sav - ior

5. ris'n in glo - ry from the grave. Sin and death

(Dm7) Fm7 (C/E) Eb/G (C) Eb (Bb) Db (Dm) Fm

1. tell - ing the plan of God's de - sign, how in wis - dom's  
 2. fill - ing the night with heav - en's peace. When the prom - ised  
 3. held in her arms the Son of God. She who knew the  
 4. nailed on a cross to die in shame. Though his friends would  
 5. ris - en in glo - ry from the grave. Sin and death shall

Text: 98 98 77 88; Dan Schutte, b. 1947.  
 Music: SONG OF MARY; Dan Schutte.  
 Text and music © 1998, Daniel L. Schutte. Published by OCP. All rights reserved.



5. reign no more; Christ has o - pened heav - en's \_\_\_\_\_ door.

(E/G#) (E7) (Am) (F) (C/E) (Dm7) (Gsus4) (G)  
 G/B G7 Cm Ab Eb/G Fm7 Bbsus4 Bb



1. ho - ly sight she woul mot - er heav - en's Christ. \_\_\_\_\_  
 2. time had come she gave birth to God's own Son. \_\_\_\_\_  
 3. Fa - ther's grace taught her Son to know God's face. \_\_\_\_\_  
 4. flee in fear she re - mained for - ev - er near. \_\_\_\_\_  
 5. reign no more; Christ has o pened heav - en's door. \_\_\_\_\_



5. Bless - ed name of Ma - ry, she who ev - er trust - ed the love of

(C) (Am) (F) (G) (E/G#) (7) (Am) (F) (C/E) (F) (G)  
 Eb Cm Ab Bb G/B Fm Cm Ab Eb/Gb Ab Bb



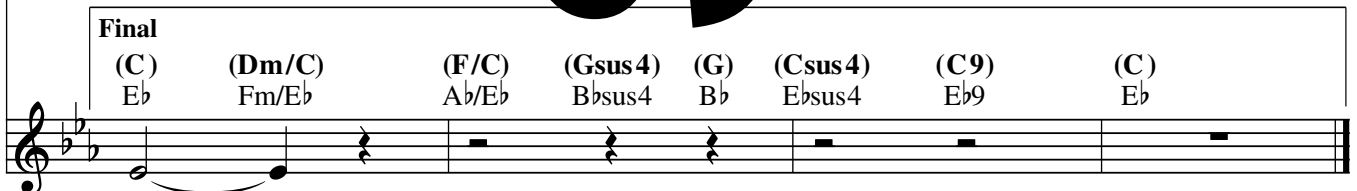
1-5. Bless - ed be the name of \_\_\_\_\_ ry, she who trust - ed the love \_\_\_\_\_ of



1-4. God. \_\_\_\_\_



5. God. \_\_\_\_\_



5. God. \_\_\_\_\_

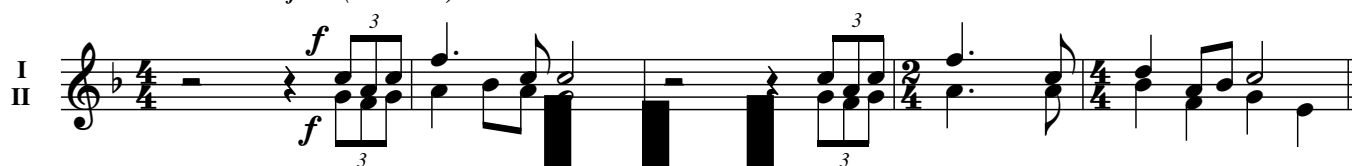
(C) (Dm/C) (F/C) (Gsus4) (G) (Csus4) (C9) (C)  
 Eb Fm/Eb Ab/Eb Bbsus4 Bb Ebsus4 Eb9 Eb

# SONG OF MARY

TRUMPET in B $\flat$  I & II

INTRO *Grand and majestic* ( $\text{♩} = \text{ca. } 96$ )

I II

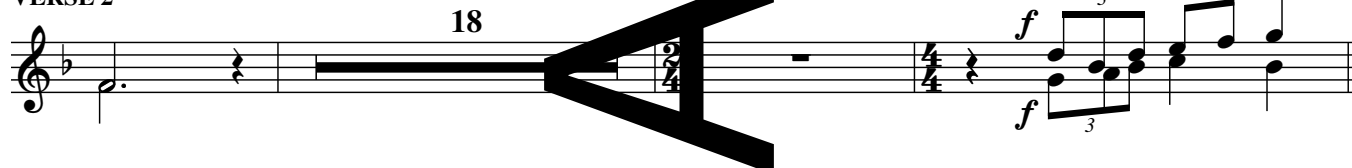


VERSE 1



VERSE 2

18



VERSE 3



Note: Intro is compatible with suggested bracketed Intro on keyboard and guitar accompaniments.

Music: SONG OF MARY; Dan Schutte, b. 1947, © 1998, Daniel L. Schutte. Published by OCP. All rights reserved.

