

# SONG OF SIMEON

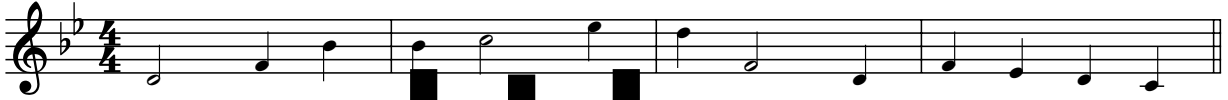
INTRO (♩ = ca. 90)

Capo 1: (Aadd9)  
Bbadd9

(Dsus4/A)  
Ebsus4/Bb

(Aadd9)  
Bbadd9

(G)  
Ab



(A)  
Bb

(Bm)  
Cm

(Gmaj7)  
Abmaj7

(A)  
Bb

Melody

Melody and Harmony for the first line of lyrics. The melody is in the treble clef, and the harmony is in the bass clef. The lyrics are: "Now, O God, let your ser - vant go." The music is in 4/4 time, key of Bb.

Harmony

(Gmaj7)  
Abmaj7

(F#m)  
Gm

(G)  
Ab

(E(no3))  
F(no3)

Melody and Harmony for the second line of lyrics. The melody is in the treble clef, and the harmony is in the bass clef. The lyrics are: "Let me go in peace - cord - ing to your word." The music is in 4/4 time, key of Bb.

(A)  
Bb

(Bm)  
Cm

(Gmaj7)  
Abmaj7

(A)  
Bb

Melody and Harmony for the third line of lyrics. The melody is in the treble clef, and the harmony is in the bass clef. The lyrics are: "For my eyes be - hold your sav - ing work: a". The music is in 4/4 time, key of Bb.

Text: Based on Luke 2:29-32; *Nunc dimittis*; Janèt Sullivan Whitaker, b. 1958.

Music: Janèt Sullivan Whitaker.

Text and music © 2000, Janèt Sullivan Whitaker. Published by OCP Publications. All rights reserved.

(G) Ab (F#m) Gm (A/G) Bb/Ab (G) Ab 1 (E) F

light for all the world, al - le - lu - ia.

Final (G) Ab (F#m7) Gm7

Al - le - lu - ia, al - le -

(Dmaj7) Ebmaj7 (A/G) Bb/Ab (G) Ab

lu - ia, al - le - lu - ia,

(Aadd9) Bbadd9 *dim.* 2 2

al - le - lu - ia.