

SONG OF SIMEON

INTRO (♩ = ca. 90)

Keyboard

B♭add9 E♭sus4/B♭ B♭add9 A♭

B♭ Cm A♭maj7 B♭ A♭maj7

Now, O God, let your ser-vant go. Let me go in

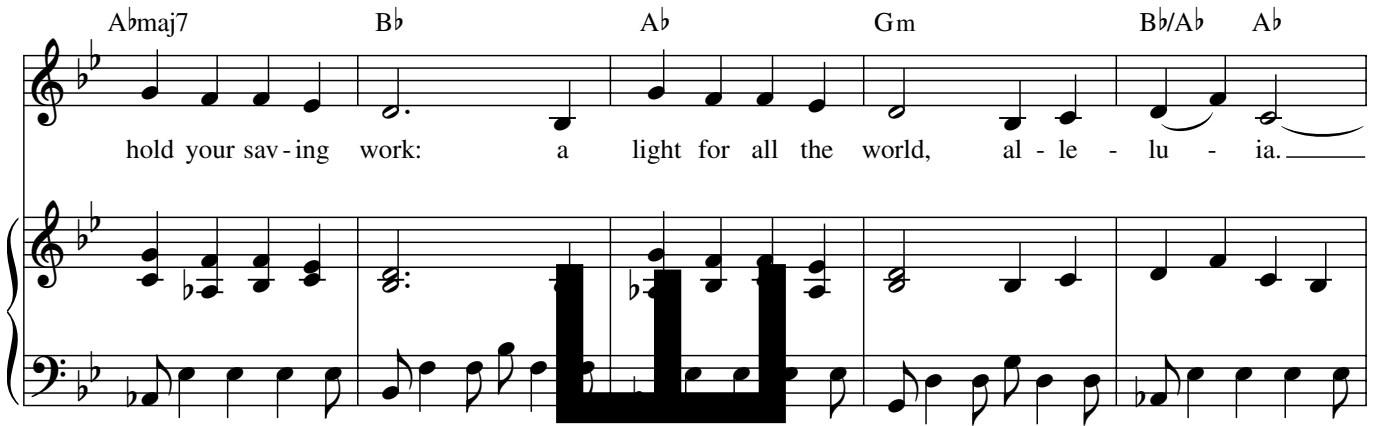
Gm A♭ B♭ Cm

peace ac - cord - ing to y word. For my eyes be -

Text: Based on Luke 2:29-32; *Nunc dimittis*; Janèt Sullivan Whitaker, b. 1958.
Music: Janèt Sullivan Whitaker.
Text and music © 2000, Janèt Sullivan Whitaker. Published by OCP Publications. All rights reserved.

Abmaj7 Bb Ab Gm Bb/Ab Ab

hold your sav - ing work: a light for all the world, al - le - lu - ia.



1 F Final Ab Ebmaj7

Al - le - lu - ia, al - le - lu - ia, al - le -

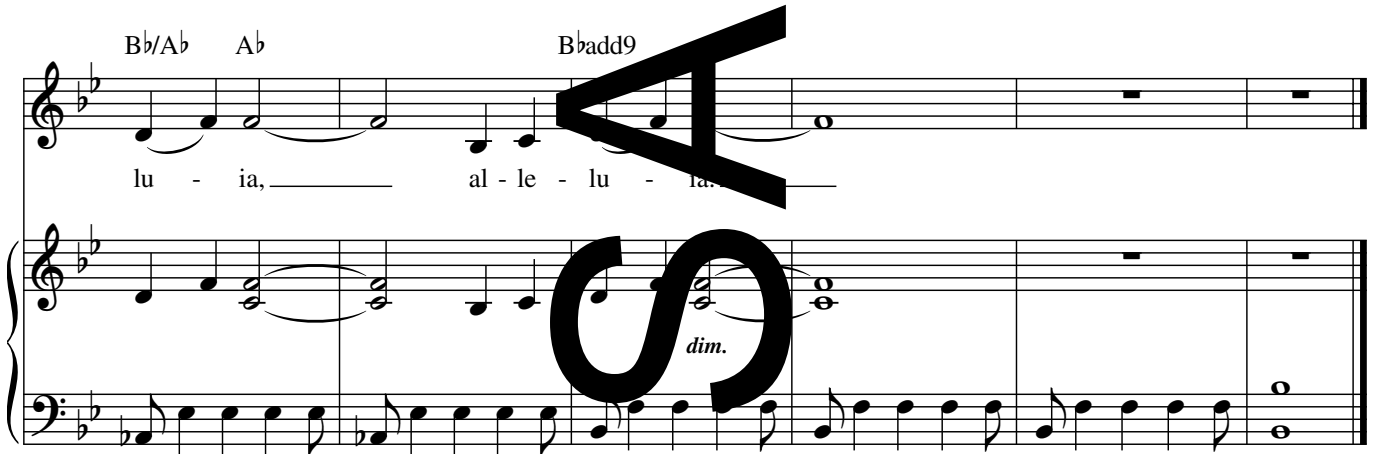
1 Final



Bb/Ab Ab Bbadd9

lu - ia, al - le - lu - ia.

dim.



SONG OF SIMEON

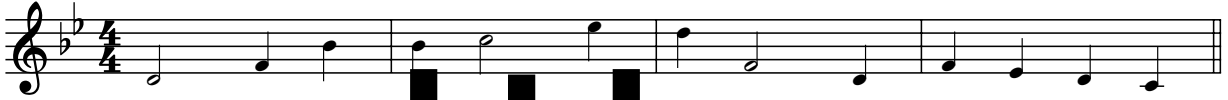
INTRO (♩ = ca. 90)

Capo 1: (Aadd9)
Bbadd9

(Dsus4/A)
Ebsus4/Bb

(Aadd9)
Bbadd9

(G)
Ab



(A)
Bb

(Bm)
Cm

(Gmaj7)
Abmaj7

(A)
Bb

Melody

Melody and Harmony for the first line of lyrics. The melody is in the treble clef and the harmony is in the bass clef. The lyrics are: "Now, O God, let your ser - vant go." The music is in 4/4 time and the key signature has two flats (Bb and Eb).

Harmony

(Gmaj7)
Abmaj7

(F#m)
Gm

(G)
Ab

(E(no3))
F(no3)

Melody and Harmony for the second line of lyrics. The melody is in the treble clef and the harmony is in the bass clef. The lyrics are: "Let me go in peace - cord - ing to your word." The music is in 4/4 time and the key signature has two flats (Bb and Eb).

(A)
Bb

(Bm)
Cm

(Gmaj7)
Abmaj7

(A)
Bb

Melody and Harmony for the third line of lyrics. The melody is in the treble clef and the harmony is in the bass clef. The lyrics are: "For my eyes be - hold your sav - ing work: a". The music is in 4/4 time and the key signature has two flats (Bb and Eb).

Text: Based on Luke 2:29-32; *Nunc dimittis*; Janèt Sullivan Whitaker, b. 1958.

Music: Janèt Sullivan Whitaker.

Text and music © 2000, Janèt Sullivan Whitaker. Published by OCP Publications. All rights reserved.

(G) Ab (F#m) Gm (A/G) Bb/Ab (G) Ab 1 (E) F

light for all the world, al - le - lu - ia.

Final (G) Ab (F#m7) Gm7

Al - le - lu - ia, al - le -

(Dmaj7) Ebmaj7 (A/G) Bb/Ab (G) Ab

lu - ia, al - le - lu - ia,

(Aadd9) Bbadd9 *dim.* 2 2

al - le - lu - ia.

W

L

M

A

SONG OF SIMEON

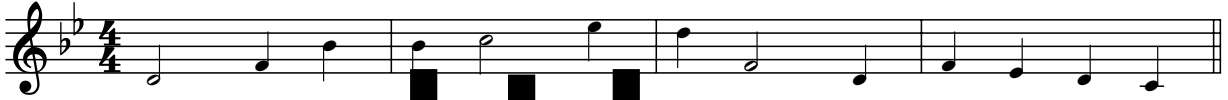
INTRO (♩ = ca. 90)

Capo 1: (Aadd9)
Bbadd9

(Dsus4/A)
Ebsus4/Bb

(Aadd9)
Bbadd9

(G)
Ab



(A)
Bb

(Bm)
Cm

(Gmaj7)
Abmaj7

(A)
Bb

Melody

Melody and Harmony staves for the first line of lyrics. The melody is in the treble clef and the harmony is in the bass clef. The lyrics are: "Now, O God, let your ser - vant go."

(Gmaj7)
Abmaj7

(F#m)
Gm

(G)
Ab

(E(no3))
F(no3)

Melody and Harmony staves for the second line of lyrics. The melody is in the treble clef and the harmony is in the bass clef. The lyrics are: "Let me go in peace - cord - ing to your word."

(A)
Bb

(Bm)
Cm

(Gmaj7)
Abmaj7

(A)
Bb

Melody and Harmony staves for the third line of lyrics. The melody is in the treble clef and the harmony is in the bass clef. The lyrics are: "For my eyes be - hold your sav - ing work: a

Text: Based on Luke 2:29-32; *Nunc dimittis*; Janèt Sullivan Whitaker, b. 1958.

Music: Janèt Sullivan Whitaker.

Text and music © 2000, Janèt Sullivan Whitaker. Published by OCP Publications. All rights reserved.

(G) Ab (F#m) Gm (A/G) Bb/Ab (G) Ab 1 (E) F

light for all the world, al - le - lu - ia.

Final (G) Ab (F#m7) Gm7

Al - le - lu - ia, al - le -

(Dmaj7) Ebmaj7 (A/G) Bb/Ab (G) Ab

lu - ia, al - le - lu - ia,

(Aadd9) Bbadd9 *dim.* 2 2

al - le - lu - ia.

SONG OF SIMEON

CLARINET in B \flat

INTRO (♩ = ca. 90)

The image displays a musical score for a Clarinet in B-flat, titled "SONG OF SIMEON". The score begins with an "INTRO" section, marked with a tempo of approximately 90 beats per minute (♩ = ca. 90). The music is written on six staves in 4/4 time. The first staff contains the introductory melody. The second staff includes a sixteenth-note triplet marked with a "6" and a sixteenth-note group marked with a "4". The third staff features another sixteenth-note triplet marked with a "6". The fourth, fifth, and sixth staves continue the melodic line with various note values and phrasing. A large, bold, black "SAMPLE" watermark is oriented vertically across the center of the page, overlapping the musical staves.

Music: Janèt Sullivan Whitaker, b. 1958, © 2000, Janèt Sullivan Whitaker. Published by OCP Publications. All rights reserved.