

KYRIE ELEISON

(♩ = ca. 54)

F C Gm F/A C7

1, 3. Ky - ri - e e - le i - son. Ky - ri - e e - le - i -
2. Chri - ste e - le i - son. Chri - ste e - le - i -

Detailed description: This system of music is in 3/2 time and B-flat major. It features a treble and bass clef. The treble clef has a key signature of one flat and a common time signature of 8. The bass clef has a key signature of one flat and a common time signature of 8. The music consists of two staves. The first staff has a treble clef and a key signature of one flat. The second staff has a bass clef and a key signature of one flat. The music is written in a simple, homophonic style. The lyrics are: 1, 3. Ky - ri - e e - le i - son. Ky - ri - e e - le - i -; 2. Chri - ste e - le i - son. Chri - ste e - le - i -.

F A/C# Dm Gm Bb F/C C7 F

1, 3. son. Ky - ri - e, Ky - ri - e e - le - i - son.
2. son. Chri - ste, Chri - ste e - le - i - son.

Detailed description: This system of music continues the previous system. It features a treble and bass clef. The treble clef has a key signature of one flat and a common time signature of 8. The bass clef has a key signature of one flat and a common time signature of 8. The music consists of two staves. The first staff has a treble clef and a key signature of one flat. The second staff has a bass clef and a key signature of one flat. The music is written in a simple, homophonic style. The lyrics are: 1, 3. son. Ky - ri - e, Ky - ri - e e - le - i - son.; 2. son. Chri - ste, Chri - ste e - le - i - son.

Music: *Mass of Glory*; Bob Hurd, b. 1950; keyboard acc. by Craig S. Kingsbury, b. 1952, © 1996, 1998, 2000, Bob Hurd. Published by OCP. All rights reserved.

S
A
M
E

KYRIE ELEISON

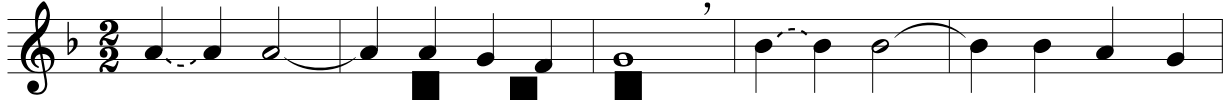
(♩ = ca. 54)

Capo 3: (D)
F

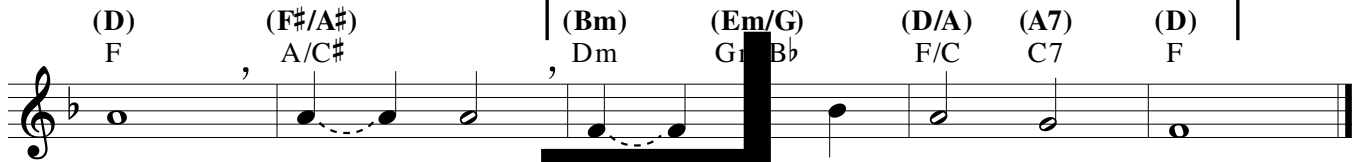
(A)
C

(Em)
Gm

(D/F#) (A7)
F/A C7



1, 3. Ky - ri - e - le i - son. Ky - ri - e e - le - i -
2. Chri - ste - le i - son. Chri - ste e - le - i -



1, 3. son. Ky - ri - e, Ky - ri - e e - le - i - son.
2. son. Chri - ste, Chri - ste e - le - i - son.

Music: *Mass of Glory*; Bob Hurd, b. 1950, © 1996, 1998, 2000, Bob Hurd. Published by OCP. All rights reserved.

SAMPLE

KYRIE ELEISON

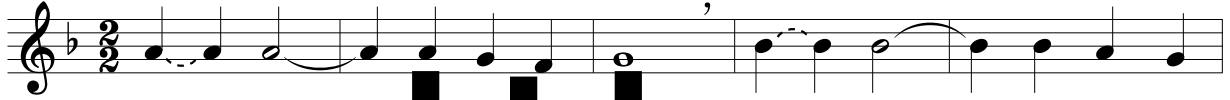
(♩ = ca. 54)

Capo 3: (D)
F

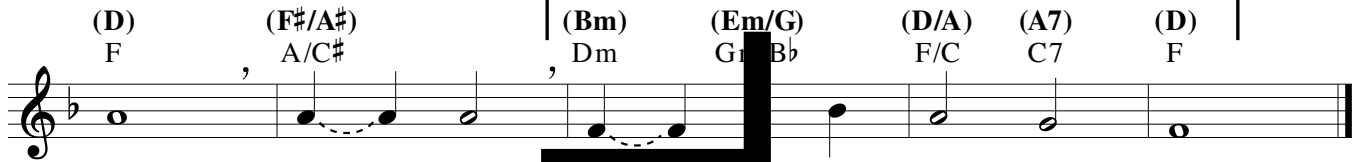
(A)
C

(Em)
Gm

(D/F#) (A7)
F/A C7



1, 3. Ky - ri - e _____ - le i - son. Ky - ri - e _____ e - le - i -
2. Chri - ste _____ - le i - son. Chri - ste _____ e - le - i -



1, 3. son. Ky - ri - e, Ky - ri - e e - le - i - son.
2. son. Chri - ste, Chri - ste e - le - i - son.

Music: *Mass of Glory*; Bob Hurd, b. 1950, © 1996, 1998, 2000, Bob Hurd. Published by OCP. All rights reserved.

SAMPLE