

Chords: Gm7 Cm Fm7 Bb7 | 1-4 Ab Eb | Final Ab Eb Fine

me: I will bring you home. home.

to Verses

VERSES

Chords: Bb Eb D Gm

1. I am the Way, the Truth and the Life.
 2. Have faith in God; have faith in me.
 3. If you love me, keep my commands,
 4. Peace I leave, my peace I give.

Chords: Ab Bb7/Ab 3 Eb/G Cm7 F7 Bb

1. No one comes to the Father except through me.
 2. Know where - ev - er I am, you will al - so be.
 3. I will not leave you or - phed: will re - turn.
 4. God's own Spir - it will guide you through - out your life.

D.S. D.S.

WHERE MY FATHER LIVES

(♩ = ca. 66)

REFRAIN

Capo 1: (Em7)
Fm7

(A sus4) (A7)
Bbsus4 Bb7

(D)
Eb

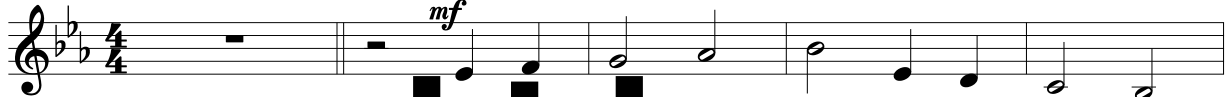
(G)
Ab

(A)
Bb

(D)
Eb

(G)
Ab

(A)
Bb



W

L

E

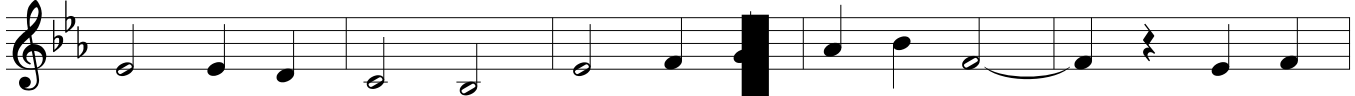
S

A

S

Where my Fa - ther lives there is room for

(D) (D/F#) (G) (A) (G/B) (Em7) (A) (A7)
Eb Eb/G Ab Bb Eb Ab/C Fm7 Bb Bb7



all; there is room for all where my Fa - ther lives, _____ and a

(D) (G) (A) (D) (F#7) (Bm) (D/A) (G)
Eb Ab Bb Eb Ab G7 Cm Eb/Bb Ab



place for you will be _____ there. _____ Come to

(F#m7) (Bm) (Em7) (A7) (G) (D)
Gm7 Cm Fm7 Bb7 Ab Eb



me: I will bring _____ you _____ home. _____

Final
(G) (D)
Ab Eb
to Verses
Fine

VERSES

(A)
Bb

(D)
Eb

(C#)
D

(F#m)
Gm



1. I am the Way, the Truth and the Life.
2. Have faith in God; have faith _____ in me.
3. If you love me and keep my com - mands,
4. Peace _____ I leave _____ my peace _____ I give.

(G) (A7/G) (D/A) (Bm7) (E7) (A)
Ab Bb7/Ab Eb/G Cm7 F7 Bb



1. No one comes to the Fa - ther ex - cept through me.
2. Know wher - ev - er I am, you will al - so be.
3. I will not leave you or - phan'd: I will re - turn.
4. God's own Spir - it will guide you through - out your life.

WHERE MY FATHER LIVES

(♩ = ca. 66)

REFRAIN

Capo 1: (Em7)
Fm7

(A sus4) (A7)
Bbsus4 Bb7

(D)
Eb

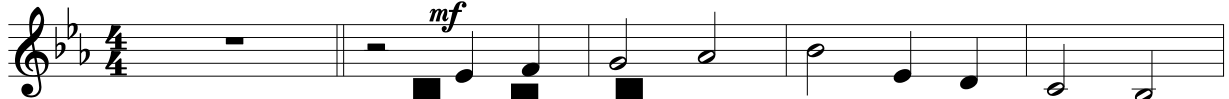
(G)
Ab

(A)
Bb

(D)
Eb

(G)
Ab

(A)
Bb



W

L

E

S

A

S

Where my Fa - ther lives there is room for

(D) (D/F#)
Eb Eb/G

(G) (A)
Ab Bb

(G/B)
Ab/C

(Em7)
Fm7

(A)
Bb

(A7)
Bb7

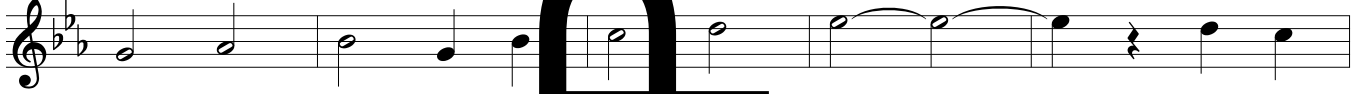


all; there is room for all where my Fa - ther lives, _____ and a

(D) (G) (A) (D)
Eb Ab Bb Eb

(A) (F#7)
Ab G7

(Bm) (D/A) (G)
Cm Eb/Bb Ab



place for you will be _____ there. _____ Come to

(F#m7) (Bm)
Gm7 Cm

(Em7) (A7)
Fm7 Bb7

(G)
Ab

(D)
Eb

to Verses

Final

(G)
Ab

(D)
Eb

Fine



me: I will bring _____ you _____ home. _____

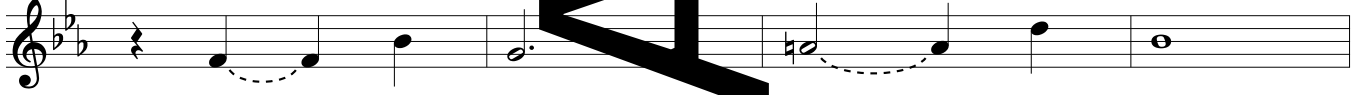
VERSES

(A)
Bb

(D)
Eb

(C#)
D

(F#m)
Gm



1. I am the Way, the Truth and the Life.
2. Have faith in God; have faith _____ in me.
3. If you love me and keep my com - mands,
4. Peace _____ I leave _____ my peace _____ I give.

(G)
Ab

(A7/G)
Bb7/Ab

(D/A)
Eb/G

(Bm7)
Cm7

(E7)
F7

(A)
Bb



1. No one comes to the Fa - ther ex - cept through me.
2. Know wher - ev - er I am, you will al - so be.
3. I will not leave you or - phan'd: I will re - turn.
4. God's own Spir - it will guide you through - out your life.

D.S.

WHERE MY FATHER LIVES

SOLO INSTRUMENT

(♩ = ca. 66)

REFRAIN

Musical score for the Refrain section. It consists of four staves of music in G major, 4/4 time. The first staff begins with a rest followed by a melodic line starting on G4. The second staff continues the melody with a *mf* dynamic. The third staff features a *cresc.* marking and ends with a *dim.* marking. The fourth staff includes a first ending bracket labeled '1-4' that leads 'to Verses', and a 'Final' section ending with a *Fine* marking. Dynamics include *dim.* and *pp*.

VERSES 1-4

Musical score for Verses 1-4. It consists of two staves of music in G major, 4/4 time. The first staff starts with a *mp* dynamic and includes a *cresc.* marking. The second staff begins with a *mf* dynamic and ends with a *D.S.* (Da Capo) marking. Dynamics include *dim.* and *p*.

Music: M.D. Ridge; arr. by Paul Inwood, b. 1947, © 2003, 2005, Paul Inwood and M.D. Ridge. Published by OCP. All rights reserved.

W
A
S