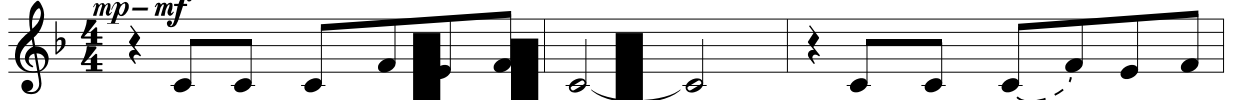


ANG KATAWAN NI KRISTO

(Behold the Body of Christ)

VERSES (♩ = ca. 96)

Capo 3: (Dadd9) (D6sus4) (Dadd9) (D6sus4) (Dadd9) (D6sus4)
 Fadd9 F6sus4 Fadd9 F6sus4 Fadd9 F6sus4



1. In the pres - ence of our God, as we gath - er here in
 We have come to break the bread we have come to share our
 2. When we gath - er in our homes, through our prayers and our
 In the house-hold of the Lord, where we come to share the
 3. In the pres - ence of our God, by the jus - tice that is

(A/C#) (A) (Bm) (Dsus4) (D)
 C/E C Dm Fsus4 F



1. Christ, feel the Spir it breathe up - on us, the
 lives. Let us bring these fruits to the ta - ble, the
 2. meals, we are fed and nour - ished to - geth - er, our
 meal, we are fed the words of our Sav - ior, one
 3. shown, we will build dom to - geth - er; the

(Gadd9) (D/F#) (G6) (A6sus4) (A) (Cadd9) (C) (Asus4) (A)
 Bbadd9 F/A Bb Csus4 C Ebadd9 Eb Csus4 C



1. breath of life, graced and di - vine
 love of God, yours and
 2. fam - i - lies, bro - ken and blessed.
 fam - i - ly, strength-ened and
 3. love of Christ giv - en to
 1. mine!
 2. healed.
 3. all!

REFRAIN

(D) (Em/D) (D) (A) (A7)
 F Gm/F F C C7



Ang ka - ta - wan ni Kris - to, ang ka - ta - wan ni

Text: Ricky Manalo, CSP, b. 1965, and Pia de Leon, © 2003, Ricky Manalo, CSP, and Pia de Leon. Published by OCP. All rights reserved.
 Music: Ricky Manalo, © 2003, Ricky Manalo, CSP. Published by OCP. All rights reserved.

(G/D) (D) (D7) (G) (A/G) (F#m7) (Bm7) (Em7) (A7)
 Bb/F F F7 Bb C/Bb Am7 Dm7 Gm7 C7

Kris - to. Be - hold, the Bod - y of Christ! Je - sus, our Sav - ior and

(D) (D7) (G) (A/G) (F#m7) (Bm7) (Em7) (Asus4) (A7)
 F F7 Bb C/Bb Am7 Dm7 Gm7 Csus4 C7

Life! Re - joice, O Peo - ple of God! We are the Bod - y of

1, 2 1st time: D.C. 3
 2nd time: to Bridge

(D) (A7sus4) (D) (D6sus4) (Bm) (Gadd9) (Aadd9) (A7) (D) (D7)
 F C7sus4 F F6sus4 Dm Badd9 Cadd9 C7 F F7

Christ! Christ! Be -

Final

(Dadd9) (D6sus4) (Dadd9) (D6sus4) (Bm) (Gadd9) (Aadd9) (A7) (D)
 Fadd9 F6sus4 Fadd9 F6sus4 Dm Badd9 Cadd9 C7 F

Christ! Fine

BRIDGE

(G add9) (A/G) (D/F#) (Em7) (A7sus4) (A7) (D) (G/D) (D7)
 Bbadd9 C/Bb F/A Dm7 C7sus4 C7 F Bb/F F7

mf

Is not the meal that we bless and share com - mu - nion in the life of Christ? One

(G) (A/G) (D/F#) (Bm7) (Em7) (C) (G/B) (Asus4) (A)
 Bb C/Bb F/A Dm7 Gm7 Eb Bb/D Csus4 C

bread, one bless - ing, one cup make us one bod - y in our Lord. D.C.