

ANIMA CHRISTI

REFRAIN (♩ = ca. 80)

Melody

Keyboard

E F#m/E B7/E E C#m7 F#m7/C#

Je - sus, Je - sus, may all that is you be

Esus2/B E/B A Amaj7 E (♩) (♩) to Verses (Fine)

pres - ent in me, low in - to me. (6. But) (8. Keep)

VERSE 1

C#m Amaj7/C# C# Amaj7/C# B D.C.

1. May your bod - y and blood be my food and drink.

Text: *Anima Christi (Soul of Christ)*; tr. by David Fleming, SJ, © David Fleming, SJ. All rights reserved. Used with permission.
Music: Suzanne Toolan, RSM, b. 1927, © 2003, Suzanne Toolan, RSM. Published by OCP. All rights reserved.

VERSES 2, 4

Amaj7 F#m/A 3 E/G# A/F# C#m/F# B D.C.

2. May your pas - sion and death be my strength and life.
 4. May the shel - ter I seek be the shad - ow of your cross.

VERSE 3

C#m Amaj7/C# 3 C#m7 A/C# Amaj7/C# B sus4 B D.C.

3. Je - sus, with you at my side e - nough has been giv - en.

VERSES 5, 7

C#m Amaj7/C# 3 C#m7 Amaj7/C# B sus4 B D.C.

5. Let me not run from your love, the love which you of - fer.
 7. On each of my days, shed your light and your love.

VERSES 6, 8

Amaj7 F#m/A E/G# A/F# C#m/F# B D.C.

6. But hold me safe from the forces of evil.
8. Keep calling to me until that day comes.

D.C.

VERSE 9

C#m Amaj7/C# C#m7 Amaj7/C# Bsus4 B D.C.

9. When, with your saints, I may praise you forever.

D.C.

VERSE 10

C#m D#o/C# C#m A F#m7 B D.C.

10. A - men. - men.

D.C.

ANIMA CHRISTI

REFRAIN (♩ = ca. 80)

Capo 2: (D) E (Em/D) F#m/E (A7/D) B7/E (D) E (Bm7) C#m7 (Em7/B) F#m7/C#

Je - sus, Je - sus, may all that is you be

(Dsus2/A) Esus2/B (D/A) E/B (G) A (Gmaj7) Amaj7 (D) E (6) (8) to Verses (Fine)

pres - ent in me, flow in - to me. (6. But) (8. Keep)

VERSE 1

(Bm) C#m (Gmaj7/B) Amaj7/C# (Bm7) (Gmaj7/B) Amaj7/C# (A) B D.C.

1. May your bod - y and blood be my food and drink.

VERSES 2, 4

(Gmaj7) Amaj7 (Em/G) F#m/A (D/F#) E/G# (G/E) F# (Bm/E) C#m/F# (A) B D.C.

2. May your pas - sion and death be my strength and life.
4. May the shel - ter I seek be the shad - ow of your cross.

VERSE 3

(Bm) C#m (Gmaj7/B) Amaj7/C# (Bm7) C#m7 (G/B) A/C# (Gmaj7/B) Amaj7/C# (Asus4) Bsus4 (A) B D.C.

3. Je - sus, with you at my side, e - nough has been giv - en.

Text: *Anima Christi (Soul of Christ)*; tr. by David Fleming, SJ, © David Fleming, SJ. All rights reserved. Used with permission.
Music: Suzanne Toolan, RSM, b. 1927, © 2003, Suzanne Toolan, RSM. Published by OCP. All rights reserved.

VERSES 5, 7

(Bm) (Gmaj7/B) (Bm7) (Gmaj7/B) (Asus4) (A)
 C#m Amaj7/C# C#m7 Amaj7/C# Bsus4 B D.C.

5. Let me not run from your love, the love which you of - fer.
 7. On each of my dy - ings, shed your light and your love.

VERSES 6, 8

(Gmaj7) (Em/B) (G/E) (Bm/E) (A)
 Amaj7 F#m/A E/G# A/F# C#m/F# B D.C.

6. But hold me safe from the forc - es of e - vil.
 8. Keep call - ing to me un - til that day comes.

VERSE 9

(Bm) (Gmaj7/B) (Bm7) (Gmaj7/B) (Asus4) (A)
 C#m Amaj7/C# C#m7 Amaj7/C# Bsus4 B D.C.

9. When, with your saints, may praise you for - ev - er.

VERSE 10

(Bm) (C#°/B) (Bm) (G) (Em7) (A)
 C#m D#°/C# C#m A F#m7 B D.C.

10. A - men. A - men.

W
 L
 R
 M
 A
 S

ANIMA CHRISTI

REFRAIN (♩ = ca. 80)

Capo 2: (D) E (Em/D) F#m/E (A7/D) B7/E (D) E (Bm7) C#m7 (Em7/B) F#m7/C#

Je - sus, Je - sus, may all that is you be

(Dsus2/A) Esus2/B (D/A) E/B (G) A (Gmaj7) Amaj7 (D) E (6) (8) to Verses (Fine)

pres - ent in me, flow in - to me. (6. But) (8. Keep)

VERSE 1

(Bm) C#m (Gmaj7/B) Amaj7/C# (Bm7) (Gmaj7/B) Amaj7/C# (A) B D.C.

1. May your bod - y and blood be my food and drink.

VERSES 2, 4

(Gmaj7) Amaj7 (Em/G) F#m/A (D/F#) E/G# (G/E) F# (Bm/E) C#m/F# (A) B D.C.

2. May your pas - sion and death be my strength and life.
4. May the shel - ter I seek be the shad - ow of your cross.

VERSE 3

(Bm) C#m (Gmaj7/B) Amaj7/C# (Bm7) C#m7 (G/B) A/C# (Gmaj7/B) Amaj7/C# (Asus4) Bsus4 (A) B D.C.

3. Je - sus, with you at my side, e - nough has been giv - en.

Text: *Anima Christi (Soul of Christ)*; tr. by David Fleming, SJ, © David Fleming, SJ. All rights reserved. Used with permission.
Music: Suzanne Toolan, RSM, b. 1927, © 2003, Suzanne Toolan, RSM. Published by OCP. All rights reserved.

VERSES 5, 7

(Bm) (Gmaj7/B) (Bm7) (Gmaj7/B) (Asus4) (A)
 C#m Amaj7/C# C#m7 Amaj7/C# Bsus4 B D.C.

5. Let me not run from your love, the love which you of - fer.
 7. On each of my dy - ings, shed your light and your love.

VERSES 6, 8

(Gmaj7) (Em/B) (G/E) (Bm/E) (A)
 Amaj7 F#m/A E/G# A/F# C#m/F# B D.C.

6. But hold me safe from the forc - es of e - vil.
 8. Keep call - ing to me un - til that day comes.

VERSE 9

(Bm) (Gmaj7/B) (Bm7) (Gmaj7/B) (Asus4) (A)
 C#m Amaj7/C# C#m7 Amaj7/C# Bsus4 B D.C.

9. When, with your saints, may praise you for - ev - er.

VERSE 10

(Bm) (C#°/B) (Bm) (G) (Em7) (A)
 C#m D#°/C# C#m A F#m7 B D.C.

10. A - men. A - men.

W
 L
 R
 M
 A
 S

ANIMA CHRISTI

SOLO INSTRUMENT

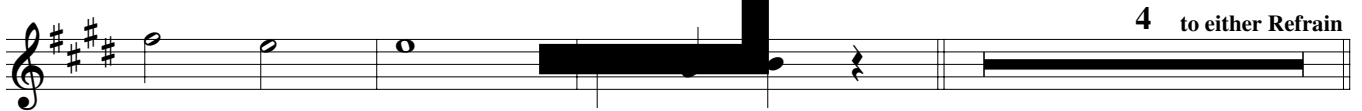
REFRAIN (♩ = ca. 80)



VERSE 1



VERSES 2-10



FINAL REFRAIN



Music: Suzanne Toolan, RSM, b. 1927, © 2003, Suzanne Toolan, RSM. All rights reserved.

CELLO

REFRAIN (♩ = ca. 80)



VERSE 1



VERSES 2-10



FINAL REFRAIN



Music: Suzanne Toolan, RSM, b. 1927, © 2003, Suzanne Toolan, RSM. Published by OCP. All rights reserved.