

# SPRINGS OF WATER, BLESS THE LORD

SOLO INSTRUMENT I

INTRO (♩. = ca. 70)



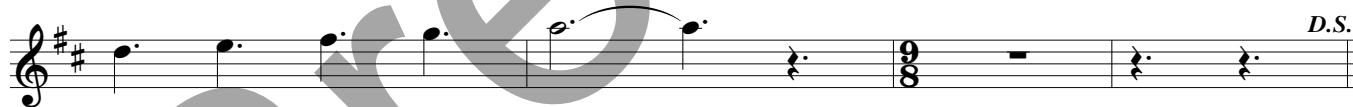
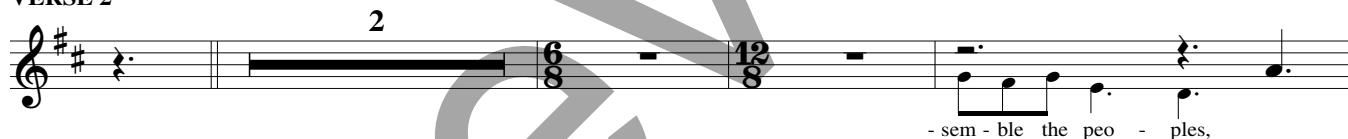
REFRAIN



VERSE 1



VERSE 2



VERSE 3



CODA



Note: Intro is compatible with suggested bracketed Intro on keyboard and guitar accompaniments.

Music: Based on ASSURANCE by Phoebe P. Knapp, 1839-1908; adapt. and arr. by Lynn Trapp, b. 1963, © 2005, Lynn Trapp. Published by OCP. All rights reserved.

SPRINGS OF WATER, BLESS THE LORD (SOLO INSTRUMENT II)

SOLO INSTRUMENT II

INTRO (♩. = ca. 70)

REFRAIN

to Verses  
last time to Coda ⊕

VERSE 1

tem - ple, the side of the Lord.

VERSE 2

- sem - ble the peo - ples,

VERSE 3

give will be -

⊕ CODA

Note: Intro is compatible with suggested bracketed Intro on keyboard and guitar accompaniments.

Music: Based on ASSURANCE by Phoebe P. Knapp, 1839–1908; adapt. and arr. by Lynn Trapp, b. 1963, © 2005, Lynn Trapp. Published by OCP. All rights reserved.

SPRINGS OF WATER, BLESS THE LORD (SOLO INSTRUMENT in B♭ I)

SOLO INSTRUMENT in B♭ I

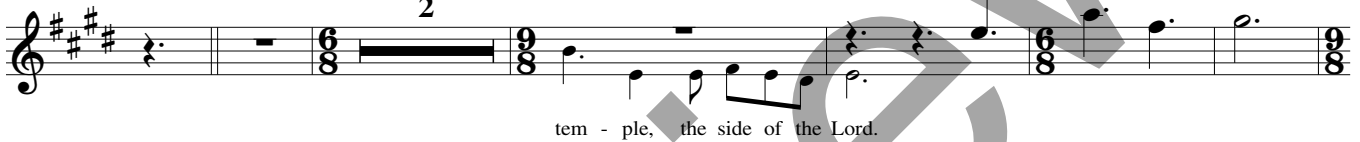
INTRO (♩. = ca. 70)



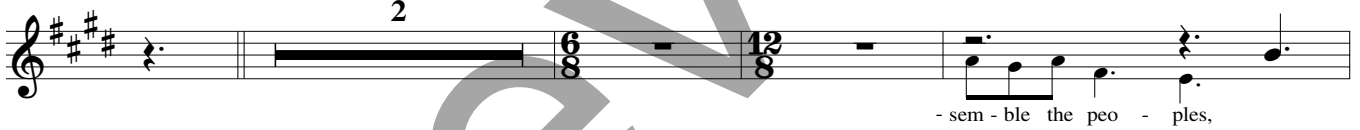
REFRAIN



VERSE 1



VERSE 2



VERSE 3



CODA



Note: Intro is compatible with suggested bracketed Intro on keyboard and guitar accompaniments.

Music: Based on ASSURANCE by Phoebe P. Knapp, 1839–1908; adapt. and arr. by Lynn Trapp, b. 1963, © 2005, Lynn Trapp. Published by OCP. All rights reserved.

Edition #93654

SPRINGS OF WATER, BLESS THE LORD (SOLO INSTRUMENT in B♭ II)

SOLO INSTRUMENT in B♭ II

INTRO (♩. = ca. 70)

REFRAIN

to Verses  
last time to Coda

VERSE 1

tem - ple, the side of the Lord.

VERSE 2

- sem - ble the peo - ples,

VERSE 3

give will be -

CODA

Note: Intro is compatible with suggested bracketed Intro on keyboard and guitar accompaniments.

Music: Based on ASSURANCE by Phoebe P. Knapp, 1839–1908; adapt. and arr. by Lynn Trapp, b. 1963, © 2005, Lynn Trapp. Published by OCP. All rights reserved.