

SPRINGS OF WATER, BLESS THE LORD

REFRAIN (♩. = ca. 70)

D G/D D

Springs of wa - ter, bless the Lord! Give him

Bm7 A E A D G/D

glo - ry and praise for - ev - er. Springs of wa - ter, bless the

D Bm7 Em D A7 D to Verses last time to Coda ⊕

Lord! Give him glo - ry and praise for - ev - er.

Text: Lynn Trapp, b. 1963.
Music: Based on ASSURANCE by Phoebe P. Knapp, 1839-1908; adapt. and arr. by Lynn Trapp.
Text and music © 2005, Lynn Trapp. Published by OCP. All rights reserved.

VERSE 1

A Bm A Bm E A A7 D/F# Em/G

1. I saw wa - ter rush - ing forth from the right side of the

A Bm Em/G A D Bm G A

1. tem - ple, the side of the Lord. And all to whom this

D Bm7 E A

1. wa - ter came were saved, and they shall sing:

D G D Bm Em/G D A7 D D.C.

1. Al - le - lu - ia! Al - le - lu - ia! Al - le - lu - ia!

SPRINGS OF WATER, BLESS THE LORD, cont. (3)

VERSE 2

Bm Em/G A7 D F#m Em A

2. "On the day of my res - ur - rec - tion," says the Lord,

D Bm Gmaj7 D/F# Em7 A Bm7 D Em/A D/A A7

2. "I will gath - er na - tions, as - sem - ble the peo - ples, and pour clean wa - ter

Asus4 A Bm Em7 D/A A7 D D.C.

2. o - ver them." Al - le - lu - ia! Al - le - lu - ia!

VERSE 3

D A7 D/A F#m/A G

3. Je - sus stood be - fore them and cried out: "If an - y thirst

F#m/A G Asus4 A D/F# Em/G F#m/A

3. let them come to me; the wa - ter I shall give will be -

Em7 A A7 Bm/F# A7 G/D

3. come a spring — with - in, well - ing up to e - ter - nal

A/C# D Em7 D/F# G A D *D.C. al Coda*

3. life." Al - le - lu - ia! Al - le - lu - ia!

⊕ CODA

A D G D

Give him glo - ry and praise — for - ev - er. Give him

G D/F# A/E E A A7 D G/D

glo - ry and praise for - ev - er. Give — him glo - ry and praise — for -

D Em/G D A7 D

ev - er. Al - le - lu - ia! Al - le - lu - ia!

SPRINGS OF WATER, BLESS THE LORD

REFRAIN (♩. = ca. 70)

D G/D D

Springs of wa - ter, bless the Lord! Give him

Bm7 A E A D G/D

glo - ry and praise for - ev - er. Springs of wa - ter, bless the

D Bm7 Em D A7 D

Lord! Give him glo - ry and praise for - ev - er.

to Verses
last time to Coda ⊕

VERSE 1

A Bm A Bm E A A7 D/F# Em/G A Bm

1. I saw wa - ter rush - ing forth from the right side of the tem - ple, the

Em/G A D Bm G A D Bm7 E A

1. side of the Lord. And all to whom this wa - ter came were saved, and they shall

D G D Bm Em/G D A7 D D.C.

1. sing: Al - le - lu - ia! Al - le - lu - ia! Al - le - lu - ia!

Text: Lynn Trapp, b. 1963.
 Music: Based on ASSURANCE by Phoebe P. Knapp, 1839–1908; adapt. and arr. by Lynn Trapp.
 Text and music © 2005, Lynn Trapp. Published by OCP. All rights reserved.

VERSE 2

Bm Em/G A7 D F#m Em A

2. "On the day of my res - ur - rec - tion," says the Lord,

D Bm Gmaj7 D/F# Em7 A Bm7 D Em/A D/A A7

2. "I will gath - er na - tions, as - sem - ble the peo - ples, and pour clean wa - ter

Asus4 A Bm Em7 D/A A7 D D.C.

2. o - ver them." Al - le - lu - ia! Al - le - lu - ia!

VERSE 3

D A7 D/A F#m/A G F#m/A

3. Je - sus stood be - fore them and cried out: "If an - y thirst let them

G Asus4 A D/F# Em/G F#m/A Em7

3. come to me; the wa - ter I shall give will be - come a spring with -

A A7 Bm/F# A7 G/D A/C# D Em7 D/F# G A D D.C. at Coda

3. in, well - ing up to e - ter - nal life." Al - le - lu - ia! Al - le - lu - ia!

⊕ CODA

A D G D G D/F# A/E E A

Give him glo - ry and praise for - ev - er. Give him glo - ry and praise for - ev - er.

A7 D G/D D Em/G D A7 D

Give him glo - ry and praise for - ev - er. Al - le - lu - ia! Al - le - lu - ia!

SPRINGS OF WATER, BLESS THE LORD

REFRAIN (♩. = ca. 70)

D G/D D

Springs of wa - ter, bless the Lord! Give him

Bm7 A E A D G/D

glo - ry and praise for - ev - er. Springs of wa - ter, bless the

D Bm7 Em D A7 D

Lord! Give him glo - ry and praise for - ev - er.

to Verses
last time to Coda ⊕

VERSE 1

A Bm A Bm E A A7 D/F# Em/G A Bm

1. I saw wa - ter rush - ing forth from the right side of the tem - ple, the

Em/G A D Bm G A D Bm7 E A

1. side of the Lord. And all to whom this wa - ter came were saved, and they shall

D G D Bm Em/G D A7 D D.C.

1. sing: Al - le - lu - ia! Al - le - lu - ia! Al - le - lu - ia!

Text: Lynn Trapp, b. 1963.
Music: Based on ASSURANCE by Phoebe P. Knapp, 1839–1908; adapt. and arr. by Lynn Trapp.
Text and music © 2005, Lynn Trapp. Published by OCP. All rights reserved.

VERSE 2

Bm Em/G A7 D F#m Em A

2. "On the day of my res - ur - rec - tion," says the Lord,

D Bm Gmaj7 D/F# Em7 A Bm7 D Em/A D/A A7

2. "I will gath - er na - tions, as - sem - ble the peo - ples, and pour clean wa - ter

Asus4 A Bm Em7 D/A A7 D D.C.

2. o - ver them." Al - le - lu - ia! Al - le - lu - ia!

VERSE 3

D A7 D/A F#m/A G F#m/A

3. Je - sus stood be - fore them and cried out: "If an - y thirst let them

G Asus4 A D/F# Em/G F#m/A Em7

3. come to me; the wa - ter I shall give will be - come a spring with -

A A7 Bm/F# A7 G/D A/C# D Em7 D/F# G A D D.C. at Coda

3. in, well - ing up to e - ter - nal life." Al - le - lu - ia! Al - le - lu - ia!

⊕ CODA

A D G D G D/F# A/E E A

Give him glo - ry and praise for - ev - er. Give him glo - ry and praise for - ev - er.

A7 D G/D D Em/G D A7 D

Give him glo - ry and praise for - ev - er. Al - le - lu - ia! Al - le - lu - ia!

SPRINGS OF WATER, BLESS THE LORD

SOLO INSTRUMENT I

INTRO (♩. = ca. 70)



REFRAIN



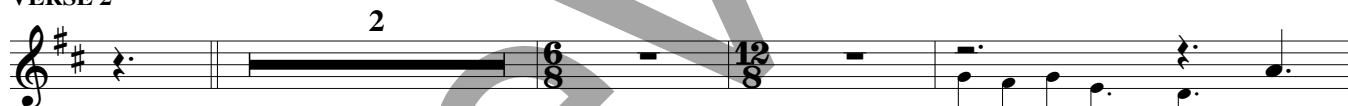
VERSE 1



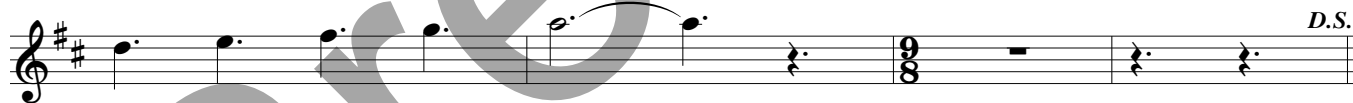
tem - ple, the side of the Lord.



VERSE 2



- sem - ble the peo - ples,



VERSE 3



let them come to me, the



⊕ CODA



Note: Intro is compatible with suggested bracketed Intro on keyboard and guitar accompaniments.

Music: Based on ASSURANCE by Phoebe P. Knapp, 1839-1908; adapt. and arr. by Lynn Trapp, b. 1963, © 2005, Lynn Trapp. Published by OCP. All rights reserved.

SPRINGS OF WATER, BLESS THE LORD (SOLO INSTRUMENT II)

SOLO INSTRUMENT II

INTRO (♩. = ca. 70)

REFRAIN

to Verses
last time to Coda ⊕

VERSE 1

2

tem - ple, the side of the Lord.

D.S.

VERSE 2

2

- sem - ble the peo - ples,

D.S.

VERSE 3

2 3

give will be -

D.S. at Coda

⊕ CODA

Note: Intro is compatible with suggested bracketed Intro on keyboard and guitar accompaniments.

Music: Based on ASSURANCE by Phoebe P. Knapp, 1839–1908; adapt. and arr. by Lynn Trapp, b. 1963, © 2005, Lynn Trapp. Published by OCP. All rights reserved.

SPRINGS OF WATER, BLESS THE LORD (SOLO INSTRUMENT in B♭ I)

SOLO INSTRUMENT in B♭ I

INTRO (♩. = ca. 70)

REFRAIN

VERSE 1

VERSE 2

VERSE 3

CODA

Note: Intro is compatible with suggested bracketed Intro on keyboard and guitar accompaniments.

Music: Based on ASSURANCE by Phoebe P. Knapp, 1839–1908; adapt. and arr. by Lynn Trapp, b. 1963, © 2005, Lynn Trapp. Published by OCP. All rights reserved.

Edition #93655

SPRINGS OF WATER, BLESS THE LORD (SOLO INSTRUMENT in B♭ II)

SOLO INSTRUMENT in B♭ II

INTRO (♩. = ca. 70)

REFRAIN

to Verses
last time to Coda ⊕

VERSE 1

tem - ple, the side of the Lord.

VERSE 2

- sem - ble the peo - ples,

VERSE 3

give will be -

⊕ CODA

Note: Intro is compatible with suggested bracketed Intro on keyboard and guitar accompaniments.

Music: Based on ASSURANCE by Phoebe P. Knapp, 1839–1908; adapt. and arr. by Lynn Trapp, b. 1963, © 2005, Lynn Trapp. Published by OCP. All rights reserved.