

PSALM 19: YOUR WORDS, LORD, ARE SPIRIT AND LIFE

REFRAIN: (♩ = 80-84) 1st time: Cantor/All; thereafter: All

Melody

Keyboard

(Cantor) F C/E Dsus4 Dm B♭maj7

Your words, Lord, are Spirit, Spirit and

Dm (All) [Dm] F C/E Dsus4 Dm

life. Your words, Lord, are Spirit,

B♭maj7 Fsus4 F Fsus4 F

Spirit and life (4. They) Fine

Fine


Text: John 6:63c; Psalm 19:8, 9, 10, 11, 15. Refrain text © 1969, 1981, 1997, ICEL. All rights reserved. Used with permission.
Verses text © 1970, 1997, 1998, CCD. All rights reserved. Used with permission.

Music: Bob Hurd, b. 1950; keyboard acc. by Rick Modlin, b. 1966, © 1999, Bob Hurd. Published by OCP. All rights reserved.

23026-Z1

VERSE 1

Bbmaj7/D C/E F Fmaj7/A Bb F



1. The law of the LORD is per - fect, re - fresh - ing the

VERSE 2



2. The pre-cepts of the LORD are right, re - joic - ing the

VERSE 3



3. The fear of the LORD is pure, en - dur - ing for -

VERSE 4



4. They are more pre - cious than gold, than a heap of pur - est

VERSE 5



5. Let the words of mouth and the thought of my



Piano accompaniment for the verses, including treble and bass staves.

VERSES

PSALM 19: YOUR WORDS, LORD, ARE SPIRIT AND LIFE, cont. (3)

C Gm A/C# A7 Dm Gm/Bb

1. soul. The de - cree of the LORD is trust - wor - thy, giv - ing

2. heart; the com - mand of the LORD is clear,

3. ev - er; the stat - utes of the LORD are true,

4. gold; sweet - er al - so than syr - up or

5. heart find fa - vor be - fore you, O LORD, my

SINGS

1. wis - dom _____ to the sim - ple. *D.C.*

2. en - light - 'ning the eye. *D.C.*

3. all of them just. *D.C.*

4. hon - ey _____ from the comb. *D.C.*

5. rock and my re - deem - er. *D.C. al fine*

D.C.

S

PSALM 19: YOUR WORDS, LORD, ARE SPIRIT AND LIFE

REFRAIN: (♩ = 80-84) 1st time: Cantor/All; thereafter: All

Capo 3: (D) (A/C#) (Bsus4) (Bm) (Gmaj7) (Bm) (Bm) (Bm)
F C/E Dsus4 Dm Bbmaj7 Dm Dm

(Cantor) (All)

Your words, Lord, are Spirit and life. Your words, Lord, are Spirit and life. (4. They)

(D) (A/C#) (Bsus4) (Bm) (Gmaj7) (Dsus4) (D) (Dsus4) (D)
F C/E Dsus4 Dm Bbmaj7 Fsus4 F Fsus4 F

Fine

VERSE 1

(Gmaj7/B) (A/C#) (D) (Dmaj7/F#) (G) (D) (A) (Em)
Bbmaj7/D C/E F A Bb F C Gm

1. The law of the LORD is perfect, fresh - ing the soul. The de - cree of the LORD is trust - wor - thy, giv - ing wis - dom to the sim - ple.

(F#7) (Bm) (Em/G) (D) (Asus4) (A) (Asus4) (A)
A/C# A7 Dm Gm/Bb F/C Csus4 C Csus4 C

D.C.

VERSE 2

(Gmaj7/B) (A/C#) (D) (Dmaj7/F#) (G) (D) (A)
Bbmaj7/D C/E F Fmaj7/A Bb F C

2. The pre - cepts of the LORD are right, re - joic - ing the heart; the com - mand of the LORD is clear, en - light - 'ning the eye.

(Em) (F#7) (Bm) (Em/G) (D/A) (Asus4) (A) (Asus4) (A)
Gm A/C# A7 Dm Gm/Bb F/C Csus4 C Csus4 C

D.C.


Text: John 6:63c; Psalm 19:8, 9, 10, 11, 15. Refrain text © 1969, 1981, 1997, ICEL. All rights reserved. Used with permission. Verses text © 1970, 1997, 1998, CCD.

All rights reserved. Used with permission.

Music: Bob Hurd, b. 1950, © 1999, Bob Hurd. Published by OCP. All rights reserved.


VERSE 3

(Gmaj7/B) (A/C#) (D) (Dmaj7/F#) (G) (D) (A)
 Bbmaj7/D C/E F Fmaj7/A Bb F C



3. The fear of the LORD is pure, en - dur - ing for - ev - er; the


(Em) (F#7) (Bm) (Em/G) (D/A) (Asus4) (A) (Asus4) (A)
 Gm A/C# A7 Dm m/Bb F/C Csus4 C Csus4 C D.C.



3. stat - utes of the LORD are true, — all of them just. —

VERSE 4

(Gmaj7/B) (A/C#) (D) (Dmaj7/F#) (G) (D) (A)
 Bbmaj7/D C/E F Fmaj7/A Bb F C



4. They are more pre - cious than gold, than a heap of pur - est gold;


(Em) (F#7) (Bm) (Em) (Asus4) (A) (Asus4) (A)
 Gm A/C# A7 Dm Gm/Bb F/C Csus4 C Csus4 C D.C.



4. sweet - er al - so than syr - up — or hon - ey — from the comb. —


VERSE 5

(Gmaj7/B) (A/C#) (D) (Dmaj7/F#) (G) (D) (A)
 Bbmaj7/D C/E F Fmaj7/A Bb F C



5. Let the words of my mouth and the thought of my heart find

(Em) (F#7) (Bm) (Em/G) (D/A) (Asus4) (A) (Asus4) (A)
 Gm A/C# A7 Dm Gm/Bb F/C Csus4 C Csus4 C D.C. al fine



5. fa - vor be - fore you, O LORD, my and my re - deem - er. —

PSALM 19: YOUR WORDS, LORD, ARE SPIRIT AND LIFE

REFRAIN: (♩ = 80-84) 1st time: Cantor/All; thereafter: All

Capo 3: (D) (A/C#) (Bsus4) (Bm) (Gmaj7) (Bm) (Bm) (Bm)
F C/E Dsus4 Dm Bbmaj7 Dm Dm

(Cantor) (All)

Your words, Lord, are Spirit and life. Your words, Lord, are Spirit and life. (4. They)

(D) (A/C#) (Bsus4) (Bm) (Gmaj7) (Dsus4) (D) (Dsus4) (D)
F C/E Dsus4 Dm Bbmaj7 Fsus4 F Fsus4 F

Fine

VERSE 1

(Gmaj7/B) (A/C#) (D) (Dmaj7/F#) (G) (D) (A) (Em)
Bbmaj7/D C/E F A Bb F C Gm

1. The law of the LORD is perfect, fresh - ing the soul. The de - cree of the LORD is trust - wor - thy, giv - ing wis - dom to the sim - ple.

(F#7) (Bm) (Em/G) (D) (Asus4) (A) (Asus4) (A)
A/C# A7 Dm Gm/Bb F/C Csus4 C Csus4 C

D.C.

VERSE 2

(Gmaj7/B) (A/C#) (D) (Dmaj7/F#) (G) (D) (A)
Bbmaj7/D C/E F Fmaj7/A Bb F C

2. The pre - cepts of the LORD are right, re - joic - ing the heart; the com - mand of the LORD is clear, en - light - 'ning the eye.

(Em) (F#7) (Bm) (Em/G) (D/A) (Asus4) (A) (Asus4) (A)
Gm A/C# A7 Dm Gm/Bb F/C Csus4 C Csus4 C

D.C.

Text: John 6:63c; Psalm 19:8, 9, 10, 11, 15. Refrain text © 1969, 1981, 1997, ICCEL. All rights reserved. Used with permission. Verses text © 1970, 1997, 1998, CCD.

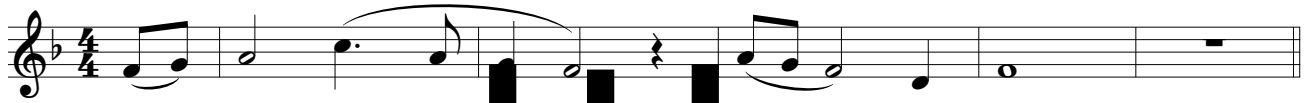
All rights reserved. Used with permission.

Music: Bob Hurd, b. 1950, © 1999, Bob Hurd. Published by OCP. All rights reserved.

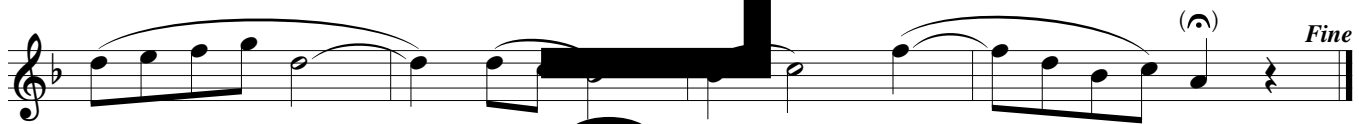
PSALM 19: YOUR WORDS, LORD, ARE SPIRIT AND LIFE

SOLO INSTRUMENT

INTRO (♩ = 80-84)



REFRAIN



VERSES 1-5



Note: Intro is compatible with suggested bracketed Intro on keyboard and guitar accompaniments.

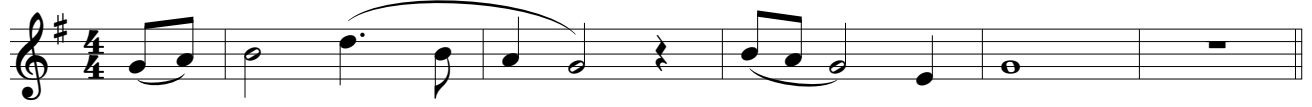
This solo instrument in C part is not intended to be played at the same time as the solo instrument in Bb part.

Music: Bob Hurd, b. 1950; arr. by Craig S. Kingsbury, b. 1952, © 1999, 2007, Bob Hurd. Published by OCP. All rights reserved.

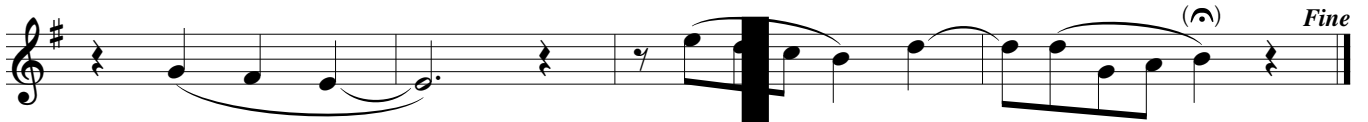
W
L
P
N
A
S

SOLO INSTRUMENT in B \flat

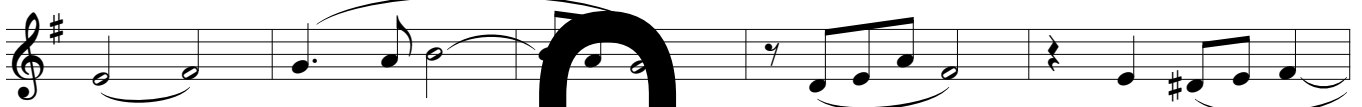
INTRO ($\text{♩} = 80-84$)



REFRAIN



VERSES 1-5



Note: Intro is compatible with suggested bracketed Intro on keyboard and guitar accompaniments.

This solo instrument in B \flat part is not intended to be played at the same tempo as the solo instrument in C part.

Music: Bob Hurd, b. 1950; arr. by Craig S. Kingsbury, b. 1952, © 1999 OCP. Published by OCP. All rights reserved.

W
L
R
S
A
S