

THE CHARITY OF CHRIST

INTRO (♩ = ca. 120) REFRAIN

B♭/F Fm7 B♭/F B♭ E♭

Melody

Keyboard

The char-i-ty of Christ urg-

- es us on, urg-es us on-wards day by day. — The

char-i-ty of Christ urg-es us on. Al-le-lu-ia! — Al-le-

Text and music: Bernadette Farrell, b. 1957, © 2004, Bernadette Farrell. Published by OCP. All rights reserved.

Fm Cm Fm Bb

lu - ia! Christ's love will show us the

1-5 Eb to Verses Final Fine

way. w

1-5 to Verses Final Fine

VERSES Eb Cm Ab

1. O taste and see that God is good. Re - joice in God a -
 2. Un - til your reign we shall remain, un - eas - y and un -
 3. Your king - dom come, your will be done, your glo - rious day ap -
 4. Send forth your light, send forth your truth and let them be our
 5. So dance and sing and shout for joy, let heav'n and earth pro -

THE CHARITY OF CHRIST, cont. (3)

B \flat Eb Gm Cm

1. lone who lis - tens to the poor of heart and
2. clear. But cour - age in your prov - i - dence will
3. pear, when love will heal all peo - ple's pain and
4. guide un - til we find the path of peace where
5. claim the kin - dom and the pow - er and the

Fm7 B \flat D.S.

1. makes with them a
2. coun - ter ev - 'ry fear. The
3. wash a - way each tear
4. jus - tice will a -
5. glo - ry of God's name

D.S.

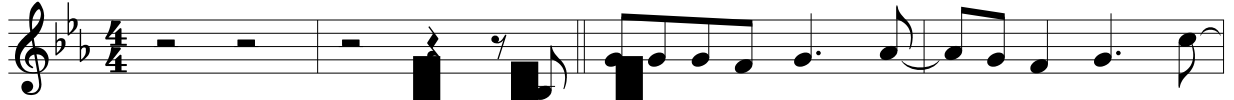
SAMPLES

THE CHARITY OF CHRIST

INTRO (♩ = ca. 120)

REFRAIN

Capo 1: (A/E) (Em7) (A/E) (A) (D) (G/D) (D)
 B♭/F Fm7 B♭/F B♭ E♭ A♭/E♭ E♭



the char-i - ty of Christ urg - es us on, urg -

(G) (F#m) (Bm) (Em) (Bm) (A) (D)
 A♭ Gm Cm Fm Cm B♭ E♭



- es us on - wards d The char - i - ty of Christ urg -

(G) (D) (G) (D) (F#) (Em) (Bm)
 A♭ E♭ A E G Fm Cm



- es us on. Al - le - lu - ia! Al - le - lu - ia! Christ's

(Em) (A) (D) (D) Final
 Fm B♭ E♭ E♭



love will show us the way. way. *Fine*

VERSES

(D) (F#m) (Bm)
 E♭ Gm Cm



1. O taste and see that God is good. Re -
2. Un - til your reign we shall re - main, un -
3. Your king - dom come, your will be done, your
4. Send forth your light, send forth your truth and
5. So dance and sing and shout for joy, let

Text and music: Bernadette Farrell, b. 1957, © 2004, Bernadette Farrell. Published by OCP. All rights reserved.

(G) Ab (A) Bb (D) Eb

- 1. joice in God ___ a - lone who lis - tens to ___ the
- 2. eas - y and ___ un - clear. But cour - age in ___ your
- 3. glo - rious day ___ ap - pear, when love will heal ___ all
- 4. let them be ___ our guide in ___ - til we find ___ the
- 5. heav'n and earth ___ pro - claim ___ e king - dom and ___ the

(F#m) Gm (Bm) Cm (Em7) Fm7 (A/E) Bb/F (A) Bb D.S.

- 1. poor of heart ___ and makes with them ___ a home. The
- 2. prov - i - dence ___ will coun - ter - ey - 'ry fear.
- 3. peo - ple's pain ___ and wash - es each tear.
- 4. path of peace ___ where jus - ce will a - bide.
- 5. pow - er and ___ the glo - ry of God's name!

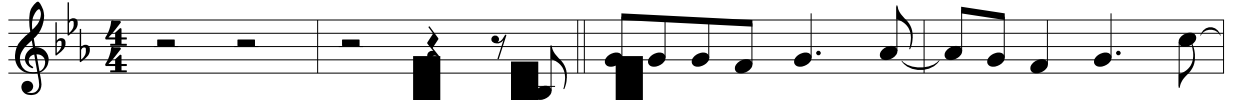
THE SAME

THE CHARITY OF CHRIST

INTRO (♩ = ca. 120)

REFRAIN

Capo 1: (A/E) (Em7) (A/E) (A) (D) (G/D) (D)
 B♭/F Fm7 B♭/F B♭ E♭ A♭/E♭ E♭



the char-i - ty of Christ urg - es us on, urg -

(G) (F#m) (Bm) (Em) (Bm) (A) (D)
 A♭ Gm Cm Fm Cm B♭ E♭



- es us on - wards d The char - i - ty of Christ urg -

(G) (D) (G) (D) (F#) (Em) (Bm)
 A♭ E♭ A E G Fm Cm



- es us on. Al - le - lu - ia! Al - le - lu - ia! Christ's

(Em) (A) (D) (D) Final
 Fm B♭ E♭ E♭



love will show us the way. way. *Fine*

VERSES

(D) (F#m) (Bm)
 E♭ Gm Cm



1. O taste and see that God is good. Re -
2. Un - til your reign we shall re - main, un -
3. Your king - dom come, your will be done, your
4. Send forth your light, send forth your truth and
5. So dance and sing and shout for joy, let

Text and music: Bernadette Farrell, b. 1957, © 2004, Bernadette Farrell. Published by OCP. All rights reserved.

(G) Ab (A) Bb (D) Eb

1. joice in God ___ a - lone who lis - tens to ___ the
 2. eas - y and ___ un - clear. But cour - age in ___ your
 3. glo - rious day ___ ap - pear, when love will heal ___ all
 4. let them be ___ our guide in ___ - til we find ___ the
 5. heav'n and earth ___ pro - claim ___ e king - dom and ___ the

(F#m) Gm (Bm) Cm (Em7) Fm7 (A/E) Bb/F (A) Bb D.S.

1. poor of heart ___ and makes with them ___ a home. The
 2. prov - i - dence ___ will coun - ter - ey - 'ry fear.
 3. peo - ple's pain ___ and wash ___ each tear.
 4. path of peace ___ where jus - ce will ___ a - bide.
 5. pow - er and ___ the glo - ry of ___ God's name!

THE SAME

THE CHARITY OF CHRIST

SOLO INSTRUMENT

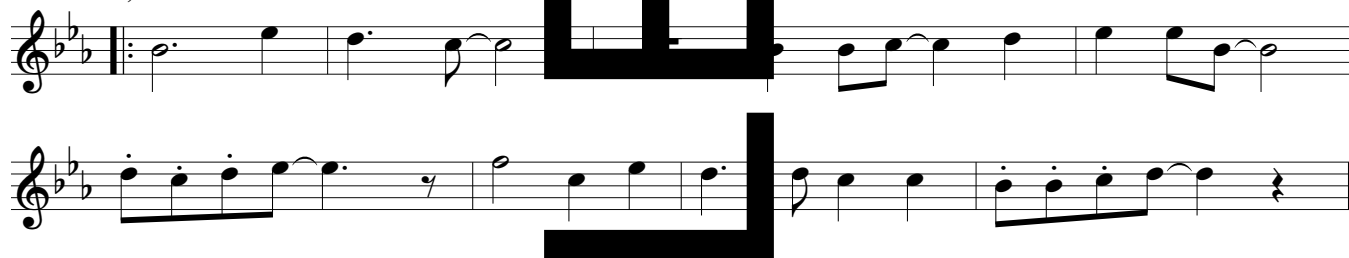
INTRO (♩ = ca. 120)

REFRAIN

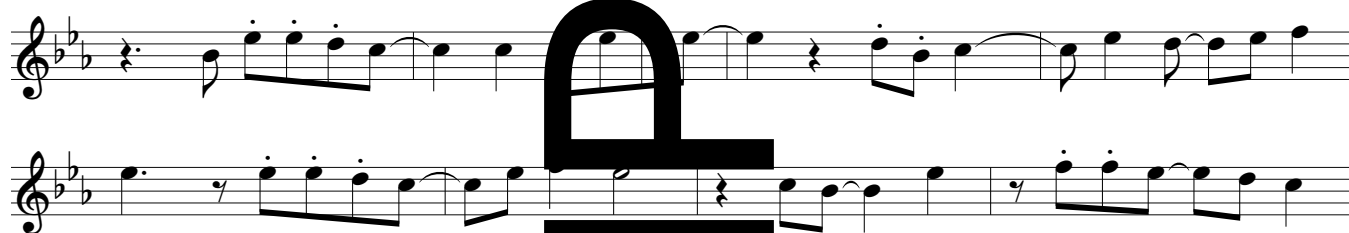
10



VERSES 1, 3



REFRAIN



VERSES 2, 4

REFRAIN

9

10



VERSE 5



REFRAIN



SOLO INSTRUMENT in B \flat

INTRO ($\text{♩} = \text{ca. } 120$)

REFRAIN

10

Musical notation for the Intro and Refrain section. The Intro consists of a whole rest followed by a half note G \flat , a quarter note F \flat , a quarter note E \flat , a quarter note D \flat , and a quarter note C \flat . The Refrain is a ten-measure phrase starting with a quarter rest, followed by eighth notes G \flat , F \flat , E \flat , D \flat , C \flat , B \flat , A \flat , G \flat , F \flat , E \flat , D \flat , and C \flat .

VERSES 1, 3

Musical notation for Verses 1 and 3. Verse 1 starts with a repeat sign, followed by a half note G \flat , a quarter note F \flat , a quarter note E \flat , and a quarter note D \flat . Verse 3 starts with a quarter rest, followed by eighth notes G \flat , F \flat , E \flat , D \flat , C \flat , B \flat , A \flat , G \flat , F \flat , E \flat , D \flat , and C \flat .

REFRAIN

Musical notation for the Refrain section. The first line starts with a quarter rest, followed by eighth notes G \flat , F \flat , E \flat , D \flat , C \flat , B \flat , A \flat , G \flat , F \flat , E \flat , D \flat , and C \flat . The second line starts with a quarter rest, followed by eighth notes G \flat , F \flat , E \flat , D \flat , C \flat , B \flat , A \flat , G \flat , F \flat , E \flat , D \flat , and C \flat .

REFRAIN

9

10

Musical notation for the Refrain section. The first line starts with a quarter rest, followed by eighth notes G \flat , F \flat , E \flat , D \flat , C \flat , B \flat , A \flat , G \flat , F \flat , E \flat , D \flat , and C \flat . The second line starts with a quarter rest, followed by eighth notes G \flat , F \flat , E \flat , D \flat , C \flat , B \flat , A \flat , G \flat , F \flat , E \flat , D \flat , and C \flat .

VERSE 5

Musical notation for Verse 5. The first line starts with a quarter note G \flat , a quarter note F \flat , a quarter note E \flat , and a quarter note D \flat . The second line starts with a quarter note C \flat , a quarter note B \flat , a quarter note A \flat , and a quarter note G \flat .

REFRAIN

Musical notation for the Refrain section. The first line starts with a quarter rest, followed by eighth notes G \flat , F \flat , E \flat , D \flat , C \flat , B \flat , A \flat , G \flat , F \flat , E \flat , D \flat , and C \flat . The second line starts with a quarter rest, followed by eighth notes G \flat , F \flat , E \flat , D \flat , C \flat , B \flat , A \flat , G \flat , F \flat , E \flat , D \flat , and C \flat . The third line starts with a quarter rest, followed by eighth notes G \flat , F \flat , E \flat , D \flat , C \flat , B \flat , A \flat , G \flat , F \flat , E \flat , D \flat , and C \flat .