

Emmanuel

Refrain by Steve Angrisano
Verses based on Advent 'O' Antiphons

Steve Angrisano
Keyboard accompaniment by Ken Canedo

INTRO Joyfully (♩. = 68-72)

Fadd9 F Bb/F Fsus4 Fadd9 F Bb/F Fsus4

REFRAIN

Come, come, Em - man - u Son of God, ap - pear.

F F/A Bb F Bb F/A Csus4 C

Heav - en and earth, re-joice Sal - va - tion is draw - ing near. Sal -

Dm Dm/C Bb F/A Cm7 Csus4 C to Coda ⊕ 1-4

1-4
Dm Dm/C Bb F/A

Refrain text and music © 2004, Steve Angrisano. Published by OCP Publications. All rights reserved.

va - tion is draw - ing near. near.

to Verses 5 *D.S. al Coda*

Gm7 Csus4 C Fadd9 F Bb/F Fsus4 to Verses 5 Fadd9 F *D.S. al Coda*

VERSES

1. O come, O come, Em - man - u - el,
 2. O come, O Wis - dom from on high,
 3. O come, O Rod of Iron stem;
 4. O come, De - sire of na - tions, bind

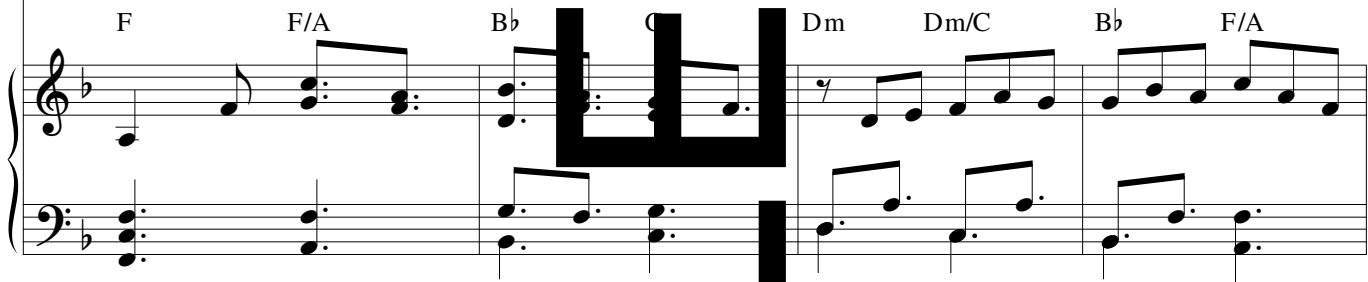
F F/A Bb F F/A Bb C

1. And ran - som cap - tive Je - ra - sa - lem,
 2. Who or - dered all things right - eous;
 3. From ev - 'ry foe de - liver them
 4. In one the hearts of hu - man - kind;

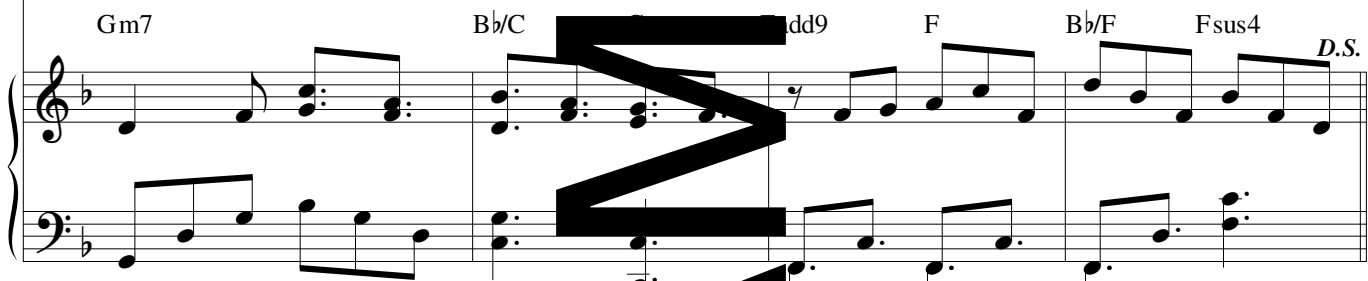
Dm Dm/C Bb Fadd9 F Bb/F Fsus4



1. That mourns in lone - ly ex - ile here
2. To us the path of knowl - edge show,
3. That trust your might - y pow'r to save,
4. Make all our sad di - vi - sions cease,



1. Un - til the Son God ap - pear.
2. And teach us in what ways to go.
3. And give them vic - tory o'er the grave.
4. And be for us a way to His face.



⊕ CODA

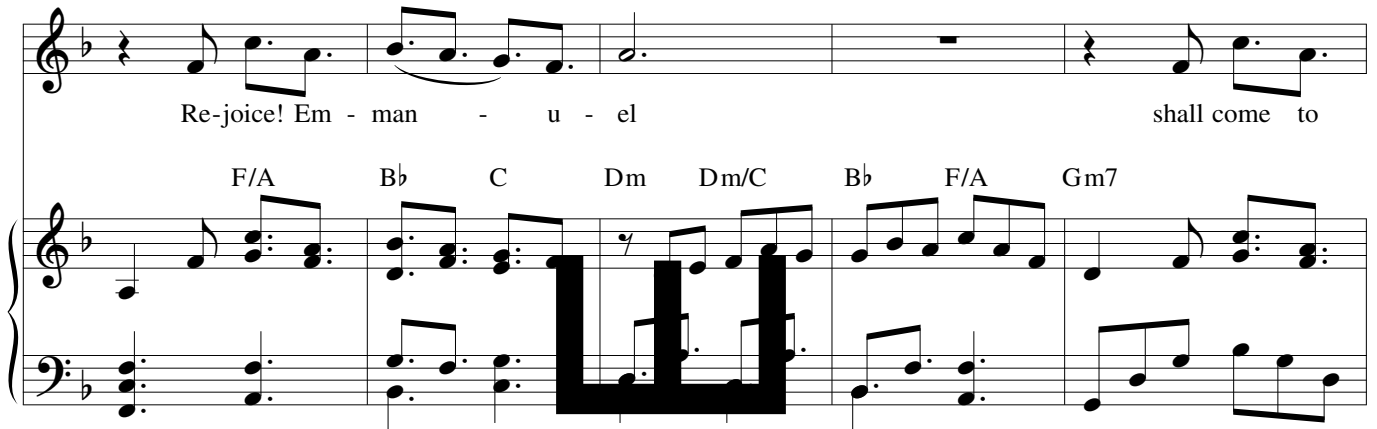


near. Sal - vation is draw - n near.



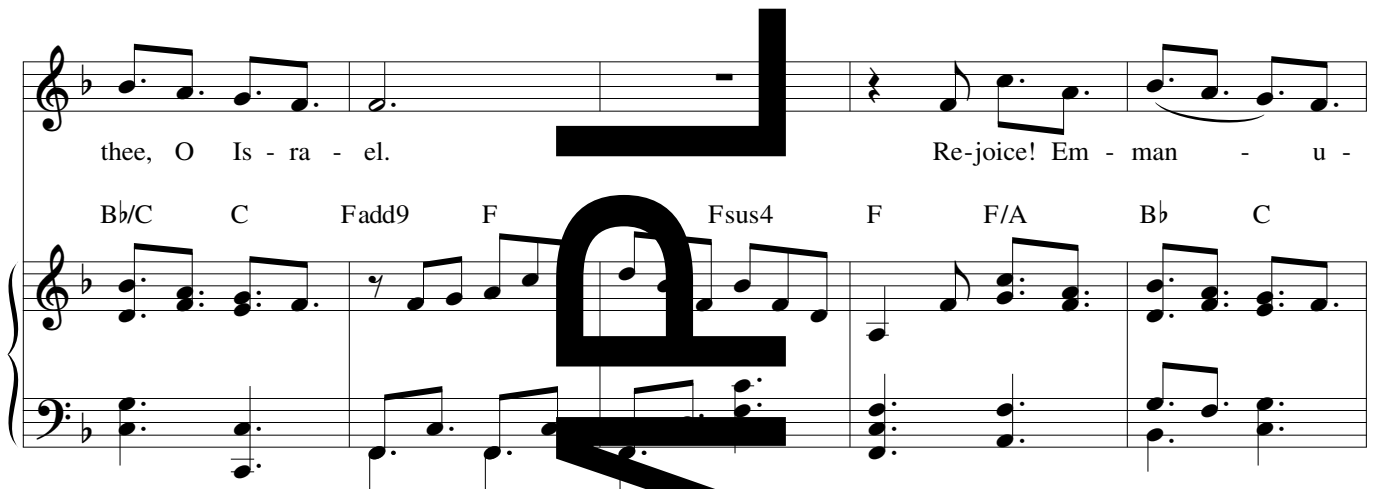
Re-joyce! Em - man - u - el shall come to

F/A B♭ C Dm Dm/C B♭ F/A Gm7



thee, O Is - ra - el. Re-joyce! Em - man - u -

B♭/C C Fadd9 F Fsus4 F F/A B♭ C



el shall come to thee, O Is - ra - el.____

Dm Dm/C B♭ F/A Gm7 B♭/C Fadd9 F



B♭/F Fsus4 Fadd9 B♭/F Fsus4 F

rit.

