

Holy, Holy, Holy Cry

Genevieve Glen, OSB

Rick Modlin

INTRO (♩ = ca. 108)

VERSES

1. The Lamb of God
2. In bitter sac -
3. To him now let
4. While heav - ens' prais -

D Gadd9 Em7 As4 A Em7

1. stands on the height
2. - ri - fice once slain,
3. our prayers a - rise
4. - es hail his worth,

D/F# Gadd9

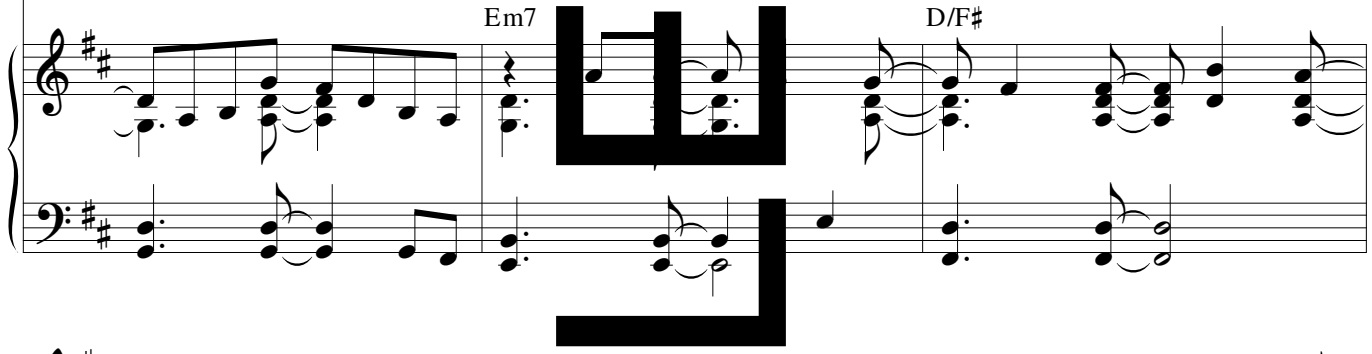
1. a - mong the glor - ious clouds of light,
2. he lives in tri - umph to reign
3. in clouds of in - cense to the skies,
4. he catch - es up the prayers of earth

Bm7 Cadd9 Gadd9

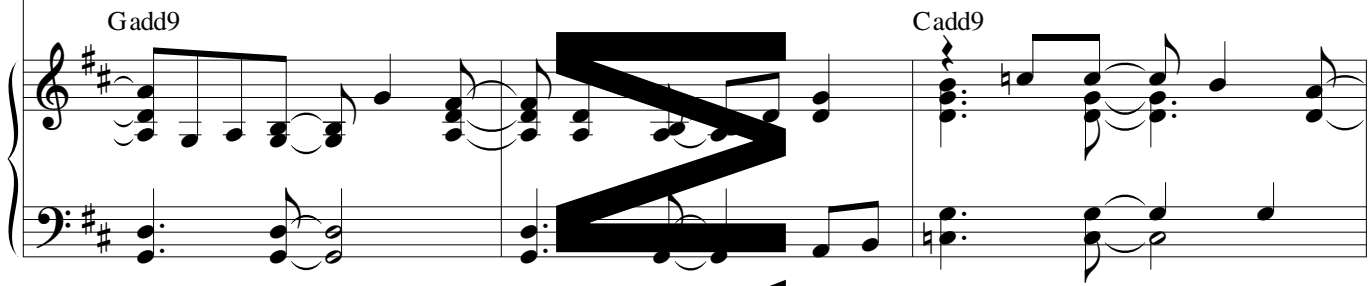
Text © 1998, 2001, The Benedictine Nuns of the Abbey of St. Walburga. Music © 2004, Rick Modlin. Published by OCP Publications. All rights reserved.



1. a - bove___ the cit - y paved in gold___
 2. a - mong___ the saints___ clad all in white___
 3. from cen - ser borne___ by an - gel hands,___
 4. in wound - ed hands,___ till, count - less throng,___



1. ___ where death___ and dark -
 2. ___ in realms___ where day___
 3. ___ bright tongues___ of fire___
 4. ___ the sing - ers come___



1. - ness have___ no hold. ___ And,
 2. ___ yields not___ to night. ___
 3. ___ from far - flung lands. ___
 4. ___ to join___ the song. ___



Holy, Holy, Holy Cry (3)

REFRAIN

“Ho - ly, ho - ly, ho - ly” cry — to you, — our Lord —

D G A Bm G D

— Most High. — “Ho - ly, ho - ly, ho - ly” cry —

D/A Asus4 A D F# Bm F#m/A E/G#

to you, — our God — Most High.

G D Asus4 A to Coda ⊕ 1-2 D Gadd9

Em7 Asus4 A D Gadd Em7 Asus4 A to Verses 3, 4

W
E
M
A
S

3 BRIDGE

Soloist To Fa - ther, Son, _____ and Spir - it, Three _____

High.

Choir/All To Fa - ther, Son, _____ and Spir - it, Three _____

³
Cadd9

Gadd9/B

Am7

C/G

in One _____ all - ho - ly Mys - ter - y. _____

in One _____ all - ho -

Fmaj9

C/E

Dm7

Fa - ther, Son, _____ and Spir - it, Three _____

- ly Mys - ter - y. _____

F/C

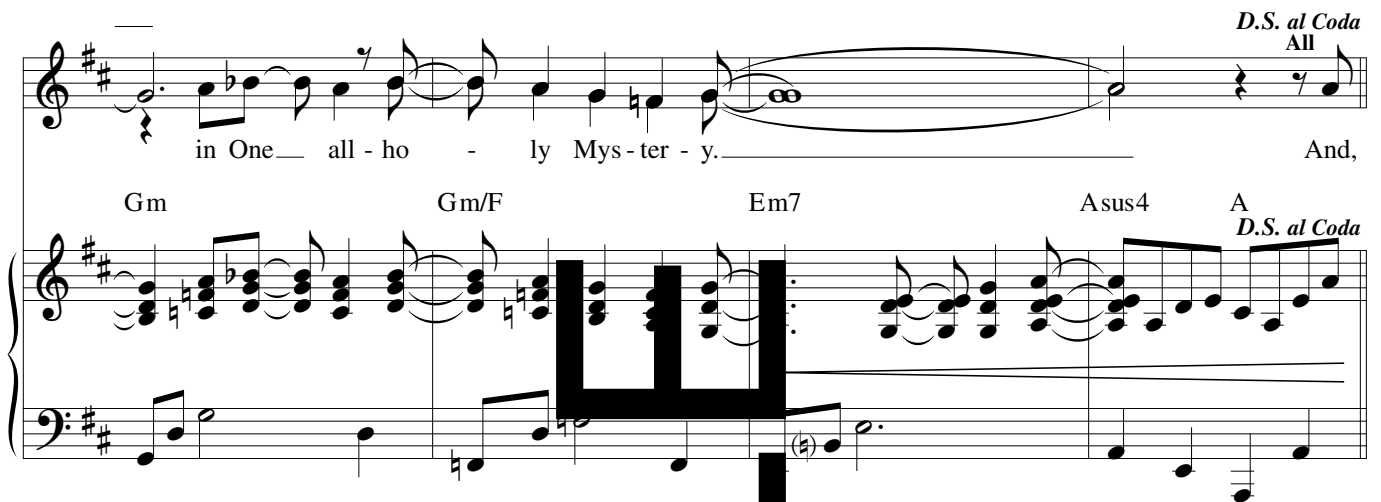
B^b9

F/A

D.S. at Coda
All

in One all - ho - ly Mys - ter - y. And,

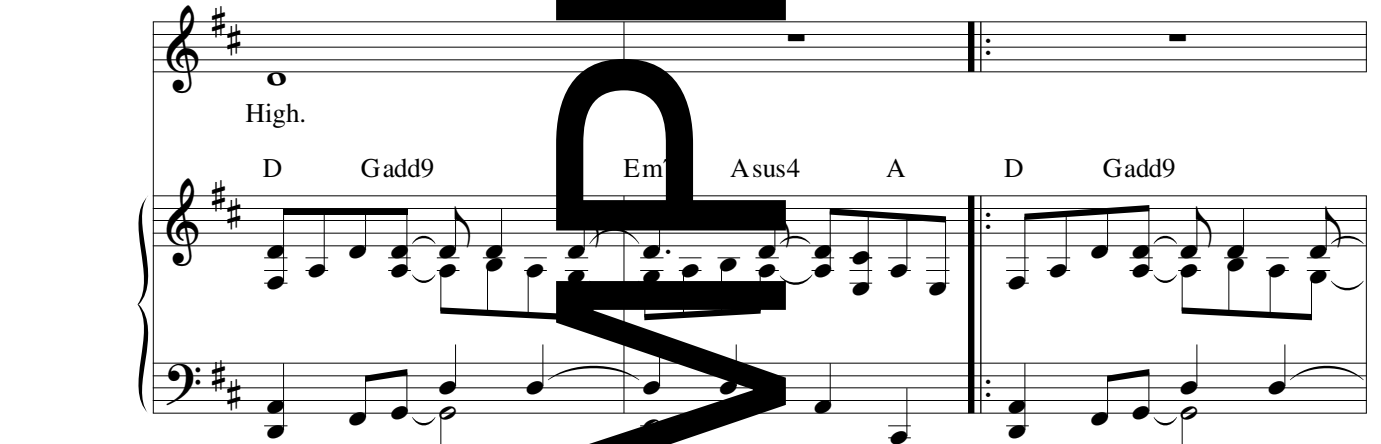
Gm Gm/F Em7 Asus4 A D.S. at Coda



⊕ CODA

High.

D Gadd9 Em Asus4 A D Gadd9



Em7 Asus4 A D Em7 D/F# G A7 G/B A/C# D

8vb



W
A
S