



Choral Series

for young people

W

L

Crown Believe

E

Estela Carcía-López

and

Rodolfo López

M

Assembly, Two-part Choir, Descant, Keyboard,
Guitar, and Solo Instrument in C or B \flat

A

S

MUSIC • WORSHIP • SERVICE

1.800.548.8749

ocp.org



for Patrick Flahive and Pueri Cantores San Gabriel Valley, California

Creo/I Believe

Based on Matthew 8:5-10; 9:20-22; 15:21, 28
Spanish, Estela García-López and Tomás Ayala
English, Estela García-López and Rodolfo López

Estela García-López and Rodolfo López

INTRO (♩. = ca. 54)

Keyboard

G D/G C/G G

G D/G C/G G

REFRAIN

Descant

Cre - o en Cris - to,
I be - lieve

Melody

Cre - o, cre e - res el Cris - to, el
I be - lieve, I be - lieve You are the Sav - ior, _____

Harmony

G D/G C/G G C G

Spanish text © 2009, Estela García and Tomás Ayala. Music and English text © 2009, Estela García and Rodolfo López.
Text and music published by OCP, 5536 NE Hassalo, Portland, OR 97213. All rights reserved.

Hi - jo de Dios. Cre - o en Cris - to,
 Je - sus Christ. I be - lieve.

C F G D/G C/G G

Hi - jo de Dios. Cre - o en Cris - to, e - res
 Je - sus Christ. I be - lieve, I be - lieve.

nues - tro Sal - va - dor.
 The Son of God.

C D G D/G C/G

nues - tro Sal - va - dor.
 You are the Son of God.

1-3 to Verses Final

1-3 to Verses Final

1-3 to Verses Final

D/G C/G G

rit.

Fine

*Sing cue notes after Verse 2 if descant is sung.

VERSES

Bm Em C D

1. U - na mu - jer en - fer - ma por a - ños con
 2. La ca - na - ne - a te pi - dió cu -
 3. Tú es - cu - chas - te al ca - pi - tán. Que -

1. A wom - an suf - f'ring for man - y years, 7
 2. A Ca - naan - ite wo - man called out to you. She
 3. When a cen - tu - rion ap - pealed for his ser - vant, "Lord,

Fmaj7 Em Am D Dm/G

1. só - lo to - car - te e - lla sa - nó. Te dis - te la
 2. rar a su hi - ja - da. 7 Tú le di -
 3. rí - a a - yu - da ra su sier - vo. 7 Y le di -

1. touched the hem on your cloak and was healed. 7 You turned a -
 2. asked for pit - y for her tor - ment - ed gh - ter. 7 You said, "O
 3. just say the word and he shall be healed." 7 And in a -

C F B \flat F E \flat /F

1. vuel - ta _____ y la mi - ras - te, “Á - ni - mo, hi - ja. Tu
 2. jis - te, “¡Qué gran - de es tu fe!” Y le cum - plis - te _____
 3. jis - te, “I - ré a sa - nar - lo”, “Ja - más en - con - tre u - na

1. *round,* _____ saw her and said, “Cour - age, daugh - ter! Your
 2. *wom - an,* _____ great is your faith! Let it be done for
 3. *maze - ment* _____ you said to him, “No one in Is - rael _____

A \flat B \flat F A7 D7 D.S.

1. fe te ha sal - va - do”. _____
 2. lo que pi - dió. _____
 3. fe _____ tan gran - de”. _____

1. *faith* _____ has saved _____
 2. *you as you* wish.” _____
 3. *has* _____ such faith.” _____

D.S.

Creo/I Believe

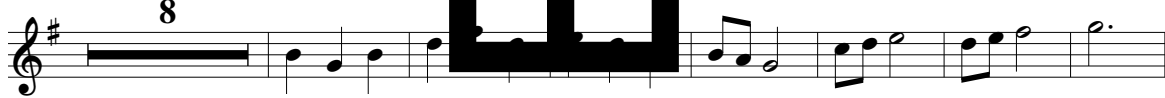
SOLO INSTRUMENT in C

Estela García-López and Rodolfo López

INTRO (*♩* = ca. 54)



REFRAIN



VERSES 1-3



W
L
R
N
A
S

Creo/I Believe

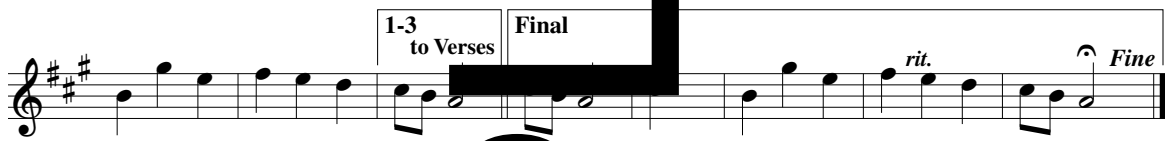
SOLO INSTRUMENT in B \flat

Estela García-López and Rodolfo López

INTRO (♩. = ca. 54)



REFRAIN



VERSES 1-3



