

Wherever There Is Love

(The Charity of Christ)

Bernadette Farrell

(♩ = ca. 120) ♩ REFRAIN

Soprano Alto
 Tenor Bass
 Keyboard

*Wher - ev - er there is love, there -
 The char - i - ty of Christ urg -

B♭/F Fm7 B♭/F B♭ ♩ E♭ Ab/E♭

Descant (tacet 1st time)

Al - le - lu -

— will be God, liv - ing a - mong us day by day. — Wher -
 - es us on, urg - es us on - wards day by day. — The

E♭ Ab Gm Cm Fm Cm B♭

© 2004, 2011, Bernadette Farrell. Published by OCP, 5536 NE Hassalo, Portland, OR 97213. All rights reserved.

*Original text, as written for the Sisters of Charity and published previously in the octavo "The Charity of Christ" (ed. 20571).

WHEREVER THERE IS LOVE (Keyboard/Choral), cont. (2)

ia, al - le - lu - ia. Al - le - lu - ia,

ev - er there is love, there will be God. Al - le - lu - ia! Al - le -
 char - i - ty of Christ urg - es us on. Al - le - lu - ia! Al - le -

lu - ia! God's love will show us the way. Where -
 lu - ia! Christ's love will show us the way. The

Chord symbols: Eb, Ab/Eb, Eb, Ab, Eb/G, Fm, Cm, Fm, Bb, Eb

1, 7 D.S.

1, 7 D.S.

1, 7 D.S.

WHEREVER THERE IS LOVE (Keyboard/Choral), cont. (3)

2-6 to Verses Final *Fine*

al - le - lu - ia, al - al - le - lu - ia, al - le - lu - ia.

2-6 to Verses Final *Fine*

way. way.
way. way.

2-6 to Verses Final *Fine*

E_b E_b

VERSES

Descant

le - lu - ia.

Melody

1. O taste and see — that God is good. — Re - joice in God — a -
 2. Un - til your reign — we shall re - main, — un - eas - y and — un -
 3. Your king - dom come, — your will be done, — your glo - rious day — ap -
 4. Send forth your light, — send forth your truth — and let them be — our
 5. So dance and sing — and shout for joy, — let heav'n and earth — pro -

E_b G_m C_m A_b

WHEREVER THERE IS LOVE (Keyboard/Choral), cont. (4)

1. lone who lis - tens to the poor of heart and
 2. clear. But cour - age in your prov - i - dence will
 3. pear, when love will heal all peo - ple's pain and
 4. guide un - til we find the path of peace where
 5. claim the king - dom and the pow - er and the

Bb Eb Gm Cm

1. makes with them a home. *D.S.*
 2. coun - ter ev - ery fear. *Wher -*
 3. wash a - way each tear. *The*
 4. jus - tice will a - bide.
 5. glo - ry of God's name!

Fm7 Bb/F Fm7 Bb/F Bb *D.S.*

Wherever There Is Love

(The Charity of Christ)

(Guitar/Vocal)

Bernadette Farrell

(♩ = ca. 120)

REFRAIN

Capo 1: (A/E) (Em7) (A/E) (A) (D) (G/D) (D) (G)
 B♭/F Fm7 B♭/F B♭ E♭ A♭/E♭ E♭ A♭

Wher - ev - er there is love, there ___ will be God, liv -
 *The char - i - ty of Christ urg - es us on, urg -

(F♯m) (Bm) (Em) (Bm) (A) (D) (G/D)
 Gm Cm Fm Cm B♭ E♭ A♭/E♭

- ing a - mong us day by day. ___ Wher - ev - er there is love, there ___
 - es us on - wards day by day. ___ The char - i - ty of Christ urg -

(D) (G) (D/F♯) (Em) (Bm)
 E♭ A♭ E♭/G Fm Cm

___ will be God. Al - le - lu - ia! ___ Al - le - lu - ia! ___ God's
 - es us on. Al - le - lu - ia! ___ Al - le - lu - ia! ___ Christ's

(Em)
 Fm

(A)
 B♭

1, 7
 (D)
 E♭

2-6
 (D)
 E♭

Final
 (D)
 E♭

love will show ___ us the way. Wher - way. way. ___
 love will show ___ us the way. The way. way. ___

© 2004, 2011, Bernadette Farrell. Published by OCP, 5536 NE Hassalo, Portland, OR 97213. All rights reserved.

*Original text, as written for the Sisters of Charity and published previously in the octavo "The Charity of Christ" (ed. 20571).

VERSES

(D) Eb (F#m) Gm (Bm) Cm

1. O taste and see _____ that God is good. _____ Re -
2. Un - til your reign _____ we shall re - main, _____ un -
3. Your king - dom come, _____ your will be done, _____ your
4. Send forth your light, _____ send forth your truth _____ and
5. So dance and sing _____ and shout for joy, _____ let

(G) Ab (A) Bb (D) Eb

1. joice in God _____ a - lone who lis - tens to _____ the
2. eas - y and _____ un - clear. But cour - age in _____ your
3. glo - rious day _____ ap - pear, when love will heal _____ all
4. let them be _____ our guide un - til we find _____ the
5. heav'n and earth _____ pro - claim the king - dom and _____ the

(F#m) Gm (Bm) Cm (Em7) Fm7 (A/E) Bb/F (Em7) Fm7 (A/E) Bb/F (A) Bb D.S.

1. poor of heart _____ and makes with them _____ a home. _____
 2. prov - i - dence _____ will coun - ter ev - ery fear. _____
 3. peo - ple's pain _____ and wash a - way _____ each tear. _____
 4. path of peace _____ where jus - tice will _____ a - bide. _____
 5. pow - er and _____ the glo - ry of _____ God's name! _____
- Wher -
The

Wherever There Is Love

(The Charity of Christ)

SOLO INSTRUMENT in C

Bernadette Farrell

INTRO (♩ = ca. 120)

(8va ad libitum throughout)

REFRAIN

10

Musical notation for the Intro and Refrain. The Intro consists of a whole rest followed by a half note G4, a quarter note A4, a quarter note B4, and a half note C5. The Refrain is a whole note chord of G4, B4, and C5.

VERSES 1, 3

Musical notation for Verses 1 and 3. Verse 1: G4, A4, B4, C5, B4, A4, G4. Verse 3: G4, A4, B4, C5, B4, A4, G4.

REFRAIN

Musical notation for the Refrain. It consists of a whole note chord of G4, B4, and C5.

VERSES 2, 4

REFRAIN

VERSE 5

9

10

Musical notation for Verses 2, 4, and Verse 5. Verse 2: G4, A4, B4, C5, B4, A4, G4. Verse 4: G4, A4, B4, C5, B4, A4, G4. Verse 5: G4, A4, B4, C5, B4, A4, G4.

REFRAIN

Musical notation for the Refrain. It consists of a whole note chord of G4, B4, and C5.

Musical notation for the Final. It consists of a whole note chord of G4, B4, and C5.

© 2004, 2011, Bernadette Farrell. Published by OCP, 5536 NE Hassalo, Portland, OR 97213. All rights reserved.

For use with the choral octavo "Wherever There Is Love," edition 30108022, or the songbook *Love Goes On*, edition 30108001.

Wherever There Is Love

(The Charity of Christ)

SOLO INSTRUMENT in B \flat

Bernadette Farrell

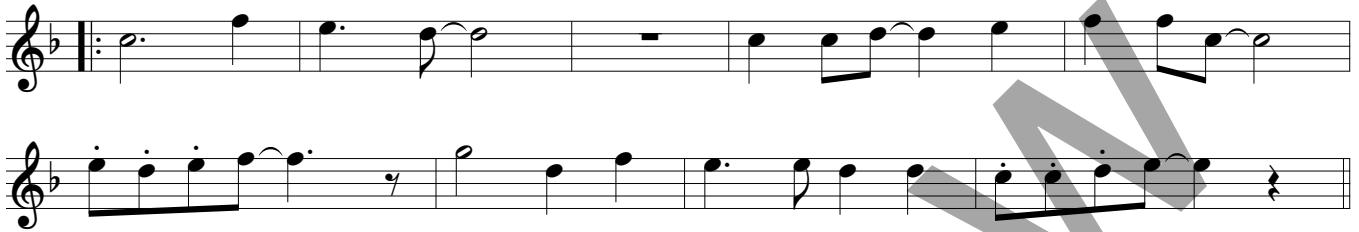
INTRO (♩ = ca. 120)

REFRAIN

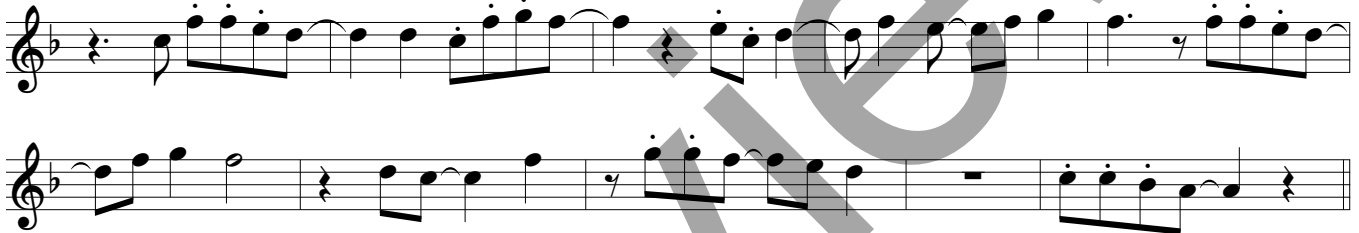
10



VERSES 1, 3



REFRAIN



VERSES 2, 4

REFRAIN

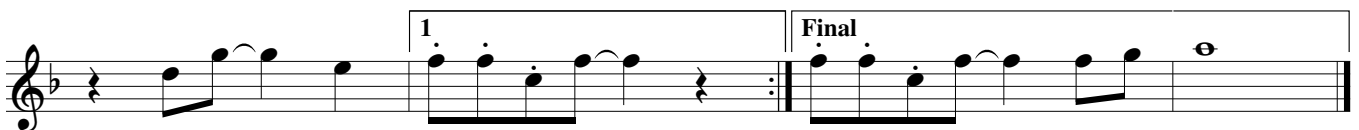
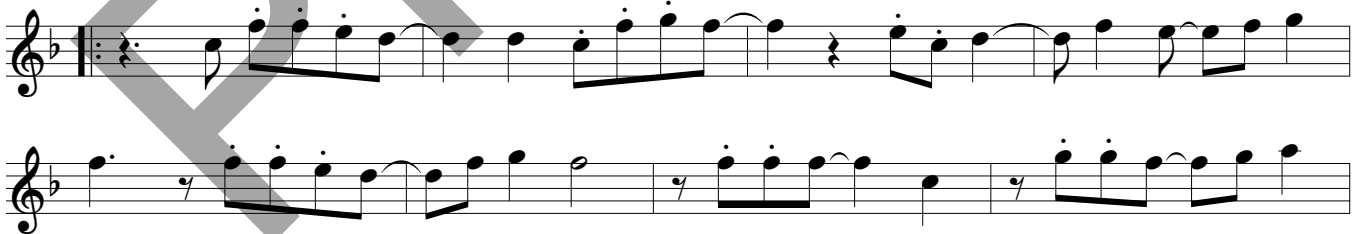
VERSE 5

9

10



REFRAIN



© 2004, 2011, Bernadette Farrell. Published by OCP, 5536 NE Hassalo, Portland, OR 97213. All rights reserved.

For use with the choral octavo "Wherever There Is Love," edition 30108022, or the songbook *Love Goes On*, edition 30108001.

Assembly Edition

WHEREVER THERE IS LOVE

Bernadette Farrell

Refrain



Wher-ev-er there is love, there will be God, liv - ing a-mong us
day by day. Wher-ev-er there is love, there will be God. Al-le -
lu - ia! Al-le - lu - ia! God's love will show us the way.

Verses



1. O taste and see that God is good. Re -
2. Un - til your reign we shall re - main, un -
3. Your king - dom come, your will be done, your
4. Send forth your light, send forth your truth and
5. So dance and sing and shout for joy, let

1. joice in God a - lone who lis - tens to the
2. eas - y and un - clear. But cour - age in your
3. glo - rious day ap - pear, when love will heal all
4. let them be our guide un - til we find the
5. heav'n and earth pro - claim the king - dom and the

to Refrain

1. poor of heart and makes with them a home.
2. prov - i - dence will coun - ter ev - ery fear.
3. peo - ple's pain and wash a - way each tear.
4. path of peace where jus - tice will a - bide.
5. pow - er and the glo - ry of God's name!

© 2004, 2011, Bernadette Farrell. Published by OCP, 5536 NE Hassalo, Portland, OR 97213. All rights reserved.

For reprint permissions, please visit OneLicense.net or contact us at 1-800-663-1501.

Composer Notes

This simple song is intended to be flexible. The refrain may be sung as a repetitive chant, or expanded to include the verses provided. Originally written for the Sisters of Charity, the musical style reflects the work of that order on several continents. This version is an adaptation of the text for wider use. Composer Notes

This simple song is intended to be flexible. The refrain may be sung as a repetitive chant, or expanded to include the verses provided. Originally written for the Sisters of Charity, the musical style reflects the work of that order on several continents. This version is an adaptation of the text for wider use.