

in memory of Mildred Nevile, MBE (1927–2012)

Act Justly

Based on Micah 6:8

Bernadette Farrell

INTRO (♩ = ca. 116) **REFRAIN**

Soprano Alto
Tenor Bass
Keyboard

Act just - ly;
love ten - der - ly. Walk,
walk hum - bly with your God.

Chord symbols: D, Em/D, D, Em/D, D, D, Em/D, D, Em/D, D, G/D, D, Em/D, A/D, D, Em/D, D

© 2011, Bernadette Farrell. Published by OCP, 5536 NE Hassalo, Portland, OR 97213. All rights reserved.

1-6	to Verses	7	<i>D.S. al fine</i>	Final	<i>Fine</i>
-----	-----------	---	---------------------	-------	-------------

VERSES

1. How shall we — come be - fore you? With what gifts — to a - dore you?
 2. This is what — the Lord asks you: on - ly this — will re - main true,
 3. Peo - ple, lift — up your voic - es; by your ac - tions make choic - es.
 4. On this plan - et of plen - ty, lives and fu - tures lie emp - ty.
 5. Gath - er, sis - ters and broth - ers; gath - er, fa - thers and moth - ers.
 6. Bread of life — will be bro - ken; word of hope — will be spo - ken.

1. Will our sac - ri - fic - es please — you? — What should we bring — to - day? —
 2. what is good — has been ex - plained to you: — Lis - ten a - gain — to - day. —
 3. In this time, — the on - ly time we have, — show us the way — to live. —
 4. In this world, — the on - ly world we have, — show us the way — to live. —
 5. In this place, — the on - ly place we grow, — show us the way — to live. —
 6. In this sac - ra - ment of end - less care — show us the way — to live. —

D.S.

in memory of Mildred Nevile, MBE (1927–2012)

Act Justly

(Guitar/Vocal)

Based on Micah 6:8

Bernadette Farrell

INTRO (♩ = ca. 116)

D Em/D D

Em/D D

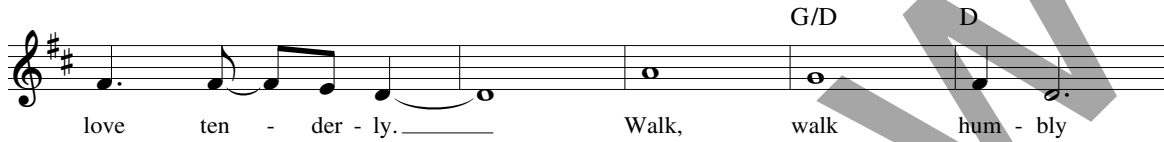
REFRAIN

D Em/D D

Em/D D

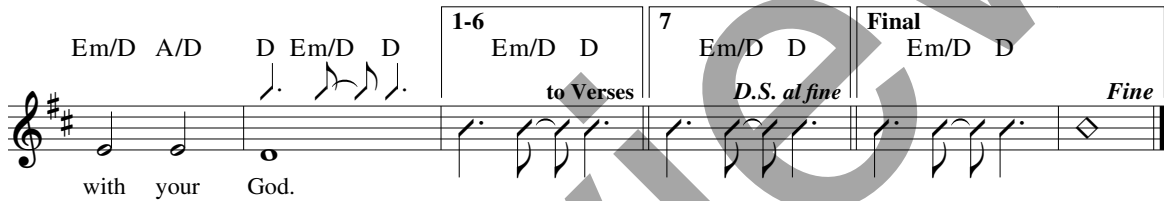


Act just - ly; _____



love ten - der - ly. _____

Walk, walk hum - bly



with your God.

VERSES



- | | | | | |
|-------------------|----------------|-------------|-----------------|------------|
| 1. How shall we | come be - fore | you? | With what gifts | to a - |
| 2. This is what | the Lord asks | you: | on - ly this | will re - |
| 3. Peo - ple, | lift up your | voic - es; | by your ac - | tions make |
| 4. On this plan - | et of plen - | ty, | lives and fu - | tures lie |
| 5. Gath - er, | sis - ters | and broth - | ers; | gath - er, |
| 6. Bread of life | will be bro - | ken; | word of hope | will be |



- | | | | | | | |
|----------|--------|------|-------------|---------------|----------|------------|
| 1. dore | you? | Will | our sac - | ri - fic - es | please | you? |
| 2. main | true, | what | is good | has been | ex - | plained to |
| 3. choic | - es. | In | this time, | the on - | ly time | we have, |
| 4. emp | - ty. | In | this world, | the on - | ly world | we have, |
| 5. moth | - ers. | In | this place, | the on - | ly place | we grow, |
| 6. spo | - ken. | In | this sac - | ra - ment | of end - | less care |



- | | | | |
|----------------|----------|------|----------|
| 1. What should | we bring | to - | day? |
| 2. Lis - ten | a - gain | to - | day. |
| 3. show | us the | way | to live. |
| 4. show | us the | way | to live. |
| 5. show | us the | way | to live. |
| 6. show | us the | way | to live. |

Act Justly

TRUMPET in B \flat

Bernadette Farrell

INTRO ($\text{♩} = \text{ca. } 116$)

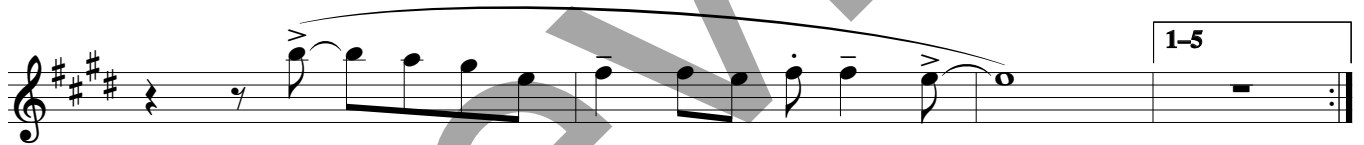
REFRAIN

VERSES 1-6

2 10



REFRAIN



6 *D.S. al fine* Final



Composer Notes

Søren Kierkegaard (1813–1855) said that the saint is someone whose life is about one thing. In the thirteenth century, Meister Eckhart wrote, “a just person is one who is conformed and transformed into justice.” Mildred Nevile, MBE (1927–2012), to whom this song is dedicated, was General-Secretary of the Catholic Institute for International Relations for 18 years. Her leadership inspired a generation, forged policy and led to new development directions for international aid agencies, bringing about change from Latin America to South Africa. Her faithful friendship to so many of us remains a treasure.

The piece may be sung in different ways, with verses as printed, or with the chorus repeated as an SATB chant when on the move. The trumpet part for this piece is a tribute to my much-loved uncle, jazz trumpeter, artist and teacher John McAndrew (1937–2012), whose way of life inspired us with joy. His New Orleans-style funeral was led by a jazz band of his friends through the streets of Wakefield, followed by many hundreds of people whose lives he had touched.


Preview

Assembly Edition

ACT JUSTLY

Bernadette Farrell

Refrain



Act just - ly; love ten - der-ly.



Walk, walk hum-bly with your God.

Verses



1. How shall we come be - fore you? With what gifts
2. This is what the Lord asks you: on - ly this
3. Peo - ple, lift up your voic - es; by your ac -
4. On this plan - et of plen - ty, lives and fu -
5. Gath - er, sis - ters and broth - ers; gath - er, fa -
6. Bread of life will be bro - ken; word of hope



1. to a - dore you? Will our sac - ri - fic - es
2. will re - main true, what is good has been ex -
3. - tions make choic - es. In this time, the on - ly
4. - tures lie emp - ty. In this world, the on - ly
5. - thers and moth - ers. In this place, the on - ly
6. will be spo - ken. In this sac - ra - ment of



1. please you? What should we bring to - day?
2. plained to you: Lis - ten a - gain to - day.
3. time we have, show us the way to live.
4. world we have, show us the way to live.
5. place we grow, show us the way to live.
6. end - less care show us the way to live.

to Refrain

Text based on Micah 6:8. Text and music © 2011, Bernadette Farrell.
Published by OCP, 5536 NE Hassalo, Portland, OR 97213. All rights reserved.

For reprint permissions, please visit OneLicense.net or contact us at 1-800-663-1501.