

Dona Nobis Pacem

for Lezlie and Kathryn

Gregory Norbet
Arranged by Peter Quint

Organ

INTRO: (♩ = ca. 84)

Soprano (Descant) **REFRAIN:**

Do - na

Alto (Melody) **REFRAIN:**

Do - na - no - bis

Tenor

Bass

no - bis pa - cem. Do -

pa - cem. Do - na

1-6 to Verses

na - pa - cem.

1-6 to Verses

no - bis pa - cem.

1-6 to Verses

This system contains three staves of music. The top staff is a vocal line in treble clef with lyrics 'na - pa - cem.' and a '1-6 to Verses' instruction. The middle staff is a vocal line in treble clef with lyrics 'no - bis pa - cem.' and a '1-6 to Verses' instruction. The bottom staff is a piano accompaniment in bass clef.

Final

cem.

Final

cem. Do - na

Final

This system contains three staves of music. The top staff is a vocal line in treble clef with lyrics 'cem.' and a 'Final' instruction. The middle staff is a vocal line in treble clef with lyrics 'cem. Do - na' and a 'Final' instruction. The bottom staff is a piano accompaniment in bass clef with a 'Final' instruction.

no - bis pa - cem.

rit. *a tempo*
Do - na

Do - na no - bis pa - cem.

rit. *a tempo*
Do - na

rit. (colla voce) *a tempo*

pa - cem. *Fine*

pa - cem. *Fine*

Fine

Dona Nobis Pacem

VERSES:

1. Give us peace, God, _____ peace for all, like a
 2. God of near - ness, _____ God of life, you are
 3. Set us free, God, from mind - less ways; guide us
 4. You re - new us _____ with great love; God a -
 5. Be our breath, God, _____ deep and pure; feed our
 6. Ma - ra - na - tha: _____ come to us with your

1. riv - er _____ run - ning free - ly. *D.S.*
 2. with us; _____ we re - jice.
 3. in pur - su - ing good.
 4. mong us: _____ this our joy!
 5. hun - ger _____ for your truth.
 6. heal - ing _____ gift of peace. *D.S.*

Dona Nobis Pacem

FLUTE

Gregory Norbet

INTRO: (♩ = ca. 84)



REFRAIN:

VERSE 1:



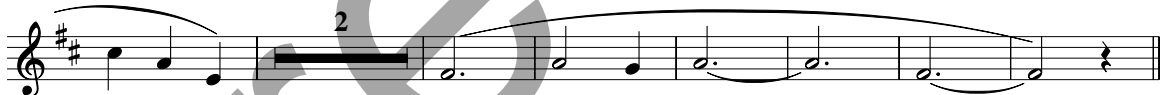
REFRAIN:



VERSE 2:



REFRAIN:



VERSE 3:



REFRAIN:



Assembly Edition

DONA NOBIS PACEM

Gregory Norbet

REFRAIN:

Musical notation for the Refrain, consisting of five staves. The first staff begins with a treble clef, a key signature of one sharp (F#), and a 3/4 time signature. The lyrics are: Do - na no - bis — Ê pa - cem. — Ê. The second staff continues the melody with the lyrics: Do - na no - bis — Ê pa - cem. — Ê. The third staff includes a 'Final' marking and a '2' indicating a second ending, with lyrics: cem. — Ê Do - na no - bis. The fourth staff continues with lyrics: pa - cem. — Ê Do - na no -. The fifth staff concludes with lyrics: bis pa - cem. — Ê and a 'Fine' marking.

VERSES:

Musical notation for the Verses, consisting of one staff with six numbered lines of lyrics. The lyrics are: 1. Give us peace, God, — Ê peace for all, 2. God of near - ness, — Ê God of life, 3. Set us free, God, from mind - less ways; 4. You re - new us — Ê with great love; 5. Be our breath, God, — Ê deep and pure; 6. Ma - ra - na - tha: — Ê come to us. The staff concludes with a 'to Refrain' marking.

© 1994, Gregory Norbet. Published by OCP, 5536 NE Hassalo, Portland, OR 97213. All rights reserved.

For reprint permissions, please visit OneLicense.net or contact us at 1-800-663-1501.