

# Lord Emmanuel, Come

Peter McGrail

INTRO *Allegro* (♩ = 144-152)

VERSES

Keyboard

1. Bright and clear, as a  
 2. Take your stand on a  
 3. See, he comes in—

1. trum - pet blast, a her - ald shout goes out:  
 2. loft - y place, Mes - sen - ger of God.  
 3. pow'r and might, Mas - ter of all things.

1. drive a path through the wil - der - ness, a high-way for our God;  
 2. Shout, O shout with a voice of joy, cast all fear a - side.  
 3. See, the Lord of — Vic - to - ries, he the King of Kings.

© 1996, 2002, Peter McGrail. Published by OCP Publications, 5536 NE Hassalo, Portland, OR 97213. All rights reserved.

1. hills and moun-tains to be laid low, the val - ley lift - ed high,  
 2. Say to all in Je - ru - sa - lem, the cit - y of the Lord:  
 3. Shep - herd - like he will feed his flock and take them to his arms,

1. ev - 'ry na - tion and land shall see the glo - ry of our God.  
 2. 'Look a - round you, the hour has come: See, here is your God.'  
 3. lead - ing them to a place of rest, Sav - iour, King and God.

## REFRAIN

Come, Lord, to a world of long - ing, lis - ten — to cre - a - tion's cry;

An - swer na - ture's deep - est yearn - ing; man - i - fest God's reign.

This system contains the first two staves of music. The top staff is the vocal line, and the bottom staff is the piano accompaniment. The key signature has one sharp (F#) and the time signature is 4/4. The lyrics are: "An - swer na - ture's deep - est yearn - ing; man - i - fest God's reign."

Come, Lord, shin - ing star of morn - ing, rise up, — scat - ter death's dark shade.

This system contains the second two staves of music. The top staff is the vocal line, and the bottom staff is the piano accompaniment. The key signature has one sharp (F#) and the time signature is 4/4. The lyrics are: "Come, Lord, shin - ing star of morn - ing, rise up, — scat - ter death's dark shade."

Come, Lord, might - y King E - ter - nal! Je - sus, Em - man - u -

This system contains the third two staves of music. The top staff is the vocal line, and the bottom staff is the piano accompaniment. The key signature has one sharp (F#) and the time signature is 4/4. The lyrics are: "Come, Lord, might - y King E - ter - nal! Je - sus, Em - man - u -"

Lord Emmanuel, Come

The image displays a musical score for the hymn "Lord Emmanuel, Come". It consists of two systems of staves. The first system includes a vocal line and a piano accompaniment line. The vocal line is in treble clef with a key signature of one sharp (F#) and a common time signature. It features two measures of rest, followed by a repeat sign and a final measure containing the lyrics "el!". The piano accompaniment is in bass clef with a key signature of one sharp and a common time signature, starting with a whole note chord. The second system also includes a vocal line and a piano accompaniment line. The vocal line has two measures of rest, followed by a melodic line with a slur over the notes, a repeat sign, and a final measure with the lyrics "el!". The piano accompaniment features a melodic line in the right hand and a bass line in the left hand, both with slurs and repeat signs, ending with a final measure.

Preview

# Lord Emmanuel, Come

(Guitar/Vocal)

Peter McGrail

INTRO *Allegro* (♩ = 144 - 152)

VERSES

Em A6/E Em7 A/E Em A6/E

1. Bright and clear, as a
2. Take your stand on a
3. See, he comes in \_\_\_\_\_

Em7 E7 Am7 Am/C Bsus4 Bm7

1. trum - pet blast, a her - ald shout goes out: \_\_\_\_\_
2. loft - y place, Mes - sen - ger of God. \_\_\_\_\_
3. pow'r and might, Mas - ter of all things. \_\_\_\_\_

Em A/E Dm/E E7 Am7 Am/C Em/B B

1. drive a path through the wil - der - ness, a high - way for our God; \_\_\_\_\_
2. Shout, O shout with a voice of joy, cast all fear a - side. \_\_\_\_\_
3. See, the Lord of \_\_\_\_\_ Vic - to - ries, he the King of Kings. \_\_\_\_\_

C D7 G Am7 F#dim7 B B7

1. hills and moun - tains to be laid low, the val - ley lift - ed high, \_\_\_\_\_
2. Say to all in Je - ru - sa - lem, the cit - y of the Lord: \_\_\_\_\_
3. Shep - herd - like he will feed his flock and take them to his arms, \_\_\_\_\_

Em D C Em7/B Am G Bsus4/F# B

1. ev - 'ry na - tion and land shall see the glo - ry of our God. \_\_\_\_\_
2. 'Look a - round you, the hour has come: See, here is your God.' \_\_\_\_\_
3. lead - ing them to a place of rest, Sav - iour, King and God. \_\_\_\_\_

## REFRAIN

Em B Em D

Come, Lord, to a world of long - ing, lis - ten to cre - a - tion's cry;

G D Em A7 B B7

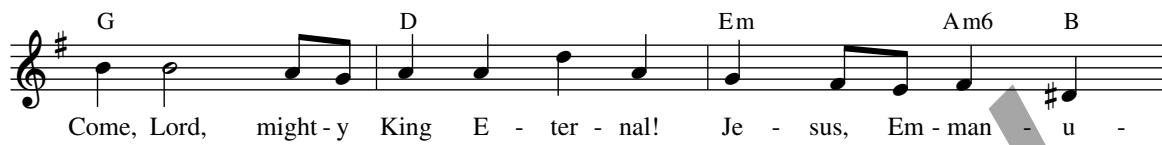
An - swer na - ture's deep - est yearn - ing; man - i - fest God's reign.

Em B Em D



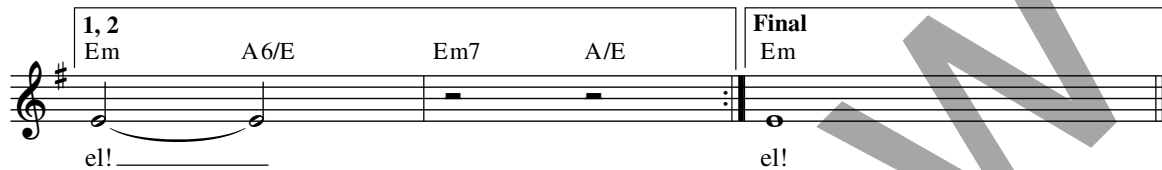
Come, Lord, shin-ing star of morn-ing, rise up, scat-ter death's dark shade.

G D Em Am6 B



Come, Lord, might-y King E - ter - nal! Je - sus, Em - man - u -

1, 2 Final  
Em A6/E Em7 A/E Em



el! \_\_\_\_\_ el! \_\_\_\_\_

## Assembly Edition

### LORD EMMANUEL, COME

Peter McGrail

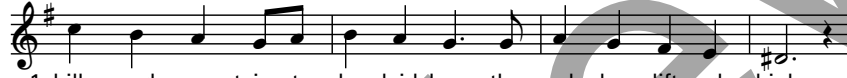
#### VERSES



1. Bright and clear, as a trum-pet blast, a her-ald shout goes out:
2. Take your stand on a loft-y place, Mes-sen-ger of God.
3. See, he comes in pow'r and might, Mas-ter of all things.



1. drive a path through the wil-der-ness, a high-way for our God;
2. Shout, O shout with a voice of joy, cast all fear a-side.
3. See, the Lord of Vic-to-ries, he the King of Kings.



1. hills and moun-tains to be laid low, the val-ley lift-ed high,
2. Say to all in Je-ru-sa-lem, the cit-y of the Lord:
3. Shep-herd-like he will feed his flock and take them to his arms,



1. ev-'ry na-tion and land shall see the glo-ry of our God.
2. 'Look a-round you, the hour has come: See, here is your God.'
3. lead-ing them to a place of rest, Sav-iour, King and God.

#### REFRAIN



Come, Lord, to a world of long-ing, lis-ten to cre-a-tion's cry;



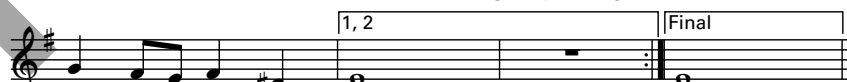
An-swer na-ture's deep-est year-ning; man-i-fest God's reign.



Come, Lord, shin-ing star of morn-ing, rise up, scat-ter



death's dark shade. Come, Lord, might-y King E-ter-nal!



Je-sus, Em-man-u-el!

el!

© 1996, 2002, Peter McGrail. Published by OCP Publications, 5536 NE Hassalo, Portland, OR 97213.  
All rights reserved.

For reprint permissions, please visit [OneLicense.net](http://OneLicense.net) or contact us at 1-800-663-1501.