

OCP Choral Series

Christmastide Carol

for David

Assembly, SATB or Two-Part Choir, Descant, Keyboard, Guitar, Flute, B \flat Trumpet, and Handbells

M. D. Ridge

Keyboard Accompaniment by Randall DeBruyn

INTRO: (♩ = 152-176)

Keyboard

© 1992, M. D. Ridge. Published by OCP, 5536 NE Hassalo, Portland, OR 97213. All rights reserved.

REFRAIN:
Descant

Chris - tus na - tus est! Chris - tus

1.-8. Ho - di - e Chris - tus na - tus est! Ho - di - e Chris - tus

Alto

Tenor

Bass

na - tus est! De - o gra - ti - as!

1.-8. na - tus est!

1. Ex Ma - ri - a vir - gi - ne,
2. Su - per ter - ram mag - na lux!
3. Lux ful - ge - bit su - per nos!
4. Stel - lam e - jus vi - di - mus!
5. Ve - ni - te in Beth - le - hem!
6. Sur - ge, Je - ru - sa - lem!
7. Chris - tus rex, Em - man - u - el!
8. Om - nes gen - tes, gau - de - te!

Chris - tus na - tus est!

1-8. Ho - di - e Chris - tus na - tus est!

to Verses

Final (choir only)

Ho - di - e Chris - tus na - tus est!

to Verses

Final (choir only)

Ho - di - e Chris - tus na - tus est!

to Verses

Final

Fine

VERSES:

Melody

Harmony
1.-8. Christ, our light, has come to the world!

1. Now the prom - ise is ful - filled.
2. Sign of faith - ful cov - e - nant.
3. Lift your eyes to heav'n and see.
4. Now with kings and shep - herds kneel.
5. Hope of all who long for peace.
6. Sun of jus - tice, Son of God.
7. Maj - es - ty in man - ger lies.
8. Let the joy - ful song re - sound.

1.-6. *Born to - day is Christ, the Lord:
7. Born to - day is Christ, our Lord, and
8. Born to - day is Christ, the Lord:

*"Born to us" may be substituted in any verse.

D.S.

1. born of Vir - gin Ma - ry.
 2. On the earth shines a great light.
 3. Light will dawn up - on us.
 4. We have seen his star.
 5. Come, to Beth - le - hem, come!
 6. O Je - ru - sa - lem, rise up!
 7. King, God liv - ing a - mong us!
 8. All you na - tions, re - joice! (to Refrain 1 and Final Ending)

D.S.

Performance Notes

The Renaissance feel of this carol demands a light, bright sense of rhythm. Diction is crucial, with clean vowels and crisp consonants. Roll the R's slightly on *Christus, Maria, terram, super*: standard American R's will make the Latin sound limp and dull.

Pronunciation Guide to the Latin phrases

a = ah (father)	gi = ji (gee)	i = ee (liter)	j = y (yeh-rusalem)
e = eh (let)	ge = jeh (gentle)	u = oo (too)	au = ow (how)

The last four measures of the Verse translate measures 9-12 of the preceding Refrain. Measures 9-12 of the Refrain may be sung by choir alone, if desired. If only selected Refrains are to be sung, the corresponding Verses must be sung, e.g., Refrain 1, Verse 1; Refrain 5, Verse 5.

For use through Epiphany, "Born to us" may be substituted for the words "Born today."

Use variations. For example, if men sing Verse 2, have women do Refrain 3 in two parts.

Don't get too complicated; this *zips* along and it's easy to get lost.

Handbells should not be used simultaneously with other instruments, nor should they be used on *all* Refrains and Verses. Highlight one or two Refrains. (Verses optional) For a simpler arrangement, just play the notes of the chord in each measure: for example, for a D chord, those who have D, F#, and A bells play them. The last four measures of the Refrain, the handbells can repeat the "Hodie Christus natus est!" which the singers have just finished:

Ho - di - e Chris - tus na - tus est!

– M.D.R.

Christmastide Carol

for David
(Guitar/Vocal)

M. D. Ridge

INTRO: (♩ = 152-176)

***REFRAIN:**

Melody D G C D G

Harmony

1.-8. Ho - di - e Chris - tus na - tus est! Ho - di - e Chris - tus

E A D G E A

1.-8. na - tus est!

1. Ex - Ma - ri - a vir - gi - ne,
2. Su - per ter - ram mag - na lux!
3. Lux - ful - ge - bit su - per nos!
4. Stel - lam e - jus vi - di - mus!
5. Ve - ni - te in Beth - le - hem!
6. Sur - ge, Je - ru - sa - lem!
7. Chris - tus rex, Em - man - u - el!
8. Om - nes gen - tes, gau - de - te!

D G C D

1.-8. Ho - di - e Chris - tus na - tus est!

C D

to Verses

Final (choir only)
(D) G C D

rit. Fine

Ho - di - e Chris - tus na - tus est!

© 1992, 1993, M. D. Ridge. Published by OCP, 5536 NE Hassalo, Portland, OR 97213. All rights reserved.

*This two-part version of the Refrain is different from the SATB version.
However, both versions are compatible with the Keyboard and Guitar accompaniments.

VERSES:

1.-8. Christ, our light, has come to the world!

1. Now the promise is fulfilled.
 2. Sign of faith - ful covenant.
 3. Lift your eyes _____ to heav'n and see.
 4. Now with kings _____ and shep - herds kneel.
 5. Hope of all _____ who long for peace.
 6. Sun of jus - tice, Son of God.
 7. Maj - es - ty _____ in man - ger lies.
 8. Let the joy - ful song re - sound.

1.-6. *Born to - day is Christ, _____ the Lord: _____
 7. Born to - day is Christ, _____ our Lord, and
 8. Born to - day is Christ, _____ the Lord: _____

1. born of Vir - gin Ma - ry.
 2. On the earth shines a great light.
 3. Light will dawn _____ up - on us.
 4. We have seen _____ his star.
 5. Come, to Beth - le - hem, come! _____
 6. O Je - ru - sa - lem, rise up!
 7. King, God liv - ing a - mong us!
 8. All you na - tions, re - joice! _____ (to Refrain 1 and Final Ending)

*"Born to us" may be substituted in any verse.

Christmastide Carol

FLUTE

M. D. Ridge

INTRO: (♩ = 152-176)

REFRAIN: Variation I

The musical score for the Intro and Refrain Variation I consists of five staves of music. The key signature is one sharp (F#) and the time signature is 3/4. The Intro begins with a five-measure rest, followed by a two-measure rest, and then a two-measure rest. The Refrain Variation I starts with a repeat sign and a first ending bracket. The melody is written in a treble clef and features a mix of quarter and eighth notes. A large 'Preview' watermark is overlaid diagonally across the score.

VERSES 1, 3, 5, 7:

The musical score for Verses 1, 3, 5, and 7 consists of two staves of music. The key signature is one sharp (F#) and the time signature is 3/4. The melody is written in a treble clef and features a mix of quarter and eighth notes. A large 'Preview' watermark is overlaid diagonally across the score.

REFRAIN: Variation II

The musical score for Refrain Variation II consists of two staves of music. The key signature is one sharp (F#) and the time signature is 3/4. The melody is written in a treble clef and features a mix of quarter and eighth notes. A large 'Preview' watermark is overlaid diagonally across the score.



VERSES 2, 4, 6, 8:



(last time to Final Refrain)



FINAL REFRAIN:



rit.

Christmastide Carol

B \flat TRUMPET

M. D. Ridge

INTRO: ($\text{♩} = 152-176$)

REFRAIN:

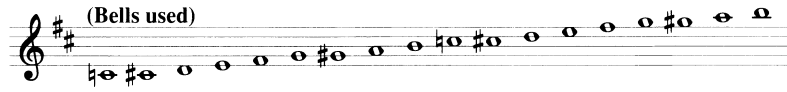
VERSES: Tacet
(last time to Final Refrain)
16 D.S.

FINAL REFRAIN:

Christmastide Carol

*HANDBELLS

M. D. Ridge

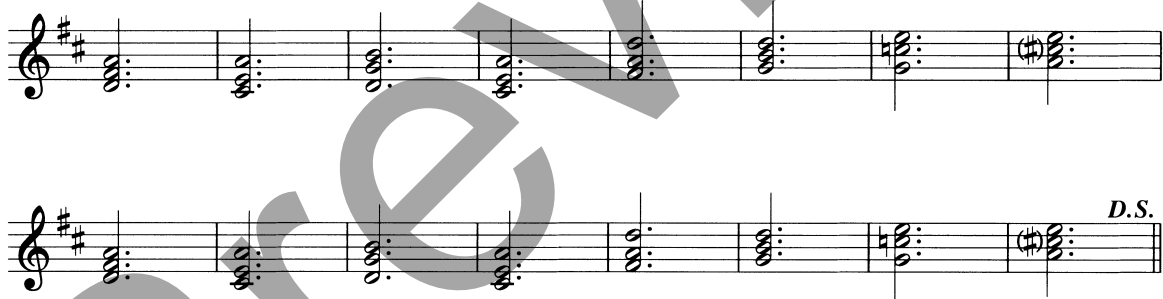


INTRO: (\downarrow = 152-176)

REFRAIN:



VERSES: (Optional)



© 1992, M. D. Ridge. Published by OCP, 5536 NE Hassalo, Portland, OR 97213. All rights reserved.

*See Performance Notes.

Assembly Edition

CHRISTMASTIDE CAROL

M. D. Ridge

REFRAIN:

1-8. Ho - di - e Chris - tus na - tus est! Ho - di - e Chris - tus

- 1-8. na - tus est!
- | | |
|---|----------------------------------------|
| } | 1. Ex Ma - ri - a vir - gi - ne, |
| | 2. Su - per ter - ram mag - na lux! |
| | 3. Lux ful - ge - bit su - per nos! |
| | 4. Stel - lam e - jus vi - di - mus! |
| | 5. Ve - ni - te in Beth - le - hem! |
| | 6. Sur - ge, Je - ru - sa - lem! |
| | 7. Chris - tus rex, Em - man - u - el! |
| | 8. Om - nes gen - tes, gau - de - te! |

1-8. Ho - di - e Chris - tus na - tus est!

Fine VERSES:

1-8. Christ, our light, has come to the world!

- | | | | | | |
|----|---------------|------|-------------|-----------------|---------------------|
| 1. | Now | the | prom - ise | is | ful - filled. |
| 2. | Sign | of | faith - ful | cov - e - nant. | |
| 3. | Lift | your | eyes | to | heav'n and see. |
| 4. | Now | with | kings | and | shep - herds kneel. |
| 5. | Hope | of | all | who | long for peace. |
| 6. | Sun | of | jus - tice, | Son | of God. |
| 7. | Maj - es - ty | in | man - ger | lies. | |
| 8. | Let | the | joy - ful | song | re - sound. |

1-6. *Born to - day is Christ, _____ the Lord: _____
 7. Born to - day is Christ, _____ our Lord, and
 8. Born to - day is Christ, _____ the Lord: _____

to Refrain

1.	born	of	Vir - gin	Ma - ry.
2.	On	the	earth	shines a great light.
3.	Light	will	dawn _____ up - on us.	
4.	We	have	seen _____ his star.	
5.	Come,	to	Beth - le - hem,	come! _____
6.	O	Je - ru - sa - lem,	rise	up!
7.	King,	God	liv - ing	a - mong us!
8.	All	you	na - tions,	re - joice! _____

© 1996, M. D. Ridge. Published by OCP, 5536 NE Hassalo, Portland, OR 97213. All rights reserved.

**"Born to us" may be substituted in any verse.

For reprint permissions, please visit OneLicense.net or contact us at 1-800-663-1501.