



for Sue Pontin

# Silent Night

Joseph Mohr, 1792–1848  
Trans. by John F. Young, 1820–1885

Franz Xaver Grüber, 1787–1863  
Arranged by Christopher Walker

**INTRO: Optional**  
*Gently*  
*p legato*

Keyboard

*mf* *pp*

Ped.

**VERSE 1: Assembly sings with Sopranos**  
Soprano/Melody *ppp*

Alto

1. Si - lent night! Ho - ly night! All is calm, \_\_\_\_\_

Tenor

Bass *ppp*

This arrangement © 1991, Christopher Walker. Published by OCP, 5536 NE Hassalo, Portland, OR 97213. All rights reserved.

May be sung in unison with keyboard playing SATB parts.

no breath

1. all is bright Round yon Vir - gin Moth - er and child!

no breath

1. Ho - ly In - fant so ten - der and mild, Sleep in heav - en - ly

1. peace, Sleep in heav - en - ly peace.

*p*

*p*

VERSE 2: Assembly or male soloist sings melody

Melody *mf*

2. Si - lent night! Ho - ly night! Shep - herds quake

Soprano semi-chorus *mp*

2. Si - lent night! Ho - ly night! Shep - herds

Soprano *pp*

Alto *pp*

\*2. Ahh

Tenor *pp*

Bass *pp*

2. at the sight; Glo - ries stream from heav - en a - far;

2. quake. Glo - ries stream from heav - en a -

2. Ahh

*mf*

\*Or sing unison melody; keyboard play SATB parts.

*f*

2. Heav'n - ly hosts \_\_\_ sing "Al - le - lu - ia! Christ the Sav - ior is

*f*

2. far: "Al - le - lu - ia, \_\_\_ al - le - lu - ia, \_\_\_ al - le -

*f*

2. Ahh \_\_\_ Ahh \_\_\_

*f*

*p*

2. born, \_\_\_ Christ \_\_\_ the Sav - ior is born."

*p*

2. lu - ia, Christ \_\_\_ the Sav - ior is born."

*p*

2. \_\_\_ Ahh \_\_\_

*p*

*div.*

*p*

VERSE 3: Assembly sings with Sopranos

VERSE 4: Choir only sings "ahh"; instrumental obbligato

Solo Instrument

*p*

Soprano  
3. Si - lent night! Ho - ly night! Son of God,

*pp*

Alto  
3. Si - lent night! Ho - ly night! Son of God,

3. Si - lent night! Ho - ly night of God,

Tenor

Bass *pp*  
3. Si - lent night! Ho - ly night! Son of God,

*mp* *pp*

3. love's pure light Ra - diant beams from thy ho - ly face,

*pp*

3. With the dawn of re - deem - ing grace, Je - sus, Lord, at thy

*p*

*p*

Detailed description: This system contains the first three staves of the musical score. The top staff is the vocal line, the middle staff is the right-hand piano accompaniment, and the bottom staff is the left-hand piano accompaniment. The music is in 3/4 time and B-flat major. The lyrics '3. With the dawn of re - deem - ing grace, Je - sus, Lord, at thy' are written below the vocal staff. Dynamics include a piano (*p*) marking in the piano accompaniment.

*mf* *à niente* *Fine*

*mf* *ppp last time à niente* *D.S. (Fine)*

3. birth, Je - sus, Lord, at thy birth.

*mf* *last time à niente ppp* *D.S.*

Detailed description: This system contains the next three staves of the musical score. The top staff is the vocal line, the middle staff is the right-hand piano accompaniment, and the bottom staff is the left-hand piano accompaniment. The lyrics '3. birth, Je - sus, Lord, at thy birth.' are written below the vocal staff. Dynamics include mezzo-forte (*mf*), piano (*p*), and pianissimo (*ppp*). Performance instructions include 'à niente' (fade out), 'D.S. (Fine)', and 'last time à niente'.

# Silent Night

SOLO INSTRUMENT\*

Christopher Walker

INTRO: Optional

*Gently*

5

VERSE 1: Tacet

12

VERSE 2: Tacet

12

VERSE 3: Tacet

12

... heavenly peace.

... Savior is born.

... Lord, at thy birth.

VERSE 4: *Distantly*

*p*

*mp*

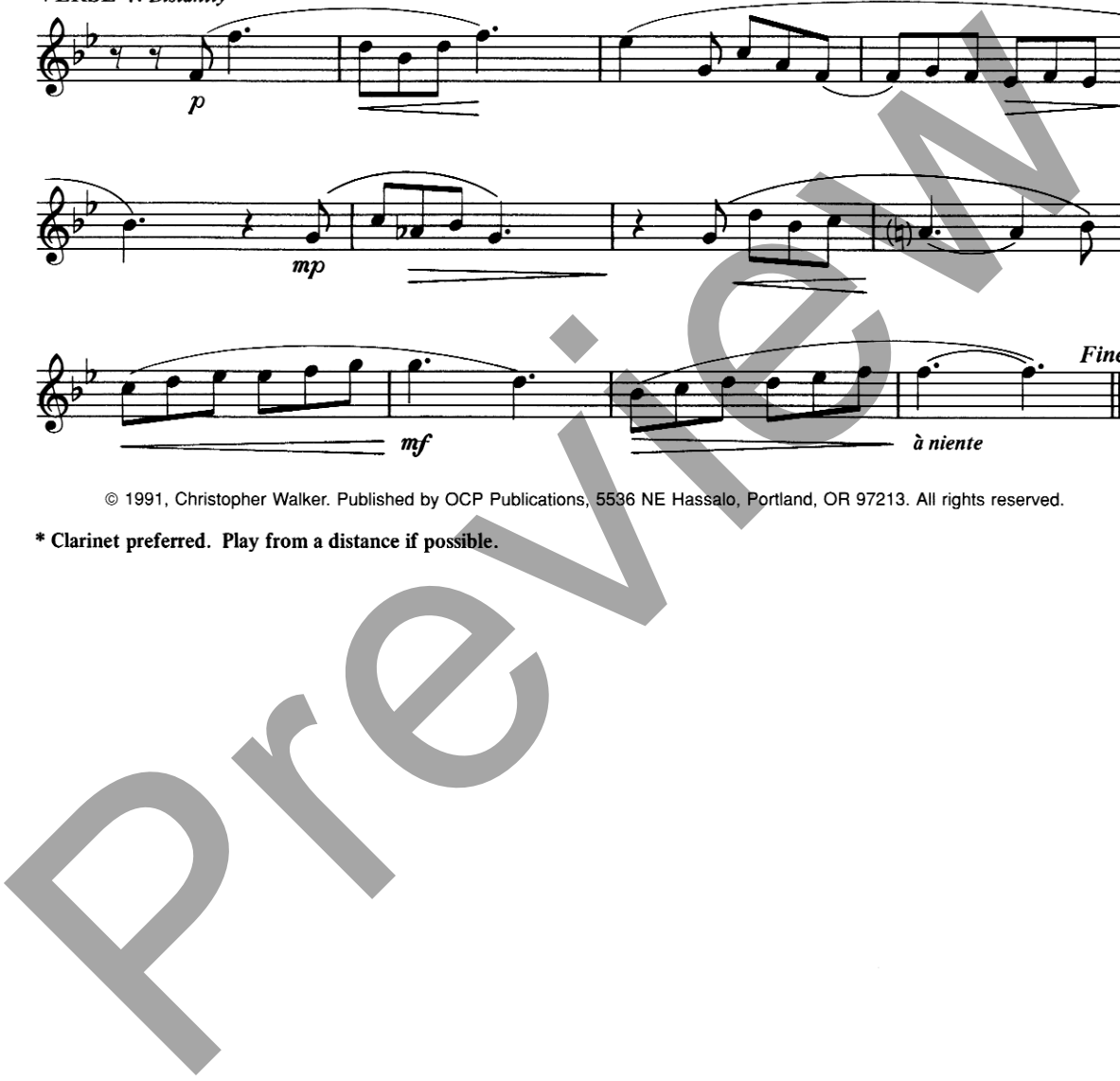
*mf*

*à niente*

*Fine*

© 1991, Christopher Walker. Published by OCP Publications, 5536 NE Hassalo, Portland, OR 97213. All rights reserved.

\* Clarinet preferred. Play from a distance if possible.



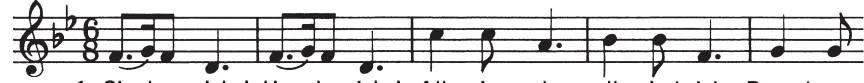
## Assembly Edition

### SILENT NIGHT

Joseph Mohr, 1792–1849

Franz Xaver Grüber, 1787–1863

Trans. by John F. Young (1820–1885)



1. Si - lent night! Ho - ly night! All is calm, all is bright Round yon
2. Si - lent night! Ho - ly night! Shep - herds quake at the sight; Glo - ries
3. Si - lent night! Ho - ly night! Son of God, love's pure light Ra - diant



1. Vir - gin Moth - er and child! Ho - ly In - fant so ten - der and mild,
2. stream from heav - en a - far; Heav'n - ly hosts sing "Al - le - lu - ia!
3. beams from thy ho - ly face, With the dawn of re - deem - ing grace,



1. Sleep in heav - en - ly peace, — Sleep in heav - en - ly peace.
2. Christ the Sav - ior is born, — Christ the Sav - ior is born."
3. Je - sus, Lord, at thy birth, — Je - sus, Lord, at thy birth.

For reprint permissions, please visit [OneLicense.net](http://OneLicense.net) or contact us at 1-800-663-1501.