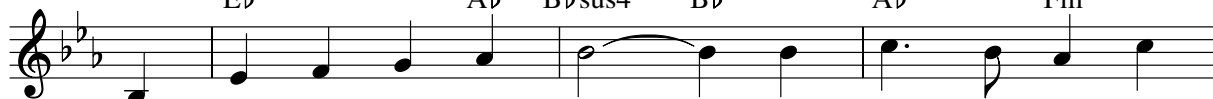


# THIS JOYFUL EASTERTIDE

## VERSES

Capo 1: (D) Eb (G) Ab (Asus4) Bb sus4 (A) Bb (G) Ab (Em) Fm



1. This joy - ful Eas - ter - tide, \_\_\_\_\_ A - way with sin and  
 2. Death's flood has lost its chill, \_\_\_\_\_ Since Je - sus crossed the  
 3. My flesh in hope shall rest, \_\_\_\_\_ And for a sea - son

(A) Bb (D) Eb (Asus4) Bb sus4 (A) Bb (D) Eb (G) Ab (Asus4) Bb sus4 (A) Bb



1. sor - row! My Love, the Cru - ci - fied, \_\_\_\_\_ Has  
 2. riv - er: Lord of all life, from ill \_\_\_\_\_ My  
 3. slum - ber, Till trump from east to west \_\_\_\_\_ Shall

## REFRAIN

(G) Ab (Em) Fm (A) Bb (D) Eb (Asus4) Bb sus4 (A) Bb (D) Eb (A) Bb (Em) Fm



1. sprung to life this mor - row. Had Christ, that once was  
 2. pass - ing life de - liv - er.  
 3. wake the dead in num - ber.

(A) Bb (D) Eb (G) Ab (E) sus4 F (A) Bb (D) Eb (Em) Fm (B7) C7



slain, Ne'er burst his three - day pris - on, Our faith had been in

(Em) Fm (E7) F7 (A) Bb (D) Eb (G) Ab (A) Bb (F#m) Gm (Bm) Cm



vain; But now is Christ a - ris - en, a - ris - en, a -

(G) Ab (A) Bb (D) Eb (G) Ab (D) Eb (Asus4) Bb sus4 (A) Bb (D) Eb



ris - en, a - ris - en.

Note: When guitar and keyboard play together, keyboardists should improvise using the guitar chords above the melody.

Text: 67 67 with refrain; George R. Woodward, 1848-1934.

Music: VREUCHTEN; Oudaen's *David's Psalmen*, 1685, alt.; guitar acc. © 1995, OCP. All rights reserved.

30117177

Edition #30117177