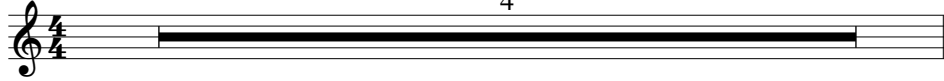


SANTO/HOLY

Intro (♩ = ca. 116)

4



Soprano
Contralto
San - to, San - to, San - to es el Se - ñor, — Dios del u - ni - ver - so.*
Tenor
Bajo

Soprano
Alto
Ho - ly, Ho - ly, Ho - ly — Lord — God of hosts. —
Tenor
Basso

Lle - nos es - tán el cie - lo y la tie - rra de tu glo - ria. Ho -

Heav - en and earth are — full — of your glo - ry.* Ho -

Note: To sing bilingually, begin in Spanish and switch languages at the asterisks.

SANTO/HOLY, cont. (2)

san - na en el cie - lo. Ho - san - na en el cie - lo.* Ben -

san - na in the high - est. Ho - san - na in the high - est.

di - to el que vie - ne en nom - bre del Se - ñor. Ho -

Bless - ed is he who comes in the name of the Lord.* Ho -

SANTO/HOLY, cont. (3)

The image shows a musical score for a choral piece. It consists of two systems of music. Each system has a vocal line (treble clef) and a piano accompaniment line (bass clef). The key signature is one sharp (F#), and the time signature is 4/4. The lyrics are written below the vocal line. The first system has the lyrics: "san - na en el cie - lo. Ho - san - na en el cie - lo." The second system has the lyrics: "san - na in the high - est. Ho - san - na in the high - est." The piano accompaniment consists of chords and some moving lines in the bass.

Text: Spanish, *Misal Romano, tercera edición* © 2014, US Conference of Catholic Bishops – Conferencia Episcopal Mexicana. All rights reserved. Used with permission. English © 2010, ICEL. All rights reserved. Used with permission.
Music: *Misa Santa Fe*; Mary Frances Reza; choral arr. by Peter M. Kolar, b. 1973, © 2009, 2011, Mary Frances Reza. Published by OCP. All rights reserved.