

# THE GOD OF ALL GRACE

TRUMPET I & II in B $\flat$

INTRO *With triumph and thanksgiving* ( $\text{♩} = 132 - 144$ )    REFRAIN: Cantor

I 11 16

II 11 16

REFRAIN

*f*

1-4 to Verses Final *Fine*

VERSES 1-4: Tacet Verses 1 and 2

7 *mp* *cresc.* *rit. last time* *D.S.*

7 *mp* *cresc.* *rit. last time*

Note: Intro is compatible with suggested bracketed Intro on keyboard and guitar accompaniments.

Music: Ricky Manalo, CSP, b. 1965, © 1996, Ricky Manalo, CSP. Published by OCP. All rights reserved.

30119028

Edition #30119028

HORN in F

INTRO *With triumph and thanksgiving* (♩ = 132 - 144)

REFRAIN: Cantor

11

16

Musical notation for the Intro and Refrain sections. The Intro consists of a 3-measure rest followed by a 4-measure rest, with a double bar line after the 7th measure. The Refrain begins with a treble clef, key signature of two flats (Bb and Eb), and a 3/4 time signature. It starts with a whole note G3, followed by a half note A3, and a quarter note Bb3. The melody continues with eighth notes: C4, D4, E4, F4, G4, A4, Bb4, C5, Bb4, A4, G4, F4, E4, D4, C4. The piece concludes with a half note G3 and a quarter note Bb3 tied to the next measure.

REFRAIN

Musical notation for the Refrain section, continuing from the previous block. It begins with a forte (*f*) dynamic. The melody continues with eighth notes: C4, D4, E4, F4, G4, A4, Bb4, C5, Bb4, A4, G4, F4, E4, D4, C4. The piece concludes with a half note G3 and a quarter note Bb3 tied to the next measure. A box labeled "1-4" spans the first four measures, and a box labeled "Final" spans the last two measures with a *Fine* marking.

VERSES 1-4: Tacet Verses 1 and 2

Musical notation for Verses 1-4. The first line shows a mezzo-piano (*mp*) dynamic and a melody of eighth notes: G3, A3, Bb3, C4, D4, E4, F4, G4, A4, Bb4, C5, Bb4, A4, G4, F4, E4, D4, C4. The second line continues with a *cresc.* marking and a melody of eighth notes: G3, A3, Bb3, C4, D4, E4, F4, G4, A4, Bb4, C5, Bb4, A4, G4, F4, E4, D4, C4. The piece concludes with a half note G3 and a quarter note Bb3 tied to the next measure, marked *rit. last time* and *D.S.*

Note: Intro is compatible with suggested bracketed Intro on keyboard and guitar accompaniments.

Music: Ricky Manalo, CSP, b. 1965, © 1996, Ricky Manalo, CSP. Published by OCP. All rights reserved.

THE GOD OF ALL GRACE (TROMBONE & BASS TROMBONE)

TROMBONE & BASS TROMBONE

INTRO *With triumph and thanksgiving* (♩ = 132 – 144) REFRAIN: Cantor

Musical notation for the Intro section, featuring two staves (I and II) with rests for 11 and 16 measures.

REFRAIN

Musical notation for the Refrain section, starting with a forte (*f*) dynamic.

Musical notation for the Refrain section, including markings for "1-4 to Verses", "Final", and "Fine".

VERSES 1-4: Tacet Verses 1 and 2

Musical notation for Verses 1-4, with a mezzo-piano (*mp*) dynamic.

Musical notation for Verses 1-4, including markings for *cresc.*, *rit. last time*, and *D.S.*

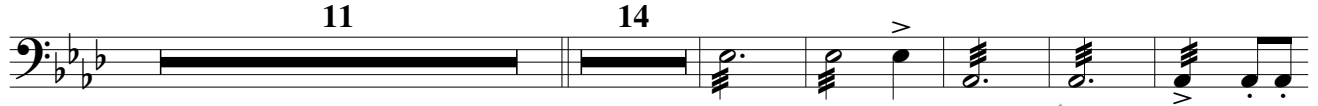
Note: Intro is compatible with suggested bracketed Intro on keyboard and guitar accompaniments.

Music: Ricky Manalo, CSP, b. 1965, © 1996, Ricky Manalo, CSP. Published by OCP. All rights reserved.

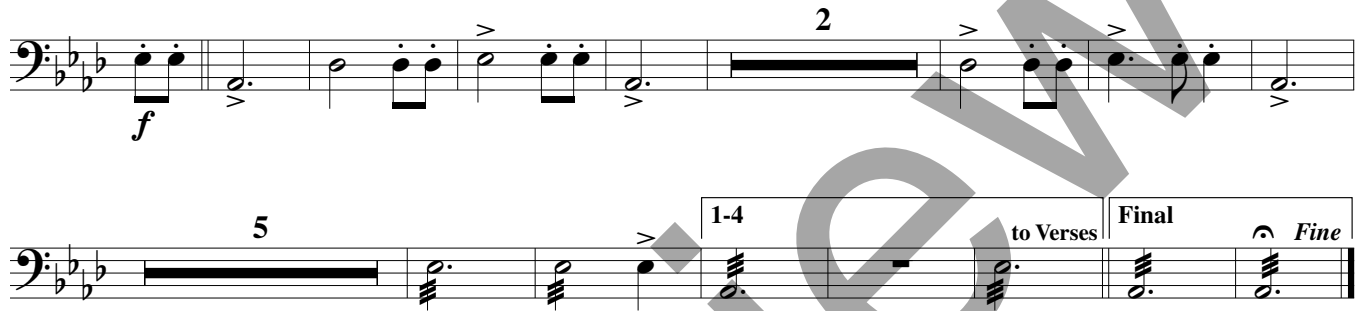
TIMPANI



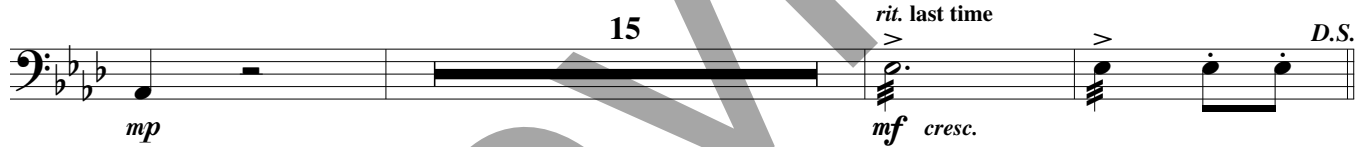
INTRO With triumph and thanksgiving (♩ = 132 - 144) REFRAIN: Cantor



REFRAIN



VERSES 1-4



Note: Intro is compatible with suggested bracketed Intro on keyboard and guitar accompaniments.

Music: Ricky Manalo, CSP, b. 1965, © 1996, Ricky Manalo, CSP. Published by OCP. All rights reserved.