

# LORD, HAVE MERCY

SOLO INSTRUMENT in C

(♩ = ca. 82)

Two staves of musical notation in G major, 4/4 time. The first staff begins with a treble clef, a key signature of one flat (F major), and a 4/4 time signature. The melody consists of quarter and eighth notes. The second staff continues the melody and includes a 'rit.' (ritardando) marking above the final notes.

Music: *Mass of the Sacred Heart*; Timothy R. Smith, b. 1960, © 2007, 2010, Timothy R. Smith. Published by OCP. All rights reserved.

# GLORY TO GOD

SOLO INSTRUMENT in C

(♩ = ca. 133)

♩ REFRAIN: 1st time: Cantor/Choir, All repeat; thereafter: All

Musical notation for 'GLORY TO GOD' in G major, 4/4 time. The first staff starts with a treble clef, a key signature of one flat (F major), and a 4/4 time signature. It includes a 'mf' (mezzo-forte) dynamic marking. The second staff is divided into three sections: '1' (first ending), '2-4' (second ending), and 'Final' (with 'to Verses' written below). It includes 'D.S.' (Da Capo) and 'Fine' markings. The third staff is labeled 'VERSE 1' and includes a '4' marking above the first measure. The fourth staff concludes with a 'D.S.' marking.

Music: *Mass of the Sacred Heart*; Timothy R. Smith, b. 1960, © 2007, 2010, Timothy R. Smith. Published by OCP. All rights reserved.

VERSE 2

VERSE 3

**W**  
**E**  
**M**  
**A**  
**S**

SOLO INSTRUMENT in C

REFRAIN: (♩ = ca. 90) 1st time: Cantor/Choir, All repeat; the 2nd time: All

VERSE

# HOLY

SOLO INSTRUMENT in C

(♩ = ca. 150)

Musical score for 'HOLY' in 3/4 time, C major. The score consists of five staves of music. A large, stylized 'HOLY' is superimposed over the first four staves. The fifth staff includes a Coda symbol (⊕ Coda) and a 'rit.' marking.

Music: *Mass of the Sacred Heart*; Timothy R. Smith, b. 1960, © 2007, 2010, Timothy R. Smith. Published by OCP. All rights reserved.

# DOXOLOGY AND AMEN

SOLO INSTRUMENT in C

Musical score for 'DOXOLOGY AND AMEN' in 2/4 time, C major. The score consists of two staves of music. A large, stylized 'DOXOLOGY AND AMEN' is superimposed over the first staff. The second staff includes an 'Optional repeat' section and a 'Final' section, both ending with a 'rit.' marking.

\*Optional Intro if Doxology is not sung.

Music: *Mass of the Sacred Heart*; Timothy R. Smith, b. 1960, © 2014, Timothy R. Smith. Published by OCP. All rights reserved.

# LAMB OF GOD

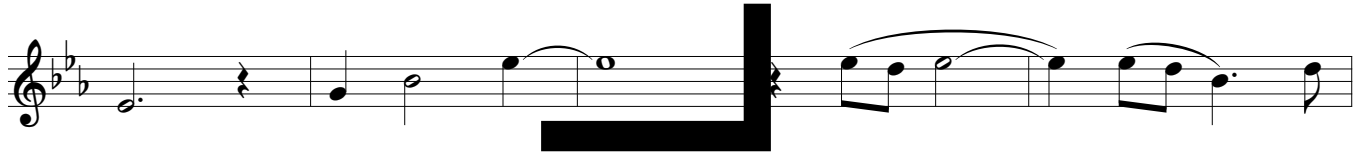
SOLO INSTRUMENT in C

OPTIONAL INTRO (♩ = ca. 78)

4



sins of the world *mp*



Music: *Mass of the Sacred Heart*; Timothy R. Smith, b. 1960, © 2007-2010 Timothy R. Smith. Published by OCP. All rights reserved.

S  
A  
M  
E  
L