

# OCP Choral Series

## The Seed That Falls On Good Ground

*Assembly, Cantor, SAB or SATB Choir, Descant, Keyboard, Guitar, and Solo Instrument*

Psalm 65

M. D. Ridge  
Keyboard Accompaniment by Rick Modlin

INTRO: (♩ = ca. 90)

Keyboard



© 1991, M.D. Ridge. Published by OCP Publications. Keyboard accompaniment © 1994, OCP Publications. All rights reserved.

From the recording BY CROSS AND WATER SIGNED Compact Disc #10060

MUSIC · WORSHIP · SERVICE

1.800.548.8749

ocp.org



♩ REFRAIN: 1st time: Cantor; Each time thereafter: All

Soprano/Melody

Tempo I

Alto

The seed that falls on good ground will yield a

Baritone

Tempo I

Tempo I

1 *D.S.* 2-5 to Verses

fruit - ful har - vest.

1 *D.S.* 2-5 to Verses

VERSE 1: Cantor or Sopranos (♩ = ca. 96)

1. You come to our land with life - giv - ing rain. \_\_\_\_\_

This system contains the first two measures of the vocal line and the corresponding piano accompaniment. The vocal line begins with a quarter rest, followed by a quarter note G4, a quarter note A4, a quarter note B4, and a half note C5. The piano accompaniment features a steady eighth-note bass line in the left hand and chords in the right hand.

1. \_\_\_\_\_ The riv - ers of heav - en o - ver - flow their banks.

This system contains the next two measures of the vocal line and piano accompaniment. The vocal line starts with a quarter rest, followed by a quarter note G4, a quarter note A4, a quarter note B4, and a half note C5. A triplet of eighth notes (G4, A4, B4) is marked above the notes. The piano accompaniment continues with similar rhythmic patterns, including a triplet of eighth notes in the right hand.

*D.S.*

This system contains the final two measures of the vocal line and piano accompaniment. The vocal line continues with a quarter note G4, a quarter note A4, a quarter note B4, and a half note C5. The piano accompaniment concludes with a final chord in the right hand and a sustained bass line in the left hand.

VERSES 2 & 3: Sopranos and Altos (♩ = ca. 96)

Soprano/Melody

Alto

2. The plow'd earth is read-y — to spring in - to  
 3. The prom - ise of spring — in har - vest ful -

2. life. You soft - en it with show - ers, give bless - ing to its  
 3. filled: your bount - y spill - ing o - ver til bar - ren lands have

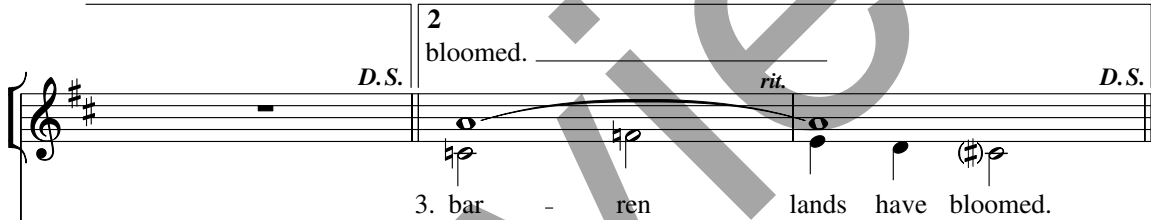
1 *div.* *rit.*

2. yield.



2 *D.S.* bloomed. *rit.* *D.S.*

3. bar - ren lands have bloomed.



*D.S.* 2 *D.S.* *rit.*



VERSE 4: SAB Choir (♩ = ca. 96)

Soprano/Melody

Alto

Baritone

4. A blan-ket of grain shines in the val-leys like

4. gold; flocks like a snow-y robe cov-er the

4. fields. The hill-sides are full of joy;

This system contains the first vocal line and piano accompaniment. The vocal line starts with a whole rest, followed by a quarter rest, then a triplet of eighth notes (G4, A4, B4) and a quarter note (C5). The piano accompaniment features a whole note chord (D4, F#4, A4) in the right hand and a quarter note (D3) in the left hand.

This system continues the piano accompaniment. The right hand plays chords and moving lines, while the left hand plays a steady eighth-note accompaniment. A triplet of eighth notes (G4, A4, B4) is marked in the right hand.

4. they sing to the Lord for joy. 4. Lord for joy.

*molto rit.*

This system contains the second vocal line and piano accompaniment. The vocal line begins with a quarter rest, followed by a quarter note (G4), a quarter note (A4), and a quarter note (B4), then a long note (C5) with a fermata. The piano accompaniment includes a triplet of eighth notes (G4, A4, B4) and a *molto rit.* marking.

*molto rit.*

This system continues the piano accompaniment, featuring a triplet of eighth notes (G4, A4, B4) and a *molto rit.* marking. The right hand plays chords and moving lines, while the left hand plays a steady eighth-note accompaniment.

## FINAL REFRAIN: All

Descant  
Tempo I

Soprano/Melody  
Tempo I

Alto

Baritone  
Tempo I

Tempo I

The \_ seed that falls will

The seed that falls on good ground will yield a

rise to har - vest. *Fine*

fruit - ful har - vest. *Fine*

*Fine*



## Performance Notes

Psalm 65 is the psalm for the 15th Sunday in Ordinary Time, year A; it is also appropriate for Thanksgiving, graduation, and evangelization.

The optional Descant may be used on any Refrain after Verse 1. Selected sopranos (one or two, at most) will work best.

The solo instrument part really adds a great deal, especially at the end of the Verses; it's intended to reinforce the feeling of the text.

The overall tone of *The Seed That Falls On Good Ground* is one of joyous, wondering thanksgiving. Give the triplets adequate emphasis.

—MDR

Preview

# The Seed That Falls On Good Ground

Psalm 65

M.D. Ridge  
Keyboard Accompaniment by Rick Modlin

OPTIONAL SATB REFRAIN: (♩ = ca. 90)

Tempo I

Descant

The \_\_\_ seed that

Melody

Soprano  
Alto

The seed that falls on good ground  
The seed that \_\_\_ falls on good

Tenor  
Bass

Tempo I

Keyboard

Tempo I

© 1991, M.D. Ridge. Published by OCP Publications, 5536 NE Hassalo, Portland, OR 97213  
Keyboard accompaniment © 1994, OCP Publications. All rights reserved.

falls will rise to har - vest. \_\_\_\_\_

will \_ yield a fruit - ful har - vest. \_\_\_\_\_

ground

1 D.C.

1 D.C.

1 D.C.

This system contains the first three staves of the musical score. The top staff is the vocal line, the middle two staves are the piano accompaniment (treble and bass clefs), and the bottom two staves are the piano accompaniment (treble and bass clefs). The key signature is one sharp (F#) and the time signature is 4/4. The lyrics are: 'falls will rise to har - vest. \_\_\_\_\_', 'will \_ yield a fruit - ful har - vest. \_\_\_\_\_', and 'ground'. The system includes first endings marked with a '1' and 'D.C.' (Da Capo).

rise to har - vest. \_\_\_\_\_

fruit - ful har - vest. \_\_\_\_\_

2 Fine

2 Fine

2 Fine

This system contains the next three staves of the musical score. The top staff is the vocal line, the middle two staves are the piano accompaniment (treble and bass clefs), and the bottom two staves are the piano accompaniment (treble and bass clefs). The key signature is one sharp (F#) and the time signature is 4/4. The lyrics are: 'rise to har - vest. \_\_\_\_\_', 'fruit - ful har - vest. \_\_\_\_\_', and 'Fine'. The system includes second endings marked with a '2' and 'Fine'.

# The Seed That Falls On Good Ground

(Guitar/Vocal)

Psalm 65

M.D. Ridge

INTRO: (♩ = ca. 90)

D G/A A D F#m G/B Asus4 A

The intro consists of a single staff in treble clef with a key signature of two sharps (F# and C#) and a 4/4 time signature. It contains eight measures of whole notes, each with a chord symbol above it: D, G/A, A, D, F#m, G/B, Asus4, and A.

REFRAIN: 1st time: Cantor; Each time thereafter: All

Melody Tempo I

D G Asus4 A7 D

The seed that falls on good ground will yield a

Descant Tempo I

The seed that falls will

The refrain section features two staves. The top staff is labeled 'Melody Tempo I' and contains a melody line with lyrics: 'The seed that falls on good ground will yield a'. Above the melody are chord symbols: D, G, Asus4, A7, and D. The bottom staff is labeled 'Descant Tempo I' and contains a descant line with lyrics: 'The seed that falls will'.

F#m G/B

1 Asus4 A D.S. 2-5 Asus4 A to Verses Final Asus4 A Dmaj7 Fine

fruit - ful har - vest.

1 D.S. 2-5 to Verses Final Fine

rise to har - vest.

This section continues the verse with two staves. The top staff has lyrics 'fruit - ful har - vest.' and the bottom staff has 'rise to har - vest.'. Above the top staff are chord symbols: F#m, G/B, and then a box containing '1 Asus4 A D.S.', '2-5 Asus4 A to Verses', and 'Final Asus4 A Dmaj7 Fine'. Above the bottom staff are chord symbols: '1 D.S.', '2-5 to Verses', and 'Final Fine'.

VERSE 1: Unison Choir or Cantor (♩ = ca. 96)

Gmaj7 A Gmaj7

1. You come to our land with life - giv - ing

The first line of Verse 1 has a single staff with lyrics '1. You come to our land with life - giv - ing'. Above the staff are chord symbols: Gmaj7, A, and Gmaj7.

A Gmaj7 G/B Em

1. rain. The riv - ers of heav - en o - ver-flow their

The second line of Verse 1 has a single staff with lyrics '1. rain. The riv - ers of heav - en o - ver-flow their'. Above the staff are chord symbols: A, Gmaj7, G/B, and Em.

Dmaj7 Gmaj7 Em7 Asus4 A D.S.

1. banks.

The third line of Verse 1 has a single staff with lyrics '1. banks.'. Above the staff are chord symbols: Dmaj7, Gmaj7, Em7, Asus4, and A. The section ends with 'D.S.'.

VERSES 2 & 3: Two-part Choir (♩ = ca. 96)

Gmaj7 A Gmaj7 A

2. The plow'd earth is read-y \_\_\_\_\_ to spring in - to life.  
 3. The prom - ise of spring \_\_\_\_\_ in har - vest ful - filled:

Gmaj7 G/B 1 Dmaj7 G/B

2. You soft - en it with show - ers, give bless - ing to its yield.  
 3. your bount - y spill - ing o - ver til bar - ren lands have

Em rit. Asus4 A 2 Fmaj7 rit. Asus4 A D.S.

3. bloomed. \_\_\_\_\_

VERSE 4: SAB Choir (♩ = ca. 96)

Gmaj7 A G 3 Gmaj7 3

4. A blan - ket of grain shines in the val - leys like

Dmaj7 Gmaj7 A Gmaj7 3

4. gold; flocks like a snow - y robe cov - er the

Dmaj7 Gmaj7 3 Dmaj7

4. fields. The hill - sides are full of joy;

G 3 Fmaj7 molto rit. Asus4 A D.S.

4. they sing to the Lord \_\_\_\_\_ for joy. \_\_\_\_\_

# The Seed That Falls On Good Ground

SOLO INSTRUMENT

M.D. Ridge

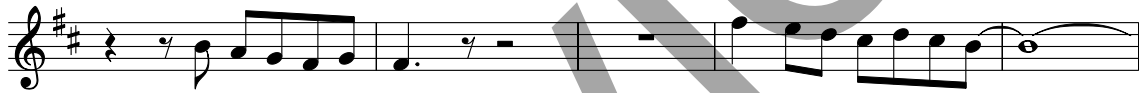
INTRO: ( $\text{♩} = \text{ca. } 90$ )

**REFRAIN:**

The seed that falls. . .

**VERSE 1:** ( $\text{♩} = \text{ca. } 96$ )

1. You come to our land. . .



**REFRAIN:** Tempo I

**VERSE 2:** ( $\text{♩} = \text{ca. } 96$ )

2. The plow'd earth. . .



*rit.*

REFRAIN: Tempo I

VERSE 3: (♩ = ca. 96)

3. The promise of seed. . .

REFRAIN: Tempo I

VERSE 4: (♩ = ca. 96)

4. A blanket of grain. . .

*molto rit.*

FINAL REFRAIN: Tempo I

Assembly Edition

### THE SEED THAT FALLS ON GOOD GROUND

M.D. Ridge

Ps 65

REFRAIN: 1st time: Cantor; Each time thereafter: All

The seed that falls on good ground will yield a fruit - ful har - vest.

*Fine*

VERSE 1:

1. You come to our land with life - giv - ing rain. to 3 Refrain

1. The riv - ers of heav - en o - ver - flow their banks.

VERSES 2 & 3:

2. The plow'd earth is read - y to spring in - to in har - vest ful -

3. filled: You soft - en it with show - ers, give your bount - y spill - ing o - ver til

© 1991, M.D. Ridge. Published by OCF Publications, 5536 NE Hassato, Portland, OR 97213. All rights reserved.

### THE SEED THAT FALLS ON GOOD GROUND (Continued)

1. bless - ing to its yield. 3 to Refrain 2 to Refrain

bar - ren lands have 3. bloomed. \_\_\_\_\_

VERSE 4:

4. A blan - ket of grain shines in the val - leys like 3

4. gold; flocks like a snow - y robe cov - er the 3

4. fields. The hill - sides are full of joy; to Refrain

4. they sing to the Lord \_\_\_\_\_ for joy.

For reprint permissions, please visit OneLicense.net or contact us at 1-800-663-1501.