

Mass of the Sacred Heart – Guitar/Vocal Edition

Timothy R. Smith

Dedicated to the Reverend Eugene R. Strain

© 2014, OCP

5536 NE Hassalo, Portland, OR 97213

(503) 281-1191 liturgy@ocp.org www.ocp.org

Excerpts from the English translation of *The Roman Missal* © 2010, International Commission on English in the Liturgy Corporation (ICEL), 1522 K Street NW, Suite 1000, Washington, DC 20005-1202; the English translation of some Alleluia verses and Lenten Gospel verses from *Lectionary for Mass* © 1969, 1981, 1997, ICEL. All rights reserved. Used with permission.

Some gospel verses from the *Lectionary for Mass for use in the Dioceses of the United States* © 1970, 1997, 1998, Confraternity of Christian Doctrine, Inc (CCD), 3211 4th St. NE, Washington, DC 20017. All rights reserved. Used with permission.

Published with the approval of the Committee on Divine Worship, United States Conference of Catholic Bishops, 3211 Fourth St. NE, Washington, DC 20017-1194; USCCB.org

None of the pages in this book may be reproduced in any way without written permission from the publisher.

Table of Contents

Lord, Have Mercy	3
Glory to God	4
Alleluia.....	6
Lenten Gospel Acclamation.....	7
Eucharistic Acclamations	
Holy.....	8
We Proclaim Your Death.....	9
When We Eat This Bread.....	9
Save Us, Savior.....	10
Doxology and Amen.....	11
Lamb of God.....	12

Mass of the Sacred Heart	
Keyboard/Choral Edition.....	ed. 30128165
Keyboard/Vocal Edition	ed. 30128167
Guitar/Vocal Edition	ed. 30128166
Choral Edition.....	ed. 30128162
Solo Instrument parts in C (online only)	ed. 30128168
Solo Instrument parts in B \flat (online only)	ed. 30128169
Full Score Manuscript Edition.....	ed. 30128170
Mass of the Sacred Heart – Expanded Digital Playlist	ed. 30128164
Mass of the Sacred Heart – CD	ed. 30128156

For reprintable Assembly Editions, please visit LicenSingOnline.org.

LORD, HAVE MERCY

(♩ = ca. 82)

Capo 1: (D) (G/B) (Gsus2) (A) (D) (G/B) (Gsus2) (A)
 Eb Ab/C Absus2 Bb Eb Ab/C Absus2 Bb

Cantor/Choir All

Lord, have mer - cy.

(Bm) (F#m) (Em7) (D/F#) (Em7/G) (A)
 Cm Gm Fm7 Eb/G Fm7/Ab Bb

Cantor/Choir All

Christ, have mer - cy.

(Em7) (D/F#) (Gsus2) (Bm) (Em7) (D/F#) (Gsus2) (A)
 Fm7 Eb/G Absus2 Bb Cm Fm7 Eb/G Absus2 Bb

Cantor/Choir All rit.

Lord, have mer - cy. Lord, have mer - cy.

Music: *Mass of the Sacred Heart*; Timothy R. Smith, b. 1960, © 2007, 2010, Timothy R. Smith. Published by OCP. All rights reserved.

SAM

GLORY TO GOD

(♩ = ca. 133)

♩ REFRAIN: 1st time: Cantor/Choir, All repeat; thereafter: All

Capo 3: (D) (A/D) (D) (A/D) (Gmaj7/D) (D) (G/B) (D/F#)
 F C/F F C/F Bbmaj7/F F Bb/D F/A

Glo-ry to God in the high-est, and on earth peace to

peo - ple of good will. *D.S.*

will. will. *Fine*

VERSE 1

1. We praise you, we bless you here you, we glo-ri - fy you, we


1. give you thanks for your great glo - ry, Lord God,

1. heav-en - ly King, O God, al-might - y Fa - ther. *D.S.*

Text © 2010, ICEL. All rights reserved. Used with permission.

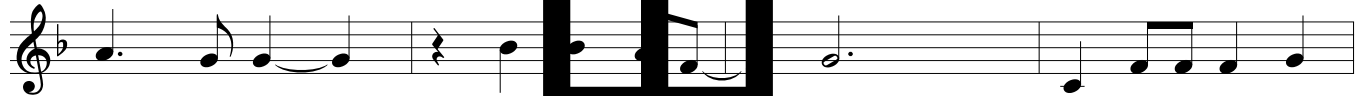
Music: *Mass of the Sacred Heart*; Timothy R. Smith, b. 1960, © 2007, 2010, Timothy R. Smith. Published by OCP. All rights reserved.

VERSE 2 (C) (G/B) (D/A) (Em7) (Gsus2) (Asus4) (C) (G/B)
 Eb Bb/D F/C Gm7 Bbsus2 C sus4 Eb Bb/D



2. Lord Je - sus Christ, On - ly Be - got - ten Son, Lord God,

(D/A) (Asus4) (A) (Em7) (Csus2) (Asus4) (Csus2)
 F/C C sus4 C Gm7 Bbsus2 C sus4 Ebsus2




2. Lamb of God, Son of the Fa - ther, you take a-way the

(G/B) (D/A) (Csus2)
 Bb/D F/C Ebsus2




2. sins of the world, have mer - cy on us; you take a-way the

(G/B) (Em7) (Asus4) (A) (C) (C)
 Bb/D Gm7 C sus4 C Eb



2. sins of the world, re - ceive you are seat - ed at the right -

(G/B) (Asus4) (D/A) (G/B) *D.S.*
 Bb/D C sus4 F/A Bb/D




2. hand of the Fa - ther, have mer - cy on us.

VERSE 3 (Em7) (D/F#) (Csus2) (Bm7)
 Gm7 F/A Ebsus2 Dm7




3. For you a-lone are the Ho - ly One you a-lone are the Lord,

(Em7) (D/F#) (Cadd2) (Asus2) (G/B) (A/C#)
 Gm7 F/A Eadd2 C sus2 Bb/D C/E



3. you a-lone are the Most High, Je - sus Christ, with the Ho - ly Spir - it, in the

(Em7) (D/F#) (Csus2) (G/B) *D.S. al fine*
 Gm7 F/A Ebsus2 Bb/D



3. glo-ry of God the Fa - ther. A - men. A - men.

ALLELUIA

REFRAIN: (♩ = ca. 90) 1st time: Cantor/Choir, All repeat; thereafter: All

Capo 1: (D) Eb (A/C#) Bb/D (G/B) Ab/C (D/A) Eb/Bb (G) Ab (D/A) Eb/Bb (A) Bb

Al - le - lu - ia, al - le - lu - ia,

1, (Gsus2) Absus2 1: D.C. 2: to Verse Final (Gsus2) Absus2 Fine

(Bm) Cm (Em) Fm

Al - le - lu - ia.

*VERSES

(D) Eb (G/B) Ab/C (A/C#) Bb/D (D) Eb

1. Speak, Lord, your servant is listening;
2. I am the way, the truth, and the life, Lord;
3. Let your face shine upon your servant,
4. Prepare the way of the Lord, make straight paths:
5. The Spirit of the LORD is upon me,
6. I proclaim to you good news of great joy:

(D) Eb (D/F#) Eb/G (G) Ab/C (D/F#) Eb/G (D) Eb (A/C#) Bb/D D.C. al fine

1. you have the words of everlasting life.
2. no one comes to the Father, except through me.
3. (-----) and teach me your laws.
4. all flesh shall see the manifestation of God.
5. because he has anointed me to bring glad tidings to the poor.
6. today a Savior is born for us, Christ the Lord.

*Most Gospel verses can be sung using this chanting tone.

Verses 1-3: Ordinary Time, Year ABC

Verses 4-5: Advent

Verse 6: Christmas

Text: Verses 1-4 © 1969, 1981, 1997, ICEL. All rights reserved. Used with permission. Verses 5, 6 © 1970, 1997, 1998, CCD. All rights reserved. Used with permission.
 Music: *Mass of the Sacred Heart*; Timothy R. Smith, b. 1960, © 2007, 2010, 2014, Timothy R. Smith. Published by OCP. All rights reserved.

LENTEN GOSPEL ACCLAMATION

REFRAIN: (♩ = ca. 90) 1st time: Cantor/Choir, All repeat; thereafter: All

Capo 1: (D) Eb (G/B) Ab/C (A) Bb (D/F#) Eb/G (G/B) Ab/C (G) Ab

Glo - ry and praise to you, _____

(Em7) Fm7 (D/F#) Eb/G (A) Bb

Lord Je - sus Christ!

1: D.C.
2: to Verse
(Fine)

***VERSES**

(D) Eb (G/B) Ab/C (A/C#) Bb/D (D) Eb

1. Repent, says the Lord;
2. One does not live on bread a - lone,

(D) Eb (D/F#) Eb/G (G) Ab (D/F#) Eb/G (D) Eb (A/C#) Bb/D D.C. al fine

1. the Kingdom of heaven is at hand.
2. but on every word that comes forth from mouth of God.

*Most Gospel verses can be sung using this chanting tone.

Text © 1969, 1981, 1997, ICEL. All rights reserved. Used with permission.

Music: *Mass of the Sacred Heart*; Timothy R. Smith, b. 1960, © 2007, 2010, Timothy R. Smith, published by OCP. All rights reserved.

HOLY

(♩ = ca. 150)

Capo 3: (D) F (A/D) C/F (G/D) Bb/F (D) F (A/C#) C/E

Ho - ly, Ho - ly, Ho - ly Lord God of

(G/B) Bb/D (G) Bb (Bm) Dm (F#m) Am (Csus2) Bsus2 (Em7) Gm7 (A) (Asus4) C Csus4

hosts. Heav-en and earth are all of your glo - ry. Ho -

(D/F#) F/A (G) Bb (Asus4) (A) Csus4 (Asus4) Csus4 (D/F#) F/A (G) Bb to Coda ⊕

san - na in the high - est. Ho - san - na in the

(Asus4) (A) Csus4 (A) C (F#m7) Am7 (Bm) Dm (A) C (G) Bb

high - est. Blessed is he who comes in the

(Em7) Gm7 (Em/G) Gm/Bb (G/B) Bb/D (A/C#) C/E (A) (Asus4) C Csus4

name of the Lord. Ho -

⊕ CODA

(Asus4) (A) Csus4 (A) C (D) F

high - est.

Text © 2010, ICEL. All rights reserved. Used with permission.

Music: *Mass of the Sacred Heart*; Timothy R. Smith, b. 1960, © 2007, 2010, Timothy R. Smith. Published by OCP. All rights reserved.

WE PROCLAIM YOUR DEATH

(♩ = ca. 80)
 Capo 1: (D/F#) Eb/G

Priest (Gsus2) Absus2 (Asus4) (A) Bbsus4 Bb (D) Eb All (G/B) (D/A) Ab/C Eb/Bb

The mys - ter - y of faith. — We pro - claim your

(G/B) (A) (F#m) (G)
 Ab/C Bb Gm Ab

Death, O Lord, and pro - fess your Res - ur -

(Em/B) (Bm) (A) (F#m) (Em7) (G) (D)
 Fm/C Cm Bb Gm Fm7 Ab Eb

rec - tion un - til you come a - gain.

Text © 2010, ICEL. All rights reserved. Used with permission.
 Music: *Mass of the Sacred Heart*; Timothy R. Smith, b. 1960, © 2007, 2010, Timothy R. Smith. Published by OCP. All rights reserved.

WHEN WE EAT THIS BREAD

(♩ = ca. 80)
 Capo 1: (D/F#) Eb/G

Priest (Gsus2) Absus2 (Asus4) (A) Bbsus4 Bb (D) Eb All (G/B) (D/A) Ab/C Eb/Bb

The mys - ter - y of faith. — When we eat this

(G) (Em) (G/B) (A) (F#m)
 Ab Fm Ab/C Bb Gm

Bread and drink this Cup we pro - claim your

(G/B) (Asus2) (A) (F#m7) (Em7) (G) (D)
 Ab/C Bbsus2 Bb Gm7 Fm7 Ab Eb

Death, O Lord, un - til you come a - gain.

Text © 2010, ICEL. All rights reserved. Used with permission.
 Music: *Mass of the Sacred Heart*; Timothy R. Smith, b. 1960, © 2007, 2010, Timothy R. Smith. Published by OCP. All rights reserved.

SAVE US, SAVIOR

(♩ = ca. 80)

Capo 1: (D/F#) Eb/G (Gsus2) Absus2 (Asus4) (A) Bbsus4 Bb (D) Eb (A/C#) Bb/D

Priest

The my - ter - of with. — Save us, Sav - ior

All

of the world, for by your Cross and Res - ur -

rec - tion — set us free.

Text © 2010, ICEL. All rights reserved. Used with permission.
 Music: *Mass of the Sacred Heart*; Timothy R. Smith, b. 1960, © 2007, 2010, Timothy R. Smith. Published by OCP. All rights reserved.

SAVING

DOXOLOGY AND AMEN

Capo 1: (D/F#) Eb/G Priest (Gsus2) Absus2 (Asus4) Bbsus4 (D/F#) Eb/G (Gsus2) Absus2 (Asus4) Bbsus4

Through him, and with him, and in him, O God, al - mighty Fa - ther,

(D/F#) Eb/G (Gsus2) Absus2 (Asus4) Bbsus4

in the unity of the Holy Spir - it, all glory and hon - or

(D/A) Eb/Bb (Em) Fm (D/F#) Eb/G (A7sus4) Bb7sus4 (D) Eb

is yours, for ev - er and ev - er.

(♩ = ca. 80)

(D) Eb (A/C#) Bb/D (Em) Fm (Bm) Cm

All A - men. A - men.

* Optional repeat				Final			
(G) Ab	(D/A) Eb/Bb	(G/B) Ab/C	(A/C#) Bb/D	(G/B) Ab/C	(A/C#) Bb/D	(G/B) Ab/C	(G) Ab
				rit.			
A - men.				men.			

* Optional Intro if Doxology is not sung.

Text: Doxology © 2010, ICEL. All rights reserved. Used with permission.
 Music: Mass of the Sacred Heart; Timothy R. Smith, b. 1960, © 2014, Timothy R. Smith. Published by OCP. All rights reserved.

LAMB OF GOD

(♩ = ca. 78)

Capo 1: (D) Eb (G/B) Ab/C (G) Ab (D/F#) Eb/G (A) Bb (Bm) Cm (Em) Fm (D/F#) Eb/G

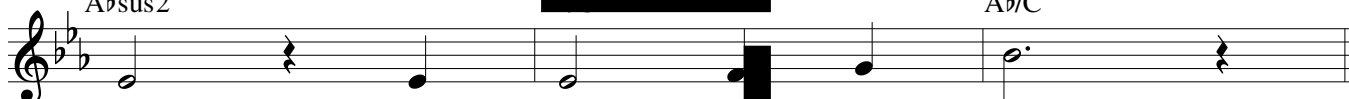


Lamb of God, you take a - way the sins of the

(Gsus2) Absus2

(D/F#) Ab/C

(G/B) Ab/C



world, have mer - cy on us.

(Em7) Fm7

(D/F#) Eb/G

(G) Ab

(A) Bb

(Bm) Cm

(Em) Fm

(D/F#) Eb/G



Lamb of God, you take a - way the sins of the

(Gsus2) Absus2

(D/F#) Ab/C

(G/B) Ab/C



world, have mer - cy on us.

(D) Eb

(G/B) Ab/C

(G) Ab

(D/F#) Eb/G

(A) Bb

(Bm) Cm

(Em) Fm

(D/F#) Eb/G



Lamb of God, you take a - way the sins of the

(Gsus2) Absus2

(D/F#) Eb/G

(G) Ab

(D/A) Eb/Bb
rit.

(D) Eb



world, grant us _____ peace. _____

Music: *Mass of the Sacred Heart*; Timothy R. Smith, b. 1960, © 2007, 2010, Timothy R. Smith. Published by OCP. All rights reserved.