

Transfigure Us, O Lord

164

CELLO

Bob Hurd

Arr. by Rick Modlin

INTRO (♩ = ca. 70)

REFRAIN

VERSE 1

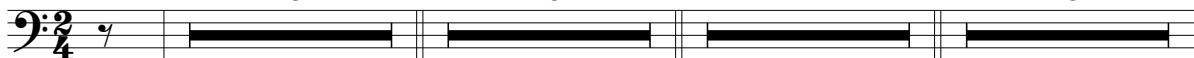
REFRAIN

13

13

14

13



VERSE 2

REFRAIN

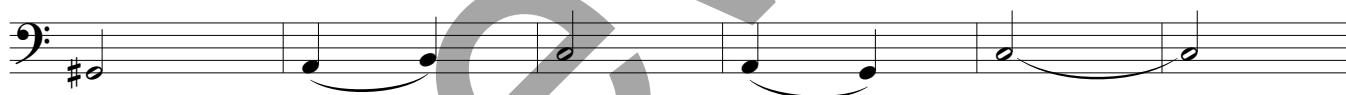
VERSE 3

14

13



REFRAIN



VERSE 4



REFRAIN



INTERLUDE

Musical notation for the Interlude section, featuring a cello staff with a key signature of one sharp (F#) and a series of eighth and sixteenth notes with slurs.

FINAL REFRAIN

Musical notation for the first line of the Final Refrain, featuring a cello staff with a key signature of one sharp (F#) and a series of quarter and eighth notes.

Musical notation for the second line of the Final Refrain, including tempo markings *rit.*, *a tempo*, and *rit.* above the staff.

Preview